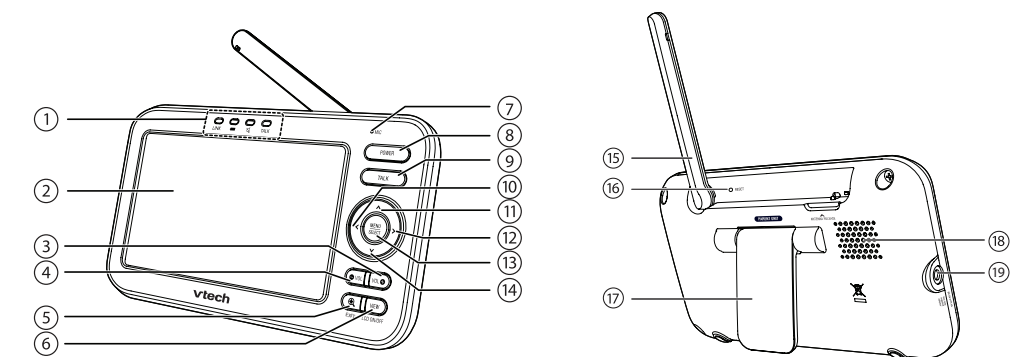


PARENT UNIT OVERVIEW



- LED lights**
 - Indicate the different statuses of the parent unit. For details, refer to **Parent Unit Lights**.
- LCD display**
- VOL**
- VOL**
- Zoom**
 - Press to zoom in or out.
- VIEW / LCD ON/OFF**
- Microphone**
- POWER**
- TALK**
 - Press and hold to talk to the selected baby unit.
- While in a menu, press to return to the main menu or idle screen.
 - While viewing zoomed image, press and hold to move the zoomed image leftward.
- While in a menu, press to scroll up.
 - While viewing zoomed image, press and hold to move the zoomed image upward.
- While in a menu, press to choose an item.
 - While viewing zoomed image, press and hold to move the zoomed image rightward.
- MENU/SELECT**
 - Press to enter the menu.
 - While in a menu, press to choose an item, or save a setting.
- Antenna**
- RESET**
 - Force reboot the parent unit.
- Stand**
- Speaker**
- Power jack**

PARENT UNIT ICONS

Main menu	Sub-menu
Brightness	
Adjust the parent unit's LCD brightness.	
Camera settings	
Baby unit speaker volume	
Adjust the baby unit's speaker volume.	
Monitoring mode (*For LM808-2W only)	
<ul style="list-style-type: none"> Single mode Split mode Patrol mode 	
Lullaby	
Play/Stop lullaby	
<ul style="list-style-type: none"> 1 2 3 4 	
Select one of the soothing sounds, or white noise.	
<ul style="list-style-type: none"> 1 2 3 4 5 	
Select one of the five melodies.	
<ul style="list-style-type: none"> 60min 45min 30min 15min 	
Set timer to stop playing the selected melody or soothing sound.	

Main menu	Sub-menu
Alert tones	
Set the parent unit to beep when the battery is low.	
Set the parent unit to beep when the link between the parent unit and the baby unit is lost.	
Set the confirmation tone on or off when selecting an option in the menus.	
Set the parent unit to beep when the baby unit detects sounds while in Split mode . (*For LM808-2W only)	
Temperature	
ON / OFF	
Set the parent unit to beep whenever the room temperature detected by the baby unit falls outside of the set temperature range.	
Set the minimum temperature.	
Set the maximum temperature.	
Set temperature display in Fahrenheit (°F) or Celsius (°C).	

Main menu	Sub-menu
Sound activation - screen and audio	
ON / OFF	
Turn on/off sound activation	
<ul style="list-style-type: none"> When it is on, and the baby unit detects no sound, the parent unit screen remains off to save power. Once a sound is detected, the parent unit screen and speaker turn on automatically, and you can see and hear your baby. The parent unit will then turn off again after 50 seconds of no sound detection. 	
NOTE	
When the parent unit screen is off and it receives alerts, for example, link lost between parent unit and baby unit, or battery is low, the parent unit screen and speaker will turn on for 10 seconds.	
VOX (Voice Activated Alert) Sensitivity	
<ul style="list-style-type: none"> You can set VOX sensitivity levels to activate parent unit screen and sound when baby unit detects sounds that exceed certain levels. See Sound sensitivity and sound activation section. 	

Status icons

	Connection status
	Strong signal strength.
	Moderate signal strength.
	Low signal strength.
	Weak signal strength.
	Split mode (*For LM808-2W only)
	Patrol mode (*For LM808-2W only)
	Current view status
	The baby unit number that is being viewed when in: <ul style="list-style-type: none"> Single CAM mode. Patrol mode (*For LM808-2W only) Split mode (*For LM808-2W only)
	Night vision - On
	Zoom - On
	Lullaby - On
	Real-time temperature
	Real-time temperature detected by the baby unit in Fahrenheit (°F) or Celsius (°C) (e.g. 57°F or 14°C).
	Temperature alert tone - On
	Mute alert
	Displays when the parent unit speaker volume is set to off.
	Displays when the parent unit is talking to the baby unit.
	9-level sound indicator
	indicates low sound level detected by the baby unit.
	indicates moderate sound level detected by the baby unit.
	indicates high sound level detected by the baby unit.

Status icons

	Battery status
	animates when the battery is charging.
	battery is fully charged.
	battery is low and needs charging.
	Warning icons and messages
	No link between units
	Battery low at Parent Unit
	Sound detected when in Split view (*For LM808-2W only)
	Temperature too high at Baby Unit
	Temperature too low at Baby unit
	Parent Unit Lights
	LINK
	On when the parent unit is linked to the baby unit.
	Flashes when the link to the baby unit is lost.
	On when the parent unit is connected to AC power, or the battery is charging.
	Flashes when the parent unit battery is low and needs charging.
	Off when the parent unit is disconnected from AC power.
	On when the parent unit speaker volume is set to off; or
	When the parent unit is talking to the baby unit.
	TALK
	On when the parent unit is talking to the baby unit.

FOR LM808-2W ONLY

Status check - Two baby units

If you are viewing baby unit 1, the **POWER** LED light of baby unit 1 turns on. As baby unit 2 is not being viewed, its **POWER** LED light flashes.

NOTE

- If you power on only one baby unit, you may see the parent unit displaying and then and the **LINK** LED light flashing.
- Press **VIEW** in **Single CAM** or **Patrol** mode to switch to the baby unit you have powered on.

Change different views - Single CAM

In **Single CAM** or **Patrol** mode, press **VIEW** to switch between the image of baby units 1 and 2.

Change different views - Patrol

Select **Patrol** as your monitoring mode to alternately view the image from baby units 1 and 2 every 10 seconds.

Change different views - Split

Select **Split** as your monitoring mode to view the images from both baby units at once.

NIGHT VISION

The baby unit has infrared LEDs that allow you to see your baby clearly at night or in a dark room. When the baby unit being viewed detects low light levels, the infrared LEDs are switched on automatically. The images from the baby unit are in black and white, and appears on the screen.

NOTES

- It is normal to see a short white glare on your parent unit screen as the baby unit adapts to the dark environment.
- When the infrared LEDs are on, the images are in black and white.

Tip

- Depending on the surroundings and other interfering factors, like lighting, objects, colours and backgrounds, the video quality may vary. Adjust the baby unit angle or place the baby unit at a higher level to prevent glare and a blurry display.

MOUNT THE BABY UNIT ON DRY WALL (OPTIONAL)

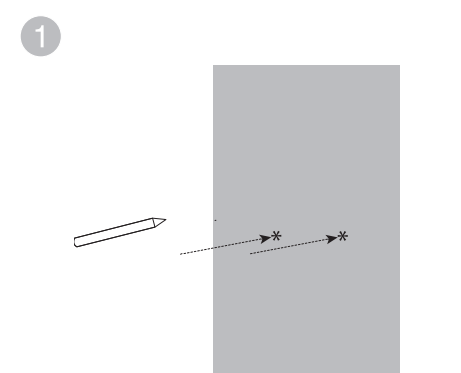
Items to purchase

You will need to purchase the following items separately to mount your baby unit:

- 2 screws
- 2 wall plugs

NOTE

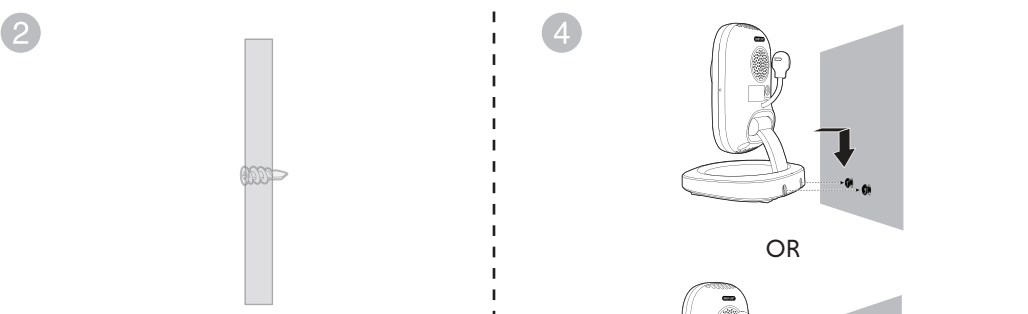
- The types of screws and wall plugs you need depend on the composition of the wall.



NOTE

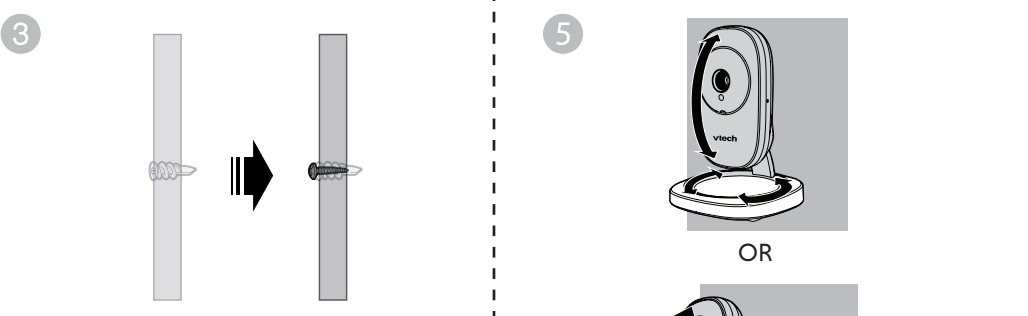
- Check for reception strength and camera angle before drilling the holes.

Use a pencil to mark two holes in parallel. Make sure they are the same distance apart as the wall mount holes on the baby unit.



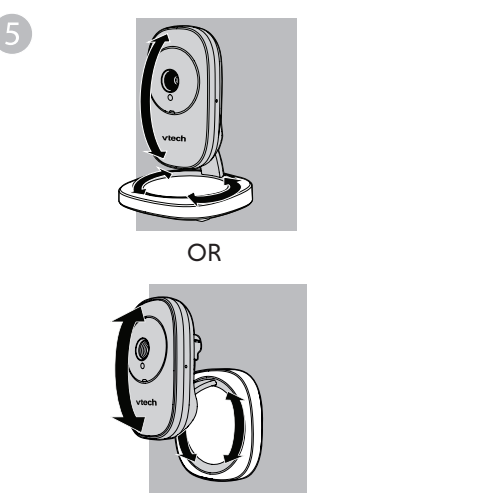
Drill two holes in the wall. If you drill the holes into a stud, go to step 3.

-OR-
If you drill the holes into an object other than a stud, insert the wall plugs into the holes. Tap gently on the ends with a hammer until the wall plugs are flush with the wall.



Insert the screws into the holes and tighten the screws until only 6mm of the screws are exposed.

Depending on your preference, choose the upright or lateral orientation to mount your unit. Align the wall mount holes at the bottom or at the rear side of the baby unit with the screws on the wall. Slide the baby unit down until it locks into place.



Tilt or rotate to adjust camera angle.

FREQUENTLY ASKED QUESTIONS

Below are the questions most frequently asked about the baby monitor.

Why does the baby monitor not respond normally?	Try the following (in the order listed) for common cure: 1. Disconnect the power to the baby unit and the parent unit. 2. Remove the batteries in the parent unit. Then, install the batteries again. 3. Wait a few seconds before connecting power back to the baby unit and the parent unit. 4. Turn on the baby unit and the parent unit. 5. Wait for the parent unit to synchronize with the baby unit. Allow up to one minute for this to take place.
Why doesn't the baby unit and parent unit power-on light illuminate when the units are switched on?	Perhaps the parent unit is not connected to the power. Insert the appliance plug into the parent unit and insert the adaptor in a wall socket. Then, press and hold POWER to switch on the parent unit and to establish connection with the baby unit. Perhaps the baby unit is not connected to the power. Insert the appliance plug into the baby unit and insert the adaptor in a wall socket. Then, slide the ON/OFF switch to ON to switch on the baby unit and to establish connection with the parent unit.
Why doesn't my parent unit charge while connected to AC power?	Check that the power jack is firmly inserted into the parent unit socket and the adaptor is fully inserted in the wall socket. Make sure your power is not controlled by an electronic wall switch.
Why is my screen in black and white?	The screen is in black and white during night-time or in a dark room when the night vision feature is activated. This is normal.
Why do I get glare or blurry display on my screen when viewing my baby at night?	During night-time or in a dark room, the surroundings and other interfering factors, like lighting, objects, colours and backgrounds may affect the image quality on your parent unit screen. Adjust the baby unit angle or place the baby unit at a higher level to prevent glare and a blurry display.
Why does the baby monitor produce feedback?	The parent unit and baby unit may be too close to each other. • Move the parent unit away from the baby unit until the noise stops; OR • Turn down the volume of your parent unit.
Why does the parent unit beep?	The baby unit may be out of range. Move the parent unit closer to the baby unit (but not less than 1 metre). The parent unit may not have enough charge for the parent unit to perform normally. Charge the battery in the parent unit until battery icon becomes solid. The temperature of your baby's room may be too high or too low.
Why does the parent unit react too quickly to other sounds?	The baby unit also picks up other sounds than those of your baby. Adjust the VOX sensitivity level to a lower level or lower the parent unit speaker volume.
Why don't I hear a sound/ Why can't I hear my baby cry?	The parent unit speaker volume may be too low. Press VOX to increase the volume. You may have set a low VOX sensitivity level. See Adjust the sound sensitivity of the baby unit to set to a higher level.
Why can't I establish a connection? Why is the connection lost every now and then? Why are there sound interruptions?	The baby unit may be out of range. Move the parent unit closer to the baby unit (but not less than 1 metre). Other electronic and wireless products may cause interference with your baby monitor. Try installing your baby monitor as far away from these devices as possible. If you power on only one baby unit, your parent unit may display and the LINK LED light flashes. Press VIEW to switch to the baby unit you have powered on.

GENERAL PRODUCT CARE

To keep this product working well and looking good, follow these guidelines:

- Avoid placing it near heating appliances and devices that generate electrical noise (for example, motors or fluorescent lamps).
- DO NOT expose it to direct sunlight or moisture.
- Avoid dropping the product or treating it roughly.
- Clean with a soft damp cloth.
- DO NOT immerse the parent unit and the baby unit in water and do not clean them under running water.
- DO NOT use cleaning spray or liquid cleaners.
- Make sure the baby unit and parent unit are dry before you connect them to the mains again.

CUSTOMER SERVICE AND PRODUCT WARRANTY

PRODUCT REGISTRATION

Visit www.vtech.co.uk/clubvtech/login to register your VTECH product

By joining the VTECH Club you can also enter competitions, find out about news and events, seek expert advice for parents and let your kids play fun learning games and activities.

PRODUCT WARRANTY

Thank you for choosing this quality product from VTECH.

ONE YEAR WARRANTY

- The product detailed above is covered by a one year warranty from the date of purchase, against any defects in materials or workmanship.
- The product may be returned to the place of purchase. Alternatively the product can be returned to VTECH Electronics Europe Plc (see address below), with proof of purchase, without proof of purchase no replacement will be provided.
- VTECH Electronics Europe Plc will examine the product and if it is found to be defective due to faulty materials or workmanship, will replace the product at their discretion.
- If the product covered by this warranty is damaged due to misuse, modification or unauthorized repair, or because of faulty batteries, battery discharge or incorrect electrical connections, then this warranty becomes void.
- This warranty is personal to the original purchaser and is not transferable.
- Breakages to the LCD screen are not covered by the warranty.
- Products returned to VTECH Electronics Europe Plc, should be sent to the address shown below and packed carefully to avoid damage in transit. Please do not include batteries or adaptors. Please include details of the fault together with your name and address, contact phone number and/or email address.
- To keep an online record of your warranty, please register your product online at www.vtech.co.uk/clubvtech

VTECH Electronics Europe Plc, c/o XPO Logistics, Warehouse 350, Cat & Fiddle Lane, West Hallam, DE7 6HE

THIS WARRANTY IS OFFERED AS AN EXTRA BENEFIT AND DOES NOT AFFECT CONSUMERS' STATUTORY RIGHTS.

This warranty is valid for the UK and Ireland only. For products purchased outside the UK and Ireland, please contact your local distributor or place of purchase.

STORAGE

If you are not going to use the baby monitor for some time, store the parent unit, the baby unit and the adaptors in a cool and dry place.

Credits:
The Background Noise sound file was created by Caroline Ford, and is used under the Creative Commons license.
The Stream Noise sound file was created by Caroline Ford, and is used under the Creative Commons license.
The Crickets At Night sound file was created by Mike Koenig, and is used under the Creative Commons license.
The Heart Beat sound file was created by Zarabadeu, and is used under the Creative Commons license.

DISPOSAL OF BATTERIES AND PRODUCT

- The crossed-out whee bin symbols on products and batteries, or on their respective packaging, indicates they must not be disposed of in domestic waste as they contain substances that can be damaging to the environment and human health.
- The chemical symbols Hg, Cd or Pb, where marked, indicate that the battery contains more than the specified value of mercury (Hg), cadmium (Cd) or lead (Pb) set out in Battery Directive (2006/66/EC).
- The solid bar indicates that the product was placed on the market after 13th August, 2005.
- Help protect the environment by disposing of your product or batteries responsibly.

DECLARATION OF CONFORMITY

This product is intended for use within UK.
This equipment complies with the essential requirements to EU's Radio Equipment Directive (2014/53/EU) and the UK's Radio Regulations 2017 on radio systems and telecommunication equipment.
VTECH Telecommunications Ltd, hereby declares that this Video Monitor LM808-2W complies with the essential requirements and other relevant provisions of EU's Radio Equipment Directive (2014/53/EU) and UK's Radio Equipment Regulations 2017.
The Declaration of Conformity for the LM808-2W is available from www.vtechbabycare.com.

Manufacturer: VTECH Telecommunications Ltd,
23/F., Tai Ping Industrial Centre, Block 1, 57 Ting kok Road, Tai Po, Hong Kong.
Importer: VTECH Electronics Europe Plc,
Napier Court, Abingdon Science Park, Abingdon, Oxon, OX14 3YT, U.K.

TECHNICAL SPECIFICATIONS

Frequency control	Crystal controlled PLL synthesizer
Transmit frequency	Baby unit: 2405 - 2475 MHz Parent unit: 2405 - 2475 MHz Maximum power used by the transmitter: 0.1W (100mW)
Channels	32
LCD	5" Colour LCD (WQVGA 480x272 pixel)
Nominal effective range	Actual operating range may vary according to environmental conditions at the time of use
Power requirements	Parent unit: 3.6V Ni-MH battery Baby unit power adaptor: Output: 5V DC @ 1A Parent unit power adaptor: Output: 5V DC @ 1A