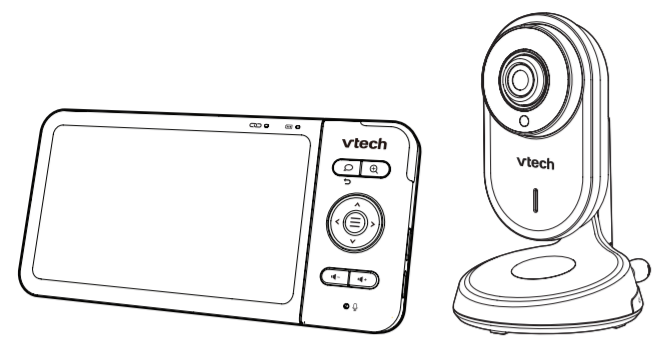


VM818HD

Full Color  
HD Video Monitor



**vtech**  
Quick start guide



All rights reserved. 04/22 VM818HD, UK, OSO, VLT  
© 2022 Vtech Telecommunications Ltd.  
Specifications are subject to change without notice.

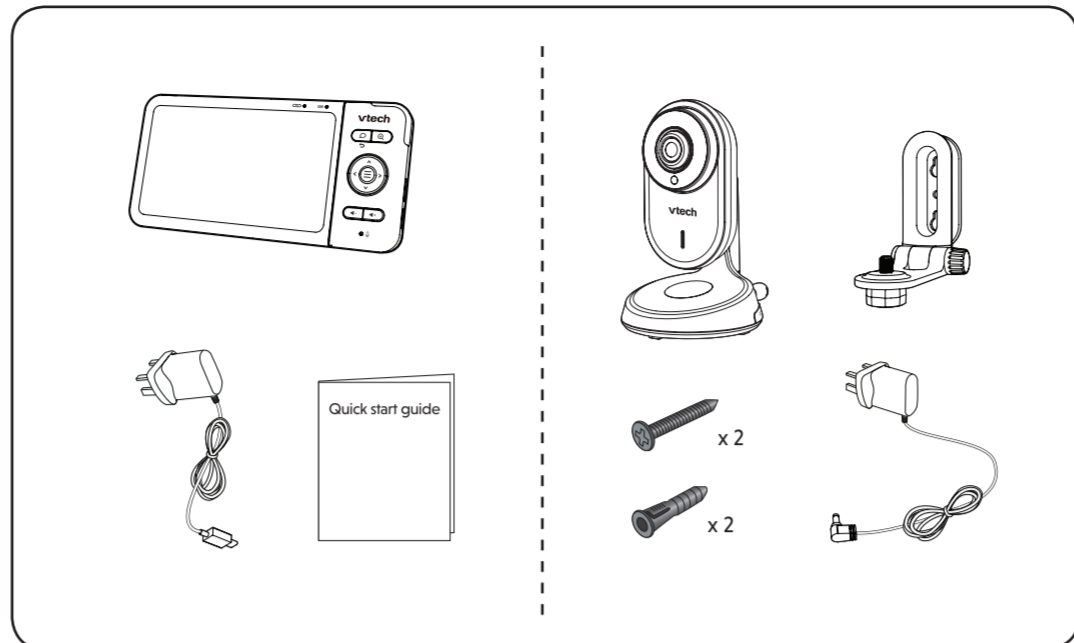
|                        |  |
|------------------------|--|
| Frequency control      | Crystal controlled PLL synthesizer   |
| Transmit frequency     | Baby unit: 2406 - 2475 MHz<br>Parent unit: 2406 - 2475 MHz   |
| Channels               | 24   |
| LCD                    | 5" Color LCD (IPS 1280x720 pixels)   |
| Normal effective range | Actual operating range may vary according to environmental conditions at the time of use.          |
| Power requirements     | Baby unit power adaptor:<br>Output: 5V DC @ 1A<br>Parent unit power adaptor:<br>Output: 5V DC @ 1A |

**TECHNICAL SPECIFICATIONS**

**IMPORTANT SAFETY INSTRUCTIONS**

- The applied nameplate is located at the bottom of the baby unit's base.
- When using your equipment, basic safety precautions should always be followed to reduce the risk of fire, electric shock and injury, including the following:
- Follow all warnings and instructions marked on the product.
  - Adult setup is required.
  - CAUTION:** Do not install the baby unit at a height above 2 metres.
  - This product is intended as an aid. It is not a substitute for responsible and proper adult supervision and should not be used as such.
  - This product is not intended for use as a medical monitor. Do not use this product near water. For example, do not use it next to a bath tub, wash bowl, kitchen sink, laundry tub or swimming pool, or in a wet basement or shower.
  - CAUTION:** Use only the battery provided. There may be a risk of explosion if a wrong type of battery is used for the parent unit. The battery cannot be subjected to high or low extreme temperature and low air pressure at high altitude during use, storage or transportation. Disposal of battery into fire or a hot oven, or mechanically crushing or cutting of the battery can result in an explosion. Leaving the battery in an extremely high temperature surrounding environment can result in an explosion or the leakage of flammable liquid of gas. Battery subjected to extremely low air pressure may result in an explosion or the leakage of flammable liquid or gas. Dispose of used battery according to the information in The RBRC seal.
  - Use only the adapters included with this product. Incorrect adapter polarity or voltage can seriously damage the product.
- Power adapter information:**  
Parent unit output: 5V DC 1A  
Vtech Telecommunications Ltd.  
Model: VT05EUK05100 (UK)  
Baby unit output: 5V DC 1A  
Vtech Telecommunications Ltd.  
Model: VT05EUK05100 (UK)
- Rechargeable battery information:**  
Li-ion battery 3.8V, 2100mAh, 7.98Wh;  
Zhongshan Tianmao Battery Co., Ltd.  
Model Number: BP1763
- The power adapters are intended to be correctly oriented in a vertical or typical household position. The prongs are not designed to hold the plug in place if it is plugged into a ceiling, under-the-table or cabinet outlet.
  - For pluggable equipment, the socket-outlet shall be installed near the equipment and shall be easily accessible.
  - Unplug this product from the wall outlet before cleaning. Do not use liquid or aerosol cleaners. Use a damp cloth for cleaning.
  - Do not cut off the power adapters to replace them with other plugs, as this causes a hazardous situation.
  - Do not allow anything to rest on the power cords. Do not install this product where the cords may be walked on or crimped.
  - This product should be operated only from the type of power source indicated on the marking label. If you are not sure of the type of power supply in your home, consult your dealer or local power company.
  - Do not overload wall outlets or use an extension cord.
  - Do not place this product on an unstable table, shelf, stand or other unstable surfaces.
  - This product should not be placed in any area where proper ventilation is not provided. Slots and openings in the back or bottom of this product are provided for ventilation. To protect them from overheating, these openings must not be blocked by placing the product on a soft surface such as a bed, sofa or rug. This product should never be placed near or over a radiator or heat register.
  - Never push objects of any kind into this product through the slots because they may touch dangerous voltage points or create a short circuit.
- Never spill liquid of any kind on the product.
- To reduce the risk of electric shock, do not disassemble this product, but take it to an authorized service facility. Opening or removing parts of the product other than specified access doors may expose you to dangerous voltages or other risks. Incorrect reassembling can cause electric shock when the product is subsequently used.
  - You should test the sound reception every time you turn on the units or move one of the components.
  - Periodically examine all components for damage.
  - There is a very low risk of privacy loss when using certain electronic devices, such as baby monitors, cordless telephones, etc. To protect your privacy, make sure the product has never been used before purchase, reset the baby monitor periodically by powering off and then powering on the units, and power off the baby monitor if you will not use it for some time.
  - Children should be supervised to ensure that they do not play with the product.
  - The product is not intended for use by persons (including children) with reduced physical, sensory or mental capabilities, or lack of experience and knowledge, unless they have been given supervision or instruction concerning use of the appliance by a person responsible for their safety.
- SAVE THESE INSTRUCTIONS**
- Cautions**
- Use and store the product at a temperature between 0°C and 40°C.
  - Do not expose the product to extreme cold, heat or direct sunlight. Do not put the product close to a heating source.
  - Batteries should not be exposed to excessive heat such as bright sunshine or fire.
- Warning—Strangulation Hazard—**  
Children have STRANGLED in cords. Keep this cord out of the reach of children (more than 0.9m (3 feet away). Do not remove this tag.
- Never place the baby unit(s) inside the baby's cot or playpen. Never cover the baby unit(s) or parent unit with anything such as a towel or a blanket.**
- Other electronic products may cause interference with your baby monitor. Try installing your baby monitor as far away from these electronic devices as possible: wireless routers, radios, cellular telephones, intercoms, room monitors, televisions, personal computers, kitchen appliances and cordless telephones.**
- Precautions for users of implanted cardiac pacemakers**  
Cardiac pacemakers (applies only to digital cordless devices): Wireless Technology Research, LLC (WTR), an independent research entity, led a multidisciplinary evaluation of the interference between portable wireless devices and implanted cardiac pacemakers. Supported by the U.S. Food and Drug Administration, WTR recommends to physicians that:
- Pacemaker patients**
- Should keep wireless devices at least six inches from the pacemaker.
  - Should NOT place wireless devices directly over the pacemaker, such as in a breast pocket, when it is turned ON.
- WTR's evaluation did not identify any risk to bystanders with pacemakers from other persons using wireless devices.
- Electromagnetic fields (EMF)**  
This Vtech product complies with all standards regarding electromagnetic fields (EMF). If handled properly and according to the instructions in this user's manual, the product is safe to be used based on scientific evidence available today.

**WHAT'S IN THE BOX**



**1 CONNECT THE BABY MONITOR**

**NOTES**

- The rechargeable battery in the parent unit is built-in.
- Use only the power adapters supplied with this product.
- Make sure the parent unit and the baby unit are not connected to the switch controlled electrical outlets.
- Connect the power adapters in a vertical or floor mount position only. The adapters' prongs are not designed to hold the weight of the parent unit and the baby unit, so do not connect them to any ceiling, under-the-table, or cabinet outlets. Otherwise, the adapters may not properly connect to the mains.
- Make sure the parent unit, the baby unit and the power adapter cords are out of reach of children.

**CAUTION**

- Position the baby unit's temperature sensor horizontally for its optimal usage. Do not bend it upward.

**Raise the parent unit antenna for better reception**

**1 CONNECT THE BABY MONITOR (CONT'D)**

**Charge the parent unit battery before use**

When you have connected and turned on the parent unit, the battery will charge automatically.

**NOTES**

- Before using the baby monitor for the first time, charge the parent unit battery for 12 hours. When the parent unit battery is fully charged, the battery icon becomes solid.
- It takes longer to charge the battery when the parent unit is turned on. To shorten the charging time, turn the parent unit off while charging.
- The standby time varies depending on the parent unit sensitivity level you set, your actual use and the age of the battery.

The battery icon indicates the battery status (see the following table).

| BATTERY INDICATORS                       | BATTERY STATUS   | ACTION   |
|--|--|--|
| The screen displays  The  light flashes. | The battery has very little power and may only be used for a short time. | Charge without interruption (about 30 minutes).                      |
| The battery icon becomes solid .         | The battery is fully charged.  | To keep the battery charged, connect it to AC power when not in use. |

**2 POWER ON OR OFF THE BABY MONITOR**

- Slide the **ON/OFF** switch leftward to power on your baby unit.
- After the parent unit is fully charged, **press and hold** until the welcoming screen appears.

**3 POSITIONING THE BABY MONITOR**

- Position the baby unit at least 1 metre away from other electronic devices.
- Position the baby unit at least 1 metre away from the parent unit.
- Position the baby unit at least 1 metre away from the parent unit.
- STATUS CHECK**  
Once you power on both your baby unit and parent unit, your parent unit displays image from the baby unit, and the LED light turns on.  
The green LED light on the baby unit also turns on.

**CAUTION**

- The default volume of your parent unit is level 3, and the maximum volume is level 5. If you experience high-pitched screaming noise from your baby monitor while positioning:
  - Make sure your baby unit and parent unit are more than 1 metre apart, OR
  - Lower the volume of your parent unit.

**BASIC OPERATION - PARENT UNIT**

**Adjust speaker volume**  
Press to adjust your parent unit speaker volume. It determines the volume of sound transmitted to you from the baby unit.

**Zoom**  
Press to zoom in or out.

**Use the menu**  
Press to enter the menu, choose a menu item, or save a setting. You can use the parent unit for advanced settings or operations, such as to play or stop the baby unit lullaby, or to adjust the baby unit sound sensitivity.

While in the menu:

- Press to scroll among the menu options.
- Press to select an item, or to save a setting.
- Press to return to the live video.
- Press to go to the **Help & Info** page.

**Talk to your baby via the baby unit**

- Press and hold key.
- When the icon displays on screen, speak to your parent unit. Your voice is transmitted to the baby unit.
- When finish talking, release the key and hear your baby again.

**Turn on/off the parent unit screen**  
You can turn on or off the parent unit screen without powering off the parent unit. You can still hear sounds from the baby unit.

- Press on the parent unit to turn off the screen.
- Press any key on the parent unit to turn the screen on again.

**OVERVIEW - PARENT UNIT**

- Link LED light
- Battery LED light
- 3-level sound indicator light
- Talk / Exit
- Zoom
- Arrow keys
- Menu/Select
- Volume up/down
- Microphone
- Speaker
- POWER / LCD OFF
- Power jack
- RESET
- Antenna
- Stand

**13 Threaded socket for wall mounting**

**14 Pair button**

**OVERVIEW - BABY UNIT**

- Infrared LEDs
- Camera lens
- Light sensor
- Microphone
- Night light
- Night light ON/OFF key
- LED indicator
- Power ON/OFF switch
- Speaker
- Antenna
- Power jack
- Temperature sensor
- Threaded socket for wall mounting
- Pair button

**CAUTION**

- Do not bend the temperature sensor upward.

**PARENT UNIT ICONS**

**Main menu icons**

**Main menu**

**Melodies and soothing sounds**

**Melodies and Soothing Sounds**

- Select play all melodies, or play one of the five melodies and four soothing sounds.

**Timer**

- You can also set the timer to stop playing after 15, 30 or 60 minutes, or playing non-stop.

**Alerts - Sound, motion and temperature**

**Sound**

- Select sound **Sensitivity** level.
- Turn on/off **Sound Detection Alert**.
- Turn on/off **Auto Wake Up** function. (See **Sound Detection and Auto Wake Up** section)

**Motion**

- Turn on/off **Motion Alert**.
- Select motion **Sensitivity** level. (See **Motion Detection** section)

**Temperature**

- Set the parent unit to beep whenever the room temperature detected by the baby unit falls outside of the set temperature range.
- Select **Minimum** temperature for alert range.
- Select **Maximum** temperature for alert range.
- Select temperature **Format**. Set temperature display in Fahrenheit (°F) or Celsius (°C).

**Parent unit settings**

- Adjust parent unit screen **Brightness**.
- Turn on/off **Dim Mode**.

**Baby unit settings**

- Turn on/off **Night Light**.
- Turn on/off baby unit's **Status LED**.
- Adjust baby unit's speaker **Volume**.

**General settings**

- Turn on/off **Low Battery Alert Tone**. Set the parent unit to beep when the battery is low.
- Turn on/off **No Link Alert Tone**. Set the parent unit to beep when the link between the parent unit and the baby unit is lost.
- Add Baby Unit**
- Remove Baby Unit**

**Status icons**

- Current view status
- Night vision feature is activated automatically.
- Motion alert is turned on.
- Sound detection alert is turned on.
- Melodies or soothing sounds are turned on.
- Night light is turned on.
- Parent unit speaker is muted.
- Temperature alert is turned on.
- Real-time temperature indicator
- Battery status indicator

**Alert icons**

- Displays when parent unit's battery is low and needs charging.
- Displays when motion is detected at a baby unit.
- Displays when sound is detected at a baby unit.
- Baby unit detects temperature exceeds the set maximum.
- Baby unit detects temperature is lower than the set minimum.

## SOUND DETECTION AND AUTO WAKE UP

### Adjust sound detection sensitivity

When you turn on **Sound Detection Alert**, you can adjust the baby unit's **Sound Sensitivity** to detect sounds and turn on the parent unit when its screen is switched off or dimmed.

When the baby unit detects sounds that exceed certain levels, the parent unit screen will automatically turn on and the baby unit will transmit the detected sounds to the parent unit. You will then be able to see and hear your baby.

If you have turned on **Sound Detection Alert**, the parent unit also beeps when the baby unit detects sounds.

| SOUND SENSITIVITY LEVEL | Level 3 (Highest)  | Level 2 (Medium)   | Level 1 (Lowest)  |
|-------------------------|--|--|---|
|                         |  |  |   |
| DESCRIPTION             | The parent unit screen and speaker turn on for very small sounds, including background noises from your baby's room. | The parent unit screen and speaker turn on for loud babbling and louder sounds from your baby. The parent unit remains quiet when your baby makes soft sounds. | The parent unit screen and speaker turn on for loud crying or screeching sounds from your baby. The parent unit remains quiet when your baby makes soft sounds. |

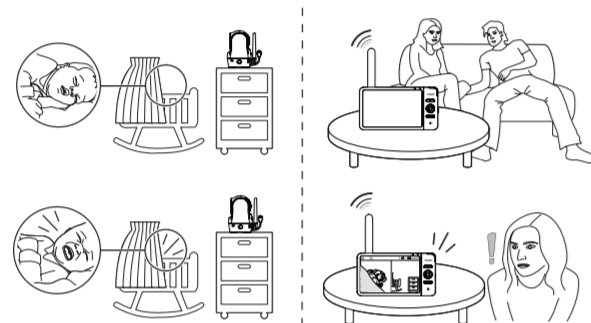
### Sound activated screen and audio - Auto Wake Up

The parent unit screen automatically stays off to save power when the baby unit detects no sound.

When **Auto Wake Up** is turned on, once the baby unit detects sounds that are louder than the chosen sound sensitivity level, the parent unit screen and speaker turn on automatically. The parent unit will then turn off again after 50 seconds of no sound detection.

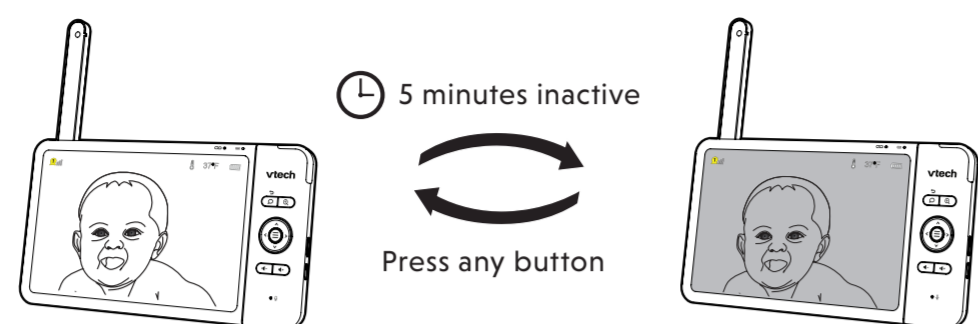
#### NOTES

- If you have muted the parent unit's speaker, only the parent unit screen will turn on when sound is detected.
- If you have turned on **Auto Wake Up** but turned off **Sound Detection Alert**, the parent unit will wake up when the baby unit detects sounds that are louder than the chosen sound sensitivity level.



## DIM MODE

The parent unit display will dim to conserve energy after 5 minutes of inactivity, in which there is neither key pressed nor alert received from the baby unit.



## MOTION DETECTION

### Adjust motion detection sensitivity

When you turn on **Motion Alert**, you can adjust the **Motion Sensitivity** to detect motions and turn on the parent unit when its screen is switched off or dimmed.

When the baby unit's camera detects motions that exceed certain levels, the parent unit screen will turn on and the baby unit starts to transmit sounds to the parent unit. You will then be able to see and hear your baby.

If you have turned on **Motion Alert**, the parent unit also beeps when the baby unit detects motions.

| MOTION SENSITIVITY LEVEL | Level 3 (Highest)  | Level 2 (Medium)  | Level 1 (Lowest)  |
|--------------------------|--|---|---|
|                          |  |   |   |
| DESCRIPTION              | The parent unit screen and speaker turn on for small motions, such as yawning or stretching. | The parent unit screen and speaker turn on for normal daily motions, such as people walking around the house. | The parent unit screen and speaker turn on for large motions, such as children chasing or jumping around. |

## NIGHT VISION



The baby unit has infrared LEDs that allow you to see your baby clearly at night or in a dark room. When the baby unit being viewed detects low light levels, the infrared LEDs are switched on automatically. The images from the baby unit will be in black and white, and appears on the screen.

#### NOTES

- It is normal to see a short white glare on your parent unit screen as the baby unit is adapting to the dark environment.
- When the infrared LEDs are on, it is normal for the images to be in black and white.

#### TIP

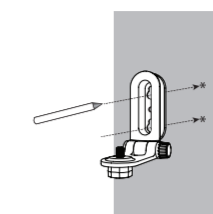
- Depending on the surroundings and other interfering factors, like lighting, objects, colors and backgrounds, the video quality may vary. Adjust the baby unit's angle or place the baby unit at a higher elevation to prevent glare and blurry displays.

## MOUNT THE BABY UNIT ON DRY WALL (OPTIONAL)

#### NOTES

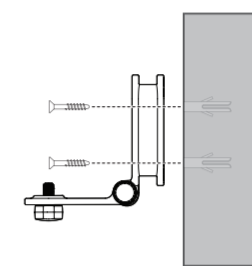
- Check for reception strength and baby unit's angle before drilling the holes.
- The types of screws and anchors you need depend on the composition of the wall. You may need to purchase the screws and anchors separately to mount your baby unit.

- Place the wall mount bracket on a wall and then use a pencil to mark the top and the bottom holes as shown. Remove the wall mount bracket and drill two holes in the wall (7/32 inch drill bit).



- If you drill the holes into a stud, go to step 3.
  - If you drill the holes into an object other than a stud, insert the wall anchors into the holes. Tap gently on the ends with a hammer until the wall anchors are flush with the wall.

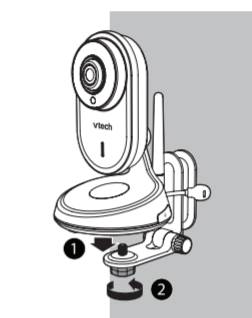
- Align the wall mount bracket and screws with the holes in the wall as shown. Tighten the screw in the middle hole first, so that the wall mount bracket position is fixed. You can tighten the other screw in the top hole.



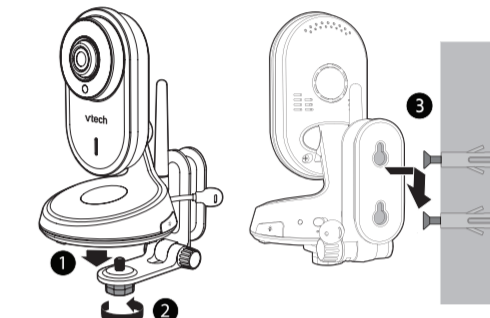
- Insert the screws into the holes and tighten the screws until only 1/4 inch of the screws are exposed.

OR

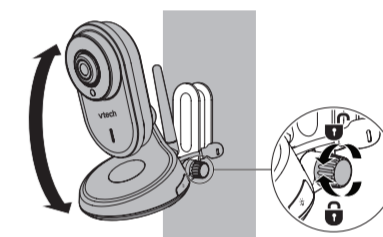
- Place the baby unit on the wall mount bracket. Tighten the screw into the threaded socket at the bottom to secure the baby unit.



- Place the baby unit on the wall mount bracket. Tighten the screw into the threaded socket at the bottom to secure the baby unit. Align the holes on the wall mount bracket with the screws on the wall, and slide the wall mount bracket down until it locks into place.



- You can maximize your baby unit's viewing angles by tilting the wall mount bracket. Hold the baby unit, and then rotate the knob in anticlockwise direction. This will loosen the joint of the wall mount bracket. Tilt your baby unit up or down to adjust to your preferred angle. Then, rotate the knob in clockwise direction to tighten the joint and secure the angle.



## FREQUENTLY ASKED QUESTIONS

Below are the questions most frequently asked about the baby monitor.

|   |   |
|---|---|
| Why does the baby monitor not respond normally?   | Try the following (in the order listed) for a common cure: <ol style="list-style-type: none"><li>Disconnect the power to the baby unit and the parent unit.</li><li>Wait a few seconds before connecting power back to the baby unit and the parent unit.</li><li>Turn on the baby unit and the parent unit.</li><li>Wait for the parent unit to synchronize with the baby unit. Allow up to one minute for this to take place.</li></ol>   |
| Why don't the lights of the baby unit and parent unit go on when I switch on the units?                               | Perhaps the parent unit's battery is depleted. Insert the appliance plug into the parent unit and put the adapter in a wall socket. Then, press  to switch on the parent unit. The parent unit will establish connection with the baby unit.<br>Perhaps the baby unit is not connected to the power. Insert the appliance plug into the baby unit and put the adapter in a wall socket. Then, slide the  to switch on the baby unit and to establish connection with the parent unit. |
| Why doesn't my parent unit charge while connected to AC power?  | Make sure the power is not controlled by a wall switch.   |
| Why is my screen in black and white?  | It is normal for the screen to be in black and white during night-time or in a dark room when the night vision feature is activated.  |
| Why do I get glare or blurry display on my screen when viewing my baby at night?                                      | During night-time or in a dark room, the surroundings and other interfering factors, like lighting, objects, colors and backgrounds may affect the image quality on your parent unit screen. Adjust the baby unit's angle or place the baby unit at a higher elevation to prevent glare and blurry displays.  |
| Why does the baby monitor produce a high-pitched noise?   | The parent unit and baby unit may be too close to each other. <ul style="list-style-type: none"><li>Move the parent unit away from the baby unit until the noise stops; OR</li><li>Turn down the volume of your parent unit.</li></ul>  |
| Why does the parent unit beep?  | The baby unit may be out of range. Move the parent unit closer to the baby unit (but not less than 0.9 metres).<br>The parent unit may not have enough battery for the parent unit to perform normally. Charge the parent unit until the battery icon becomes solid .<br>The temperature of your baby's room may be too high or too low.  |
| Why don't I hear a sound/ Why can't I hear my baby cry?   | The parent unit speaker volume may be too low. Press  to increase the volume, or use the parent unit menu to change sound sensitivity to the highest level.   |
| Why can't I establish a connection? Why is the connection lost every now and then? Why are there sound interruptions? | The baby unit may be out of range. Move the parent unit closer to the baby unit (but not less than 0.9 metres).<br>Other electronic and wireless products may cause interference with your baby monitor. Try installing your baby monitor as far away from these devices as possible.   |

## CUSTOMER SERVICE AND PRODUCT WARRANTY



### PRODUCT REGISTRATION

Visit [www.vtech.co.uk/clubvtech/login](http://www.vtech.co.uk/clubvtech/login) to register your VTech product

By joining the VTech Club you can also enter competitions, find out about news and events, seek expert advice for parents and let your kids play fun learning games and activities.



### PRODUCT WARRANTY

Thank you for choosing this quality product from VTech.

- The product detailed above is covered by a one year warranty from the date of purchase, against any defects in materials or workmanship.
- The product may be returned to the place of purchase. Alternatively the product can be returned to VTech Electronics Europe Plc (see address below), with proof of purchase, without proof of purchase no replacement will be provided.
- VTech Electronics Europe Plc will examine the product and if it is found to be defective due to faulty materials or workmanship, will replace the product at their discretion.
- If the product covered by this warranty is damaged due to misuse, modification or unauthorized repair, or because of faulty batteries, battery discharge or incorrect electrical connections, then this warranty becomes void.
- This warranty is personal to the original purchaser and is not transferable.
- Breakages to the LCD screen are not covered by the warranty.
- Returns to VTech Electronics Europe Plc should include a cheque or postal order for £1.50 towards the cost of return postage and packaging.
- Products returned to VTech Electronics Europe Plc, should be addressed as follows and packed carefully to avoid damage in transit (Please do not include batteries or adaptor). Please include details of the fault together with your name and address.
- To keep an online record of your warranty, please register your product online at [www.vtech.co.uk/clubvtech](http://www.vtech.co.uk/clubvtech)

VTech Electronics Europe Plc, c/o XPO Logistics, Warehouse 350, Cat & Fiddle Lane, West Hallam, DE7 6HE  
THIS WARRANTY IS OFFERED AS AN EXTRA BENEFIT AND DOES NOT AFFECT CONSUMERS' STATUTORY RIGHTS.

This warranty is valid for the UK and Ireland only. For products purchased outside the UK and Ireland, please contact your local distributor or place of purchase.

#### IMPORTANT

Please retain this booklet with your sales receipt as proof of the date of purchase.

#### Customer Service

Please call our Consumer Services Department on 03306 780149 (from UK) or +44 3306 780149 (outside UK) and a service representative will be happy to help you.

## DISPOSAL OF BATTERIES AND PRODUCT



The crossed-out wheellie bin symbols on products and batteries, or on their respective packaging, indicates they must not be disposed of in domestic waste as they contain substances that can be damaging to the environment and human health.

The chemical symbols Hg, Cd or Pb, where marked, indicate that the battery contains more than the specified value of mercury (Hg), cadmium (Cd) or lead (Pb) set out in Battery Directive (2006/66/EC).

The solid bar indicates that the product was placed on the market after 13th August, 2005.

Help protect the environment by disposing of your product or batteries responsibly.

## DECLARATION OF CONFORMITY

This product is intended for use within Europe and UK. This equipment complies with the essential requirements to EU's Radio Equipment Directive (2014/53/EU) and the UK's Radio Regulations 2017 on radio systems and telecommunication equipment. VTech Telecommunications Ltd. hereby declares that this Video Baby Monitor VM818HD is in compliance with the essential requirements and other relevant provisions of EU's Radio Equipment Directive (2014/53/EU) and UK's Radio Equipment Regulations 2017. The Declaration of Conformity for the VM818HD is available from <http://www.vtech.com/rte-directive>.



Manufacturer: VTech Telecommunications Ltd.  
23/F., Tai Ping Industrial Centre, Block 1, 57 Ting Kok Road, Tai Po, Hong Kong.  
Importer: VTech Electronics Europe Plc.  
Napier Court, Abingdon Science Park, Abingdon, Oxon, OX14 3YT.

## GENERAL PRODUCT CARE

To keep this product working well and looking good, follow these guidelines:

- Avoid putting it near heating appliances and devices that generate electrical noise (for example, motors or fluorescent lamps).
- DO NOT expose it to direct sunlight or moisture.
- Avoid dropping the product or treating it roughly.
- Clean with a soft cloth.
- DO NOT immerse the parent unit and the baby unit in water and do not clean them under the tap.
- DO NOT use cleaning spray or liquid cleaners.
- Make sure the baby unit and parent unit are dry before you connect them to the mains again.

## STORAGE

When you are not going to use the baby monitor for some time, store the parent unit, the baby unit and the adaptors in a cool and dry place.

## ADULT SUPERVISION

- This baby monitor should be used as an aid and proper adult supervision is required.
- Do not place the baby unit inside the cot or playpen.
- As for children's safety, touch or play with the baby monitor and all the accessories are not allowed. THIS IS NOT A TOY.