

VM4263

3.5" Video Baby Monitor with Night Light

vtech

Quick start guide

TECHNICAL SPECIFICATIONS

Frequency control	Crystal controlled PLL synthesizer
Transmit frequency	Baby Unit: 2405 - 2475 MHz Parent Unit: 2405 - 2475 MHz
Channels	32
LCD	3.5" Colour LCD (QVGA 320x240 pixel)
Nominal effective range	Actual operating range may vary according to environmental conditions at the time of use.
Power requirements	Parent Unit: 3.6V, 2600mAh Li-ion, 9.36Wh Li-ion battery Baby Unit power adaptor: Output: 5V DC @ 1A Parent Unit power adaptor: Output: 5V DC @ 1A

Specifications are subject to change without notice.
© 2025 VTECH Telecommunications Ltd.
All rights reserved. 10/25 VM4263_UK_QSG_V1.



IMPORTANT SAFETY INSTRUCTIONS

The applied nameplate is located at the bottom of the Baby Unit base. When in use, basic safety precautions should always be followed to reduce the risk of fire, electric shock and injury, including the following:

- Follow all warnings and instructions marked on the product.
- Adult setup is required.
- CAUTION:** Do not install the Baby Unit at a height above 2 metres.
- This product is intended as an aid. It is not a substitute for responsible and proper adult supervision and should not be used as such.
- This product is not intended for use as a medical monitor.
- Do not use this product near water, for example, near to a bath, sink, swimming pool or shower.
- CAUTION:** Use only the internal, non-user replaceable battery fitted to the Parent Unit. There may be a risk of explosion if a wrong type of battery is used for the Parent Unit. The battery cannot be subjected to high or low extreme temperature and low air pressure at high altitude during use, storage or transportation. Disposal of batteries in fire or a hot oven, mechanically crushing or cutting the battery can result in an explosion. Subjecting products or batteries to an extremely high temperature environment can result in explosion or leakage of flammable liquids, or gas. Product or batteries subjected to extremely low air pressures may result in explosion or leakage of flammable liquids, or gas.
- Use only the power adaptors supplied with this product. Incorrect power adaptor polarity or voltage can seriously damage the product.

Power adaptor information:
Baby Unit output: 5V DC 1A
VTECH Telecommunications Ltd.
Model: VT05EUK05100

-OR-
Jiangxi Jian Aohai Technology Co., Ltd.
Model: A318-050100W-UK2

Parent Unit output: 5V DC 1A
VTECH Telecommunications Ltd.
Model: VT05EUK05100

-OR-
Jiangxi Jian Aohai Technology Co., Ltd.
Model: A318-050100W-UK2

The Parent Unit USB-C charger power rating must be between 5W minimum and 15W maximum to achieve the maximum charging speeds stated.

Rechargeable battery information:
Li-ion battery, 3.6V, 2600mAh, 9.36Wh
Zhuhai Great Power Energy Co., Ltd.
Model: ICR18650-2.6Ah-3.6V-351P

-OR-
UNION SUPPO BATTERY (LIAONING) CO., LTD.
Model: 351PBL1865-2.6

- The power adaptor is intended to be correctly oriented in a vertical or floor mount position. The prongs are not designed to hold the plug in place if it is plugged into a ceiling, under-the-table or cabinet outlet.
- For pluggable equipment, the socket-outlet (power adaptor) should be installed near the equipment and should be easily accessible.
- Unplug this product from the wall outlet before cleaning. Do not use liquid or aerosol cleaners. Use a damp cloth for cleaning.
- Do not modify the power adaptors or replace with other third-party adaptors.
- Do not allow anything to rest on the power cords. Do not install this product where the cords may be walked on or damaged.
- The product should only be operated from a power source

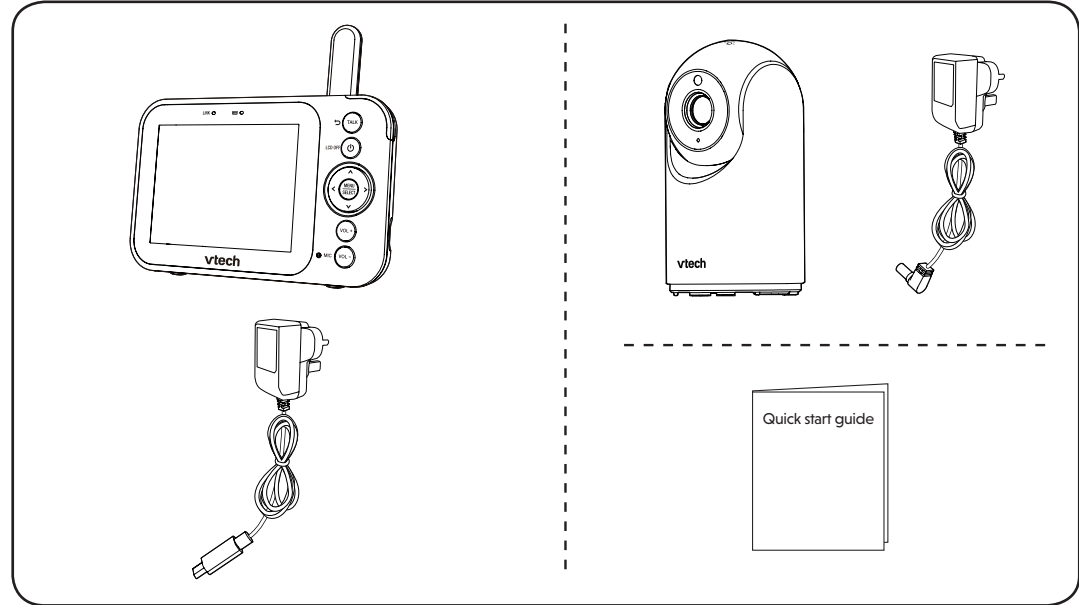
indicated on the power adaptor label or marking. If you are unsure of the type of power supply in your home, consult your dealer or electricity supply provider.

- Do not overload wall outlets or use an extension cord.
- Do not place this product on an unstable table, shelf, stand or other unstable surfaces.
- This product should not be placed in any area where proper ventilation is not provided. Any slots or openings in the back or bottom of this product are provided for ventilation. To protect from overheating, openings must not be blocked by placing the product on a soft surface such as a bed, sofa or rug. This product should never be placed near or over a radiator or heat source.
- Never insert any objects through any apertures or slots in the product as this can be dangerous and cause damage to the battery or other internal parts. Never spill any liquids on the product.
- To reduce the risk of electric shock, do not disassemble this product, but take it to an authorised service facility. Disassembling or removing parts of the product other than battery replacement via a battery door (if applicable) may expose dangerous voltages or other risks.
- You should test the sound reception every time you turn on the units or move one of the components.
- Periodically examine all components for damage.
- There is a very low risk of privacy loss when using certain electronic devices, such as baby monitors, cordless telephones, etc. To protect your privacy, make sure the product has never been used before purchase, reset the baby monitor periodically by powering off and then powering on the units, and power off the baby monitor if you are not intending to use it for some time.
- Children should be supervised to ensure that they do not play with the product.
- The small parts of this monitor can be swallowed by babies or small children. Keep these parts out of reach of children.
- The product is not intended for use by persons (including children) with reduced physical, sensory or mental capabilities, or lack of experience and knowledge, unless they have been given supervision or instruction concerning use of the appliance by a person responsible for their safety.

SAVE THESE INSTRUCTIONS

- Use and store the product at a temperature between 0°C and 40°C.
- Mishandling batteries can cause burn, fire or explosion hazards.
- Batteries should not be exposed to excessive heat such as bright sunshine or fire.
- Do not expose the product to extreme cold, heat or direct sunlight. Do not place the product close to a heating source.
- Warning—Strangulation Hazard—Children have STRANGLED in cords. Keep this cord out of the reach of children (more than 0.9m away). Do not remove warning label on the adaptor cord.
- Never place the Baby Unit inside the baby's cot or playpen. Never cover the Baby Unit or Parent Unit with anything such as a towel or a blanket.
- Other electronic products can cause interference to your Parent Unit and Baby Unit. Try installing your Baby Unit as far away as possible from the following electronic devices: wireless routers, radios, mobile telephones, intercoms, room monitors, televisions, personal computers, kitchen appliances (e.g. microwave ovens) and cordless telephones.

WHAT'S IN THE BOX

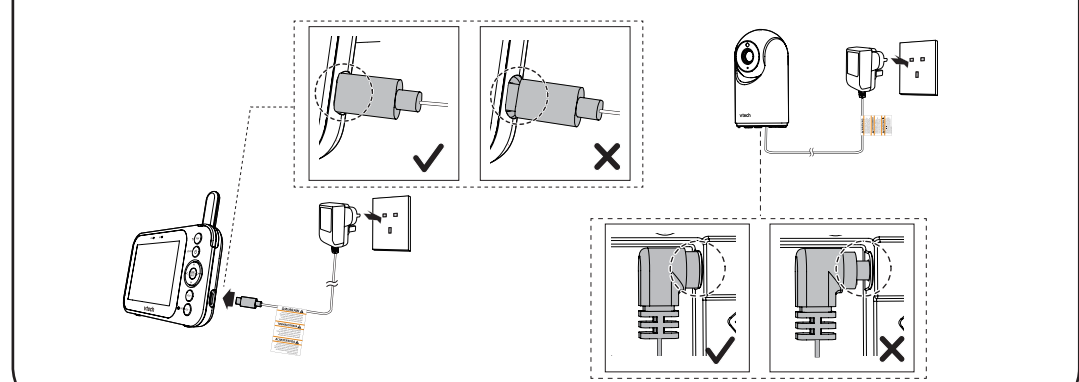


1 CONNECT THE BABY MONITOR

The Parent Unit turns on automatically after connecting the power adaptor to the power socket, and the battery LED light illuminates.

NOTES

- The rechargeable battery in the Parent Unit is built-in.
- Use only the power adaptors supplied with this product.
- Make sure the baby monitor is not connected to an electronically/timer controlled electric power outlet.
- Connect the power adaptors in a vertical or floor mount position only. The adaptor prongs are not designed to hold the weight of the Parent Unit and the Baby Unit, so do not connect them to any ceiling, under-the-table, or cabinet outlets. Otherwise, the adaptors may not properly connect to the outlets.
- Make sure the parent unit, the Baby Unit and the power adaptor cords are out of reach of children.



1 CONNECT THE BABY MONITOR (CONT'D)

Charge the Parent Unit battery

When you have connected and turned on the Parent Unit, the battery will be charged automatically.

NOTES

- Before using the baby monitor for the first time, charge the Parent Unit battery for 12 hours. When the Parent Unit battery is fully charged, the battery icon segments become solid.
- It takes longer to charge the battery when the Parent Unit is turned on. To shorten the charging time, turn the Parent Unit off while charging.
- The standby time varies depending on the sensitivity level set, your actual use and the age of the battery.

The battery icon indicates the battery status (see the following table).

BATTERY INDICATORS	BATTERY STATUS	ACTION
The screen displays . The light flashes.	The battery has very little charge and may be used for only a short time.	Charge without interruption (about 30 minutes).
The battery icon segments are solid .	The battery is fully charged.	To keep the battery charged, connect it to AC power when in use.

2 POWER ON OR OFF THE BABY MONITOR

- Slide the **ON/OFF** switch to turn your Baby Unit on or off.
- Press and hold **POWER** to power on or off your Parent Unit.



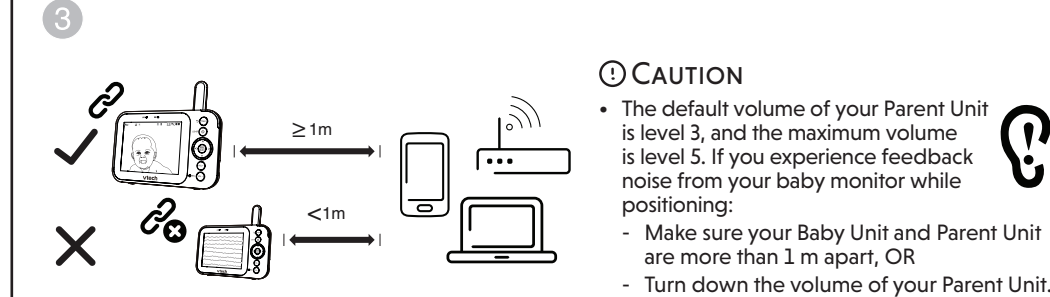
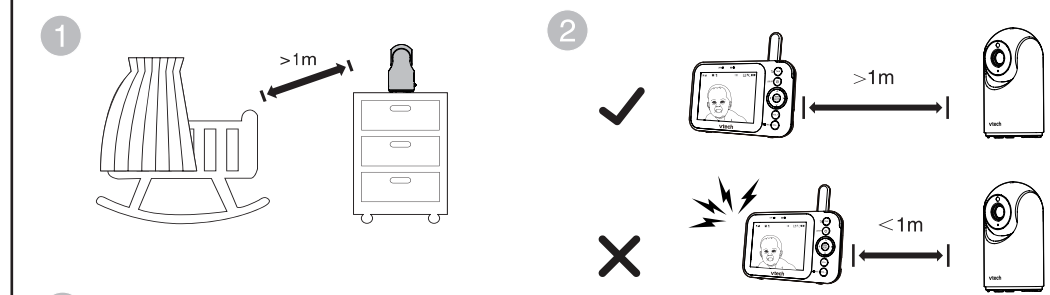
NOTES

- Peel off the lens/screen protector before use.
- For optimum reception, always raise the parent unit antenna.

3 POSITIONING THE BABY MONITOR

CAUTION

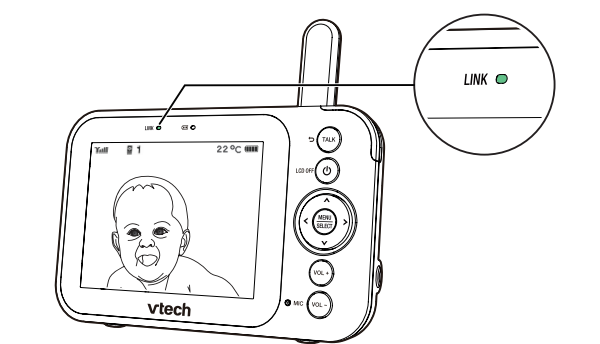
- Keep the Baby Unit out of the reach of your baby. Never place or mount the Baby Unit inside the baby's cot or playpen.



- To avoid interference from other electronic devices, place your baby monitor at least 1 metre away from devices such as wireless routers, microwave ovens, mobile phones and computers.

4 STATUS CHECK

Once you power on the Parent Unit, the Parent Unit displays images from the Baby Unit, and the **LINK** LED light turns on.



BASIC OPERATION - PARENT UNIT

Use the menu

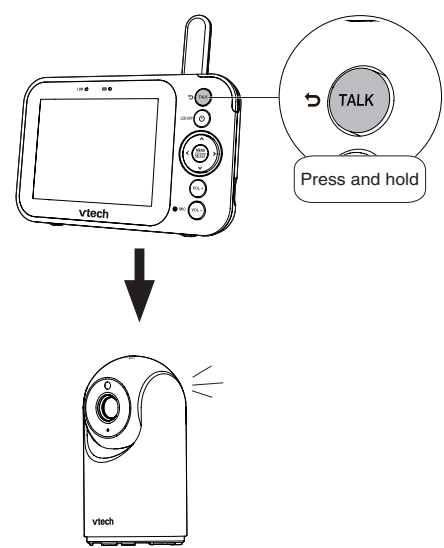
Press **MENU** to enter the menu, or save a setting. You can use the Parent Unit for advanced settings or operations, such as to play or stop the Baby Unit lullaby, or to adjust the Baby Unit sound sensitivity.

While in the menu:

- Press **Left** or **Right** to scroll among the menu options.
- Press **Up** or **Down** to select an item.
- Press **SELECT** to confirm your selection.
- Press **TALK** to exit the menu and return to live view.

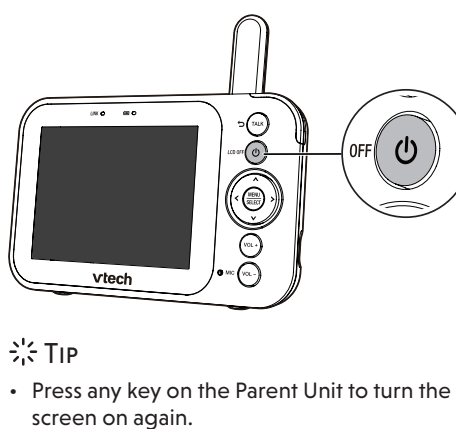
Talk to your Baby Unit

Press and hold **TALK** and speak to your Parent Unit. Your voice is transmitted to the Baby Unit. When finished talking, release the **TALK** key to hear your baby again.



Turn off the screen

Press **Power/LCD OFF** to switch off the screen. You can still hear sound from the selected Baby Unit.

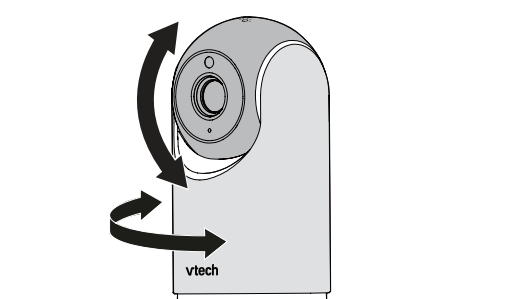


TIP

- Press any key on the Parent Unit to turn the screen on again.

Pan and Tilt the Baby Unit

- Press **Arrow keys** **Left** **Up** **Right** **Down** to pan and tilt the Baby Unit.

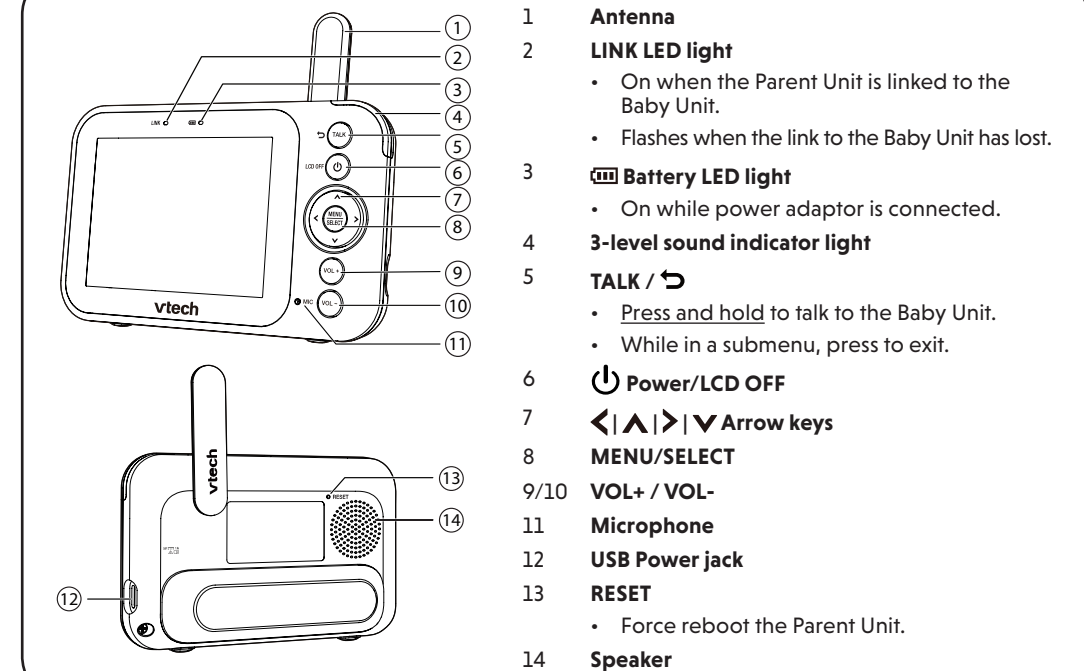


Zoom

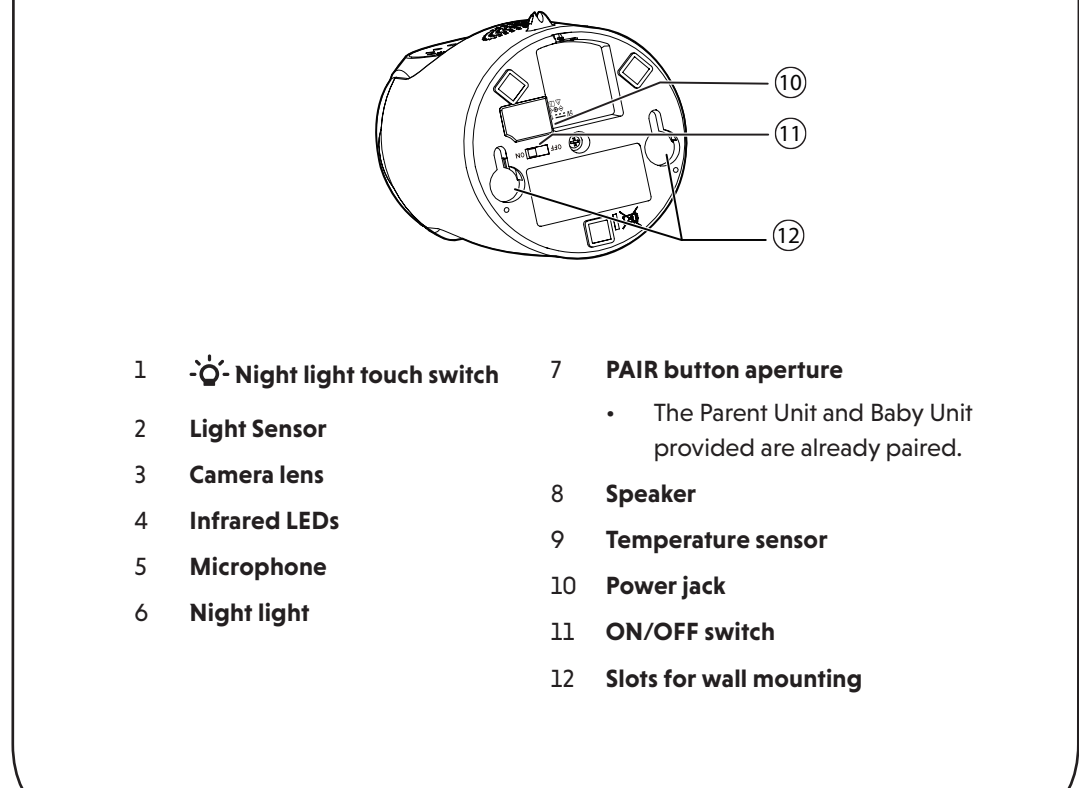
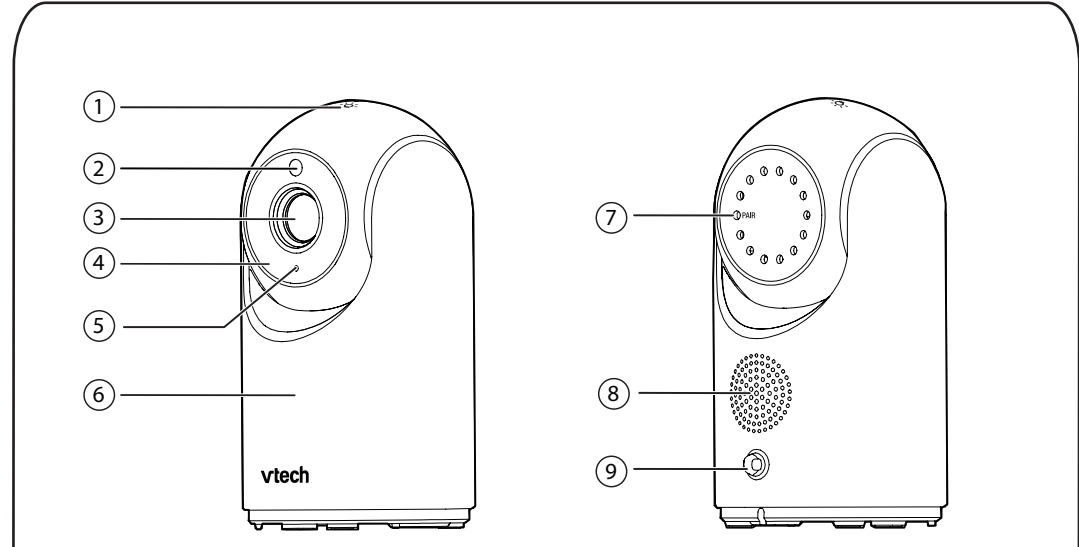
- Press **MENU** when in idle mode.
- Choose , and select .
- Press **Up** or **Down** to choose **2X** (Zoom in) or **1X** (Zoom out), then press **SELECT** to confirm your selection.



OVERVIEW - PARENT UNIT



OVERVIEW - BABY UNIT



PARENT UNIT ICONS

Status icons

Connection status

- or displays when strong signal strength is detected between the Baby Unit and the Parent Unit.
- or displays when moderate or low signal strength is detected between the Baby Unit and the Parent Unit.

Current view status

- Displays the number of the Baby Unit that is being viewed.

Zoom

- Displays when the current image on the Parent Unit has zoomed in.

Night vision

- Displays when the Baby Unit being viewed has activated the night vision feature.

Lullaby

- Displays when a lullaby is playing.

Talkback

- Displays when talking back to the Baby Unit from the Parent Unit.

Night light

- Displays when the Baby Unit's night light is turned on.

- Displays when the night light Auto-on feature is activated, but not yet triggered by sound.

- Displays when the Baby Unit's night light has been triggered to turn on automatically by sound.

Mute alert

- Displays when the Parent Unit speaker volume is set to zero.
- Displays when the Parent Unit is talking to the Baby Unit.

Real-time temperature

- Displays the real-time temperature detected by the Baby Unit in Fahrenheit (°F) or Celsius (°C) (e.g. 57°F or 14°C).

Battery status

- animates when the battery is charging.
- displays solid when the battery is fully charged.
- displays when the battery is low and needs charging.

Main menu icons

Main menu

Sub-menu

Volume

Settings

Brightness

- Adjust the Parent Unit speaker volume.

Screen off timer

- Adjust the Parent Unit LCD screen brightness level.

VOX (Voice Activated Alert) Sensitivity

- Adjust the Parent Unit speaker volume.

Zoom

- Zoom in and out of the video displayed from the Baby Unit.

Temperature

- Set temperature display in Fahrenheit (°F) or Celsius (°C).

MIN MAX

- Set the minimum/maximum temperature.

OFF ON

- Turn on/off temperature alert tone.

Set the Parent Unit to beep whenever the room temperature detected by the Baby Unit falls outside of the set temperature range.

Lullaby

stop 1 2 3 4

- Select between two lullabies or two sounds to play or stop.

Lullaby volume

- Adjusts the Baby Unit speaker volume when playing a lullaby.

NOTE

- When the Parent Unit screen is off, if alerts are received, for example, no signal received between the Parent Unit and Baby Unit, or a low battery, the Parent Unit screen will turn on.

☑️ PARENT UNIT ICONS (CONT'D)

Main menu icons

Main menu	Sub-menu
Night Light 	Night light On/Off • Turn on/off the night light.
	Night light colour • Select one of the seven colours or choose number 8, the rainbow colour.
	Night light timer • Set the timer to turn the night light off. • When set to AUTO , the night light turns on upon detecting sound from the Baby Unit. It will turn off after 15 minutes of no sound detection. • The sound sensitivity level is the same as the VOX sensitivity in Screen off timer.
	Adaptive night light • Turn on/off the night light's ability to automatically adjust its brightness based on surrounding lighting conditions. If the room is bright, the night light adjusts itself to be brighter; if the room is dim, the night light adjusts itself to be dimmer.

Warning icons and messages

	The battery is empty and needs to be recharged.
	Operation is in progress.
	The temperature detected by the Baby Unit is higher than the maximum temperature alert setting.
	The temperature detected by the Baby Unit is lower than the minimum temperature alert setting.
	The Parent Unit is searching for Baby Unit or the link between the Baby Unit and the Parent Unit has been lost.
	The Parent Unit is connected to AC power.

Parent Unit Indication Lights

LINK 	<ul style="list-style-type: none">On when the Parent Unit is linked to the Baby Unit.Flashes when the link to the Baby Unit being viewed is lost.
	<ul style="list-style-type: none">On when the Parent Unit is connected to AC power, or the battery is charging.Flashes when the Parent Unit battery is low and needs charging.Off when the Parent Unit is disconnected from AC power.

🔊 SOUND SENSITIVITY AND SOUND ACTIVATION

Adjust the sound sensitivity of the Baby Unit

The Parent Unit screen will turn on only when the detected sounds exceed a set level.

Use the Parent Unit to adjust the microphone sensitivity of your Baby Unit. The higher the sensitivity level, the more sensitive the Baby Unit is in detecting sounds that transmit to the Parent Unit. The VOX sensitivity level is preset to the highest level.

VOX SENSITIVITY LEVEL	Highest	High	Medium	Low	Lowest
DESCRIPTION	The Parent Unit screen turns on for quiet sounds, (including background noises) from your baby's room.	The Parent Unit screen turns on for soft babbling and louder sounds from your baby. It remains off when your baby sleeps soundly.	The Parent Unit screen turns on for loud babbling and louder sounds from your baby. It remains off when your baby makes soft sounds.	The Parent Unit screen turns on for crying and louder sounds from your baby. It remains off when your baby makes soft sounds.	The Parent Unit screen turns on for loud crying or screeching sounds from your baby. It remains off when your baby makes soft sounds.

When **VOX** is selected, the Parent Unit screen stays off to save power when the Baby Unit detects sounds that are lower than the set sensitivity level. Once the Baby Unit detects sounds that are louder than the set sensitivity level, the Parent Unit screen turns on automatically. It will then turn off again after 50 seconds if the sounds detected are lower than the set sensitivity level.

🌙 DIM MODE

Dim mode helps you save Parent Unit power. Your Parent Unit display will automatically dim after 10 minutes of inactivity, when no keys are pressed or alerts are received from the Baby Unit.

Press any button

NOTE

- When the screen is dimmed, any keypress or alert message will trigger the screen to return to the preset brightness level. After 10 minutes of inactivity, it will resume back to dim mode.

🌙 NIGHT VISION

The Baby Unit has infrared LEDs that allow you to see your baby clearly at night or in a dark room. When the Baby Unit detects low light levels, the infrared LEDs are switched on automatically. The images from the Baby Unit are in black and white, and appears on the parent unit screen.

NOTES

- It is normal to see a short white glare on your Parent Unit screen when the Baby Unit adapts to the dark environment.
- When the infrared LEDs are on, the images are in black and white. This is normal.

TIP

- Depending on the surroundings and other interfering factors, for example, lighting, objects, colours and backgrounds, the image quality may vary. Adjust the Baby Unit angle or place the Baby Unit at a higher location to prevent glare and a blurred display.

🔧 MOUNT THE BABY UNIT ON DRY WALL (OPTIONAL)

Not Included

You will need to purchase the following items separately to mount your Baby Unit:

- 2 screws
- 2 wall plugs

NOTE

- The types of screws and wall plugs you need depend on the composition of the wall.

1

NOTE

- Check for reception strength and camera angle before drilling the holes.

Use a pencil and mark the position of two holes to be drilled, making sure they are the same distance apart as the wall mount holes under the Baby Unit base.

2

3

Insert the screws into the holes and tighten the screws until only 6.5 mm of the screws are exposed.

4

Align the wall mount holes on the Baby Unit with the screws on the wall. Slide the Baby Unit down until it locks into place.

5

Adjust the camera angle.

🗉 FREQUENTLY ASKED QUESTIONS

Below are the questions most frequently asked about the baby monitor.

Why does the baby monitor not respond normally?	Try the following (in the order listed) for common cure: 1. Disconnect the power to the Baby Unit and the Parent Unit. 2. Wait a few seconds before connecting power back to the Baby Unit and the Parent Unit. 3. Turn on the Baby Unit and the Parent Unit. 4. Wait for the Parent Unit to synchronise with the Baby Unit. Allow up to one minute for this to take place.
Why doesn't the Baby Unit and Parent Unit power-on light illuminate when the units are switched on?	Perhaps the Parent Unit is not connected to the power. Insert the adaptor plug into the Parent Unit and insert the adaptor in a wall socket. Then, press and hold to switch on the Parent Unit to establish connection with the Baby Unit. Perhaps the Baby Unit is not connected to the power. Insert the adaptor plug into the Baby Unit and insert the adaptor in a wall socket. Slide the ON/OFF switch to turn on the Baby Unit to establish a connection with the Parent Unit.
Why doesn't my Parent Unit charge while connected to AC power?	Make sure the power is not controlled by an electronically controlled wall switch. The battery may be degraded through extended use or defective. See Warranty for repair/replacement.
Why is my screen in black and white?	The screen is in black and white during night-time or in a dark room when the night vision feature is activated. This is normal.
Why do I get glare or blurry display on my screen when viewing my baby at night?	During night-time or in a dark room, the surroundings and other interfering factors, like lighting, objects, colours and backgrounds may affect the image quality on your Parent Unit screen. Adjust the Baby Unit angle or place the Baby Unit at a higher level to prevent glare and a blurry display.
Why does the baby monitor produce a feedback noise?	The Parent Unit and Baby Unit may be too close to each other. <ul style="list-style-type: none">Move the Parent Unit away from the Baby Unit until the noise stops; ORTurn down the volume of your Parent Unit.
Why does the Parent Unit beep?	The Baby Unit may be out of range. Move the Parent Unit closer to the Baby Unit (but not less than 1m). The Parent Unit may not have enough charge for the Parent Unit to perform normally. Charge the battery in the Parent Unit until the battery icon becomes solid . The temperature of your baby's room may be too high or too low.
Why does the Parent Unit react to other sounds other than those of my baby?	If the Baby Unit also picks up other sounds than those of your baby, try adjusting the VOX sensitivity level to a lower level or lower the Parent Unit speaker volume.
Why don't I hear a sound/Why can't I hear my baby cry?	The Parent Unit speaker volume may be too low, press VOL+ to increase the volume.
Why can't I establish a connection? Why is the connection lost every now and then? Why are there sound interruptions?	The Baby Unit may be out of range. Move the Parent Unit closer to the Baby Unit (but not less than 1m). Other electronic products and wireless products may cause interference with your baby monitor. Try installing your baby monitor as far away from these devices as possible.

CUSTOMER SERVICE AND PRODUCT WARRANTY

PRODUCT WARRANTY

Thank you for choosing this quality product from VTech.

- The product detailed above is covered by a one year warranty from the date of purchase, against any defects in materials or workmanship.
- The product may be returned to the place of purchase.
- If the product covered by this warranty is damaged due to misuse, modification or unauthorised repair, or because of faulty batteries, battery discharge or incorrect electrical connections, then this warranty becomes void.
- This warranty is personal to the original purchaser and is not transferable.
- Breakages to the LCD screen are not covered by the warranty.
- Damage to the antenna is not covered by the warranty.

Email: service-ukbm@vtechphones.eu

VTech Electronics Europe Plc, c/o XPO Logistics, Warehouse 350, Cat & Fiddle Lane, West Hallam, DE7 6HE

THIS WARRANTY IS OFFERED AS AN EXTRA BENEFIT AND DOES NOT AFFECT CONSUMERS' STATUTORY RIGHTS.

This warranty is valid for the UK and Ireland only. For products purchased outside the UK and Ireland, please contact your local distributor or place of purchase.

IMPORTANT
Please retain this booklet with your sales receipt as proof of the date of purchase.

Customer Service
Please visit www.vtechphones.eu to contact our Customer Services Department.

DISPOSAL OF BATTERIES AND PRODUCT

The crossed-out wheelie bin symbols on products and batteries, or on their respective packaging, indicates they must not be disposed of in domestic waste as they contain substances that can be damaging to the environment and human health.

The chemical symbols Hg, Cd or Pb, where marked, indicate that the battery contains more than the specified value of mercury (Hg), cadmium (Cd) or lead (Pb) set out in Battery Directive (2006/66/EC).

The solid bar indicates that the product was placed on the market after 13th August, 2005.

Help protect the environment by disposing of your product or batteries responsibly.

DECLARATION OF CONFORMITY

This product is intended for use within UK and Ireland.
This equipment complies with the essential requirements to EU's Radio Equipment Directive (2014/53/EU) and the UK's Radio Regulations 2017 on radio systems and telecommunication equipment.
VTech Telecommunications Ltd. hereby declares that this 3.5" Video Baby Monitor with Night Light VM4263 is in compliance with the essential requirements and other relevant provisions of EU's Radio Equipment Directive (2014/53/EU) and UK's Radio Equipment Regulations 2017.
The Declaration of Conformity for the VM4263 is available from www.vtech.com/en/declaration-of-conformity.



Manufacturer: VTech Telecommunications Ltd.
23/F., Tai Ping Industrial Centre, Block I, 57 Ting Kok Road, Tai Po, Hong Kong.
Importer: VTech Electronics Europe Plc.
Napier Court, Abingdon Science Park, Abingdon, Oxon, OX14 3YT.

🧼 GENERAL PRODUCT CARE

To keep this product working well and looking good, follow these guidelines:

- Avoid placing near heating appliances and devices that generate electrical noise (for example, motors or fluorescent lamps).
- DO NOT expose to direct sunlight or moisture.
- Avoid dropping the product or treating it roughly.
- Clean with a soft damp cloth.
- Clean the USB charging port of dust, dirt, and lint regularly.
- DO NOT immerse the Parent Unit or the Baby Unit in water and do not clean under running water.
- DO NOT use solvents, household cleaning sprays, or liquid cleaners.
- Make sure the Parent Unit and the Baby Unit are dry before reconnecting to the mains supply.

📦 STORAGE

When you are not going to use the baby monitor for some time, store the Parent Unit, the Baby Unit and the adaptors in a cool, dry place.

ADULT SUPERVISION

- This baby monitor should be for use by adults only.
- Do not place the Baby Unit inside the cot or playpen.
- To ensure your children's safety, do not allow them to touch or play with the baby monitor and its accessories. THIS IS NOT A TOY.