

RM7768HD
7" Touch Screen Wi-Fi
1080p Pan & Tilt Monitor



vtech
Quick start guide

Congratulations

on purchasing your new Vtech product.
Before using this baby monitor, please read the **Important safety instructions**.

What does HD Video Monitor do?

Vtech 7" Touch Screen Wi-Fi 1080p Pan & Tilt Monitor allows you to stay close to your baby when you are on the move or away. This monitor is Wi-Fi enabled, using your home wireless network to stream live video and audio through the 1080p baby unit and 7-inch colour screen parent unit. It allows you to maintain a constant connection to your baby.

You can also monitor from your smartphone and mobile tablet.

Vtech 7" Touch Screen Wi-Fi 1080p Pan & Tilt Monitor uses **MyVtech Baby Pro** app to let you instantly see and hear what's happening with your baby from anywhere in the world. The app can be downloaded from the App Store or the Google Play™ Store.

IMPORTANT SAFETY INSTRUCTIONS

The applied nameplate is located at the bottom of the baby unit's base.

When using your equipment, basic safety precautions should always be followed to reduce the risk of fire, electric shock and injury, including the following:

- Follow all warnings and instructions marked on the product.
- Adult setup is required.
- CAUTION:** Do not install the baby unit at a height above 2 metres.
- This product is intended as an aid. It is not a substitute for responsible and proper adult supervision and should not be used as such.
- This product is not intended for use as a medical monitor.
- Do not use this product near water, for example, near to a bath, sink, swimming pool or shower.
- CAUTION:** Use only the battery provided. There may be a risk of explosion if a wrong type of battery is used for the parent unit. The battery cannot be subjected to high or low extreme temperature and low air pressure at high altitude during use, storage or transportation. Disposal of battery in fire or a hot oven, mechanically crushing or cutting the battery can result in an explosion. Leaving the battery in an extremely high temperature surrounding environment can result in an explosion or the leakage of flammable liquid or gas. Dispose of used batteries according to the information in instructions.
- Use only the power adaptors included with this product. Incorrect power adaptor polarity or voltage can seriously damage the product.

Power adaptor information:

Baby Unit Output: 5V DC 1A
Vtech Telecommunications Ltd.
Model: VT07EUK05200
Parent Unit Output: 5V DC 2A
Vtech Telecommunications Ltd.
Model: VT07EUK05200

Rechargeable battery information:

3.7V 5000mAh, 18.5Wh Lithium-ion battery
Zhuhai Great Power Energy Co., Ltd.
Model: GSP806090-5AH-3.7V-1S1P

- The power adaptor is intended to be correctly oriented in a vertical or floor mount position. The adaptors are not designed to hold the plug in place if it is plugged into a ceiling, under-the-table or cabinet outlet.
- For pluggable equipment, the socket-outlet (power adaptor) should be installed near the equipment and should be easily accessible.
- Unplug this product from the wall outlet before cleaning. Do not use liquid or aerosol cleaners. Use a damp cloth for cleaning.
- Do not modify the power adaptors or replace with other adaptors, as this causes a hazardous situation.
- Do not allow anything to rest on the power cords. Do not install this product where the cords may be walked on or crimped.
- This product should be operated only from the type of power source indicated on the marking label. If you are not sure of the type of power supply in your home, consult your dealer or electricity supply provider.
- Do not overload wall outlets or use an extension cord.
- Do not place this product on an unstable table, shelf, stand or other unstable surfaces.

- This product should not be placed in any area where proper ventilation is not provided. Slots and openings in the back or bottom of this product are provided for ventilation. To protect them from overheating, these openings must not be blocked by placing the product on a soft surface such as a bed, sofa or rug. This product should never be placed near or over a radiator or heat source.
- Never push objects of any kind into this product through the slots because they may touch dangerous voltage points or create a short circuit. Never spill liquid of any kind on the product.
- To reduce the risk of electric shock, do not disassemble this product, but take it to an authorised service facility. Disassembling or removing parts of the product other than via the battery door may expose you to dangerous voltages or other risks. Incorrect reassembling can cause electric shock when the product is subsequently used.
- You should test the sound reception every time you turn on the units or move one of the components.
- Periodically examine all components for damage.
- There is a very low risk of privacy loss when using certain electronic devices, such as baby monitors, cordless telephones, etc. To **protect your privacy, make sure the product has never been used before purchase, reset the baby monitor periodically by powering off and then powering on the units, and power off the baby monitor if you are not intending to use it for some time.**
- Children should be supervised to ensure that they do not play with the product.
- The small parts of this monitor can be swallowed by babies or small children. Keep these parts out of reach of children.
- The product is not intended for use by persons (including children) with reduced physical, sensory or mental capabilities, or lack of experience and knowledge, unless they have been given supervision or instruction concerning use of the appliance by a person responsible for their safety.

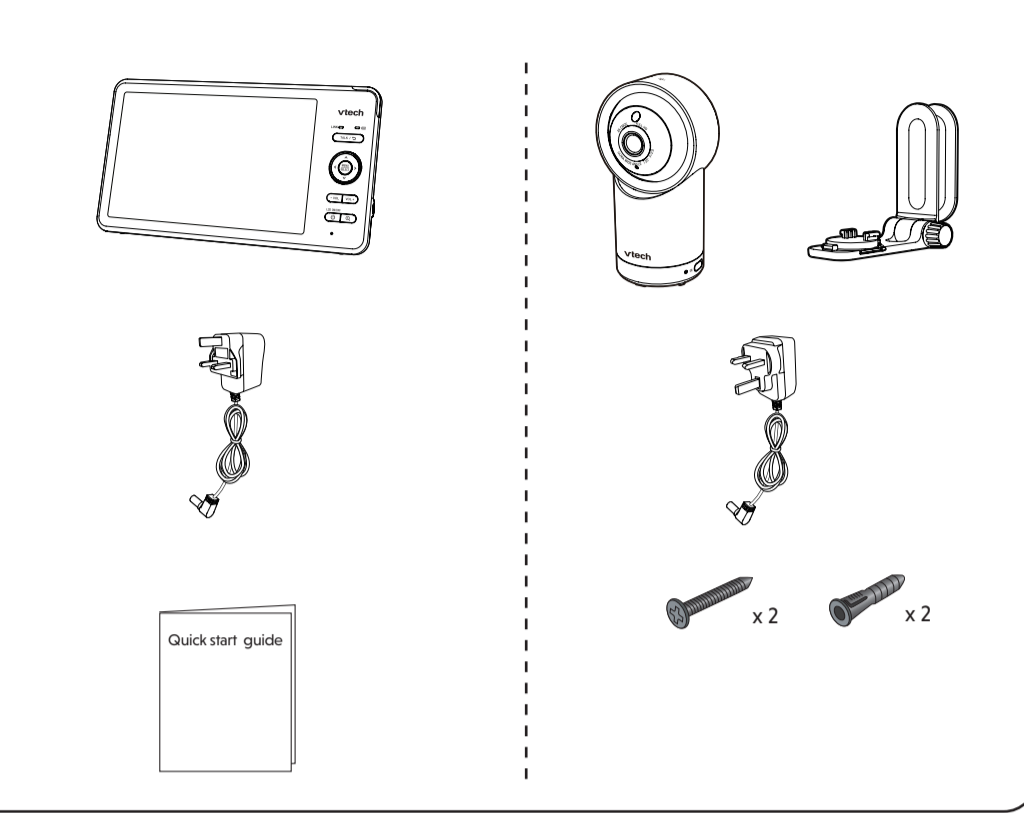
Warnings

- Use and store the product at a temperature between 0°C and 40°C.
- Mishandling batteries can cause burn, fire or explosion hazards.
- Batteries should not be exposed to excessive heat such as bright sunshine or fire.
- Do not expose the product to extreme cold, heat or direct sunlight. Do not put the product close to a heating source.
- Warning—Strangulation Hazard—**Children have STRANGLED in cords. Keep this cord out of the reach of children (more than 0.9m away). Do not remove warning label on the adaptor cord.
- Never place the camera unit(s) inside the baby's cot or playpen. Never cover the camera unit(s) or parent unit with anything such as a towel or a blanket.
- Other electronic products may cause interference with your camera unit. Try installing your camera unit as far away from these electronic devices as possible: wireless routers, radios, cellular telephones, intercoms, kitchen monitors, televisions, personal computers, room appliances and cordless telephones.

SAVE THESE INSTRUCTIONS

WHAT'S IN THE BOX

Your baby monitor package contains the following items. Save your sales receipt and original packaging in the event warranty service is necessary.



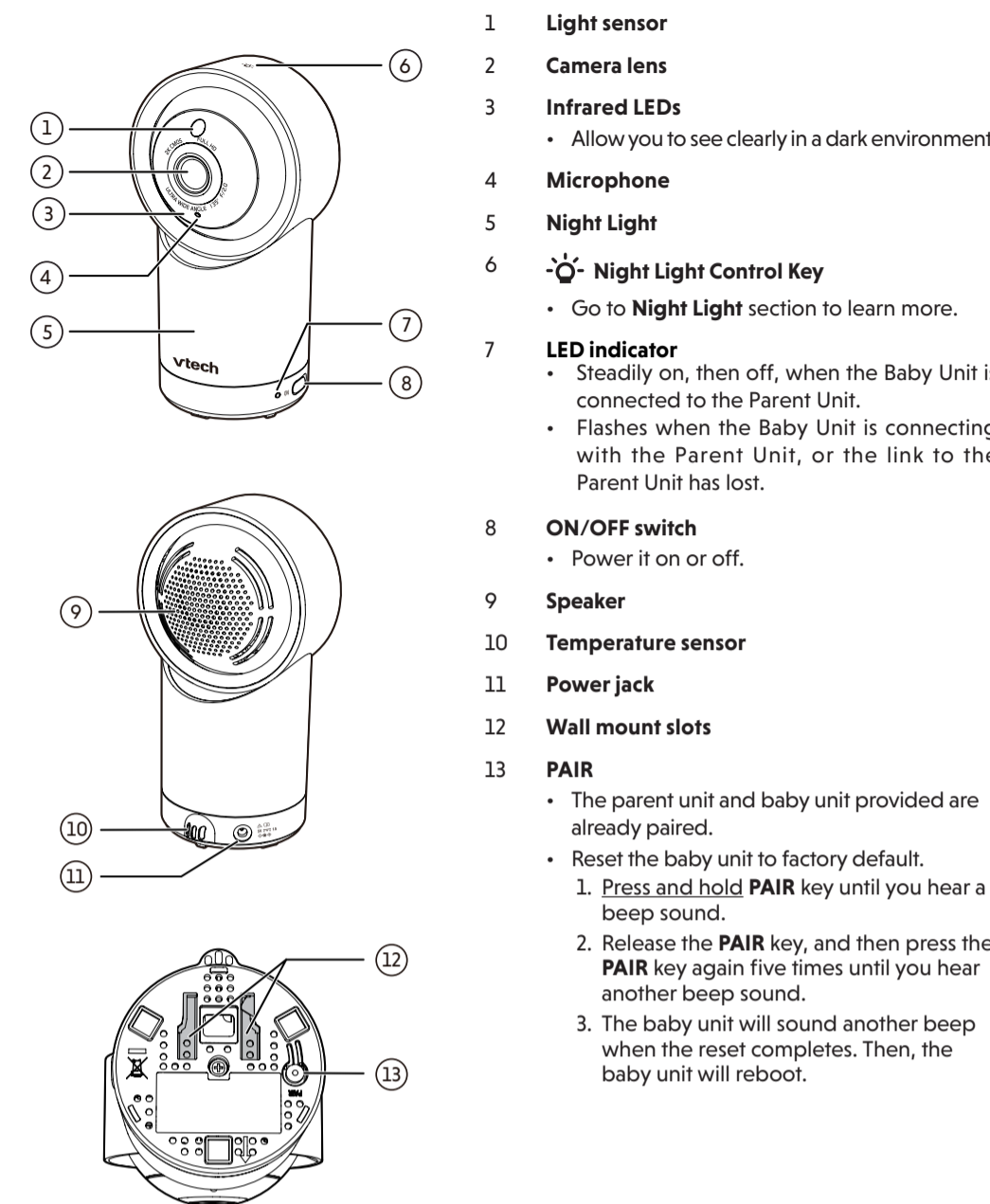
Requirements

For mobile access:

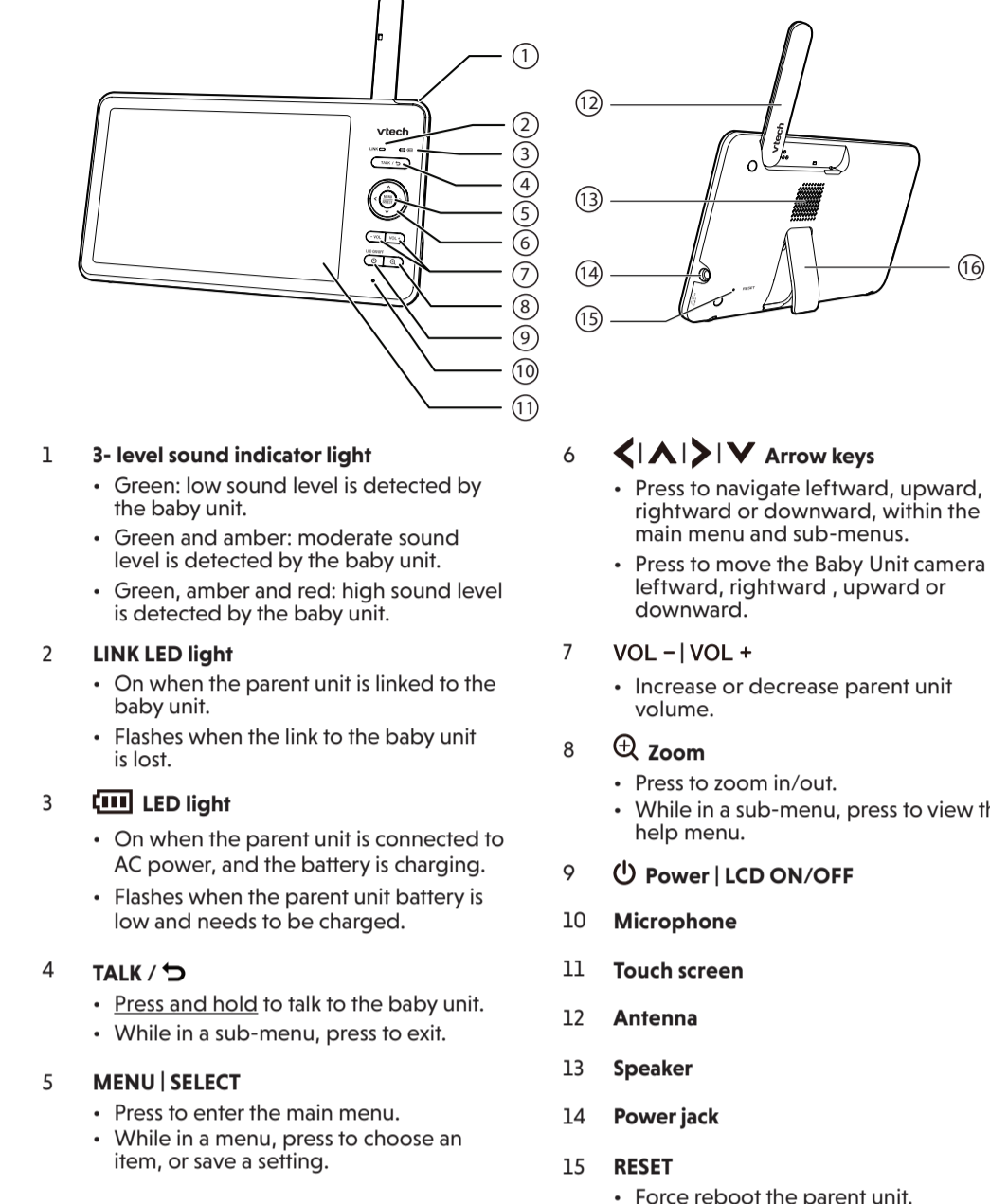
| MyVtech Baby Pro mobile app | |
|-----------------------------|---|
| Network | Wi-Fi |
| Wi-Fi router | 2.4GHz 802.11 b/g/n |
| Internet connection | 1.5 Mbps @ 720p or 2.5 Mbps @1080p upload bandwidth per baby unit |

OVERVIEW

Baby unit overview



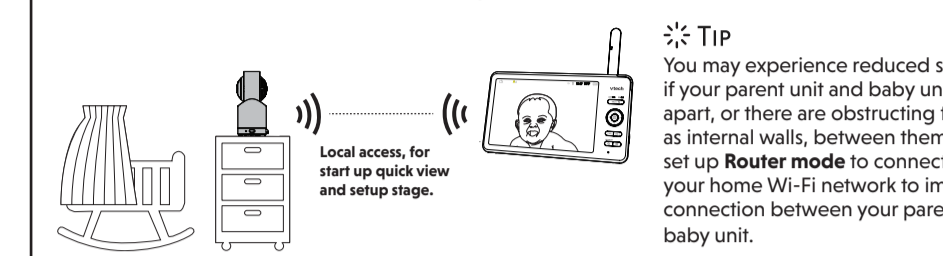
Parent unit overview



HOW THE SYSTEM WORKS

Tip For better security and more stable connectivity, this baby monitor requires connecting to a Wi-Fi network and operating in Router mode connection.

Direct mode
Your baby monitor parent unit and baby unit connect to each other in **Direct mode** by default, which allows you to immediately stream video out of the box. **It is NOT recommended to continue using Direct Mode connection after initial installation.**



Router mode
You are required to set up your monitor in **Router mode** to enjoy live video streaming via your parent unit with an enhanced connection. **Router mode** is the recommended mode for stable connectivity.



Router mode uses your home Wi-Fi network to connect your video monitor. It supports live video streaming through the parent unit and smartphone app.

If you want to stream live video remotely with your mobile device, download and install the **MyVtech Baby Pro** mobile app. With the mobile app, your Wi-Fi router (not included) provides Internet connectivity to your HD video monitor system. It serves as a communicating channel between your baby unit and mobile device, allowing you to monitor and/or control your baby unit wherever you are. For more details, see **Download app for mobile access** section in this quick start guide.

NOTE
When both parent unit and app are viewing the camera simultaneously, the video quality will be optimised to deliver the best possible viewing result.



PROTECT YOUR PRIVACY AND ONLINE SECURITY

Vtech cares about your privacy and peace of mind. That's why we've put together a list of industry-recommended best practices to help keep your wireless connection private and your devices protected when online. We recommend you carefully review and consider complying with the following tips.

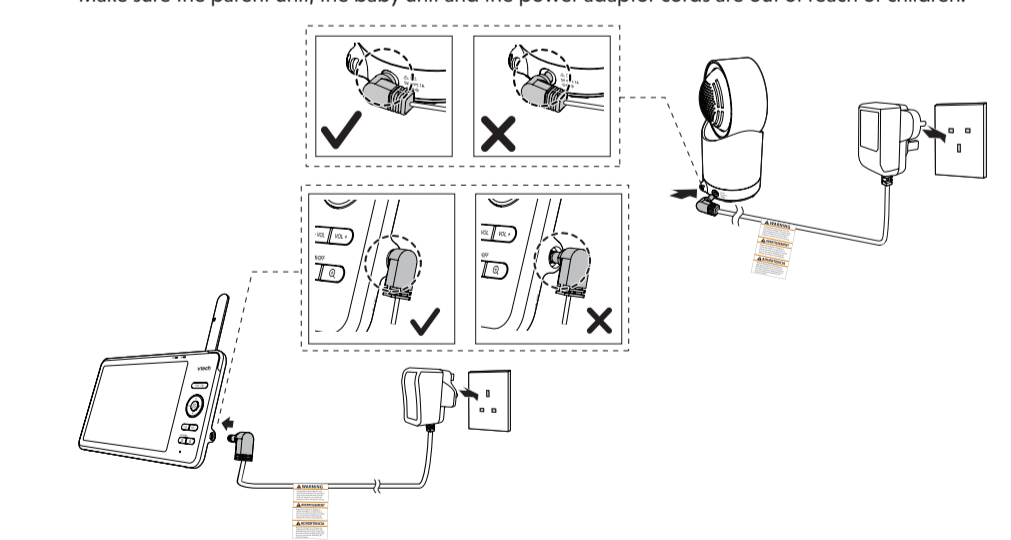
- Ensure your wireless connection is secure.
 - Before installing a device, ensure your router's wireless signal is encrypted by selecting the "WPA2-PSK with AES" setting in your router's wireless security menu.
- Change default settings.
 - Change your wireless router's default wireless network name (SSID) to something unique.
 - Change default passwords to unique, strong passwords: A strong password:
 - is at least 10 characters long—
 - is complex.
 - Does not contain dictionary words or personal information.
 - Contains a mix of uppercase letters, lowercase letters, special characters and numbers.
- Keep your devices up to date.
 - Download security patches from manufacturers as soon as they become available. This will ensure you are always using the latest security updates.
 - If the feature is available, enable automatic updates for future releases.
- Disable Universal Plug and Play (UPnP) on your router.
 - UPnP enabled on a router can limit the effectiveness of your firewall by allowing other network devices to open inbound ports without any intervention or approval from you. A virus or other malware program could use this function to compromise security for the entire network.

- For more information on wireless connections and protecting your data, please review the following resources from industry experts:
- Federal Communications Commission: Wireless Connections and Bluetooth Security Tips – www.fcc.gov/consumers/guides/how-protect-yourself-online.
 - U.S. Department of Homeland Security: Before You Connect a New Computer to the Internet – www.us-cert.gov/ncsr/tips/STIS-003.
 - Federal Trade Commission: Using IP Cameras Safely – <https://www.consumer.ftc.gov/articles/0382-using-ip-cameras-safely>.
 - Wi-Fi Alliance: Discover Wi-Fi Security – <http://www.wi-fi.org/discover-wi-fi-security>.

CONNECT, CHARGE AND POWER ON THE BABY MONITOR

Connect the baby monitor

- NOTES**
- The rechargeable battery in the parent unit is built-in.
 - Use only the power adaptors supplied with this product.
 - Make sure the parent unit and the baby unit are not connected to an electronically controlled electric outlet.
 - Connect the power adaptors in a vertical or floor mount position only. The adaptor prongs are not designed to hold the weight of the parent unit and the baby unit, so do not connect them to any ceiling, under-the-table, or cabinet outlets. Otherwise, the adaptors may not properly connect to the outlets.
 - Make sure the parent unit, the baby unit and the power adaptor cords are out of reach of children.



Slide the switch to **ON** to power your baby unit on.

- NOTES**
- When powering up, the baby unit's status LED turns on. It will turn off after a while and remains off.
 - The status LED is set to off by default.

NOTE:
Camera lens and surface may get warm during normal operation.

Charge the parent unit battery before use

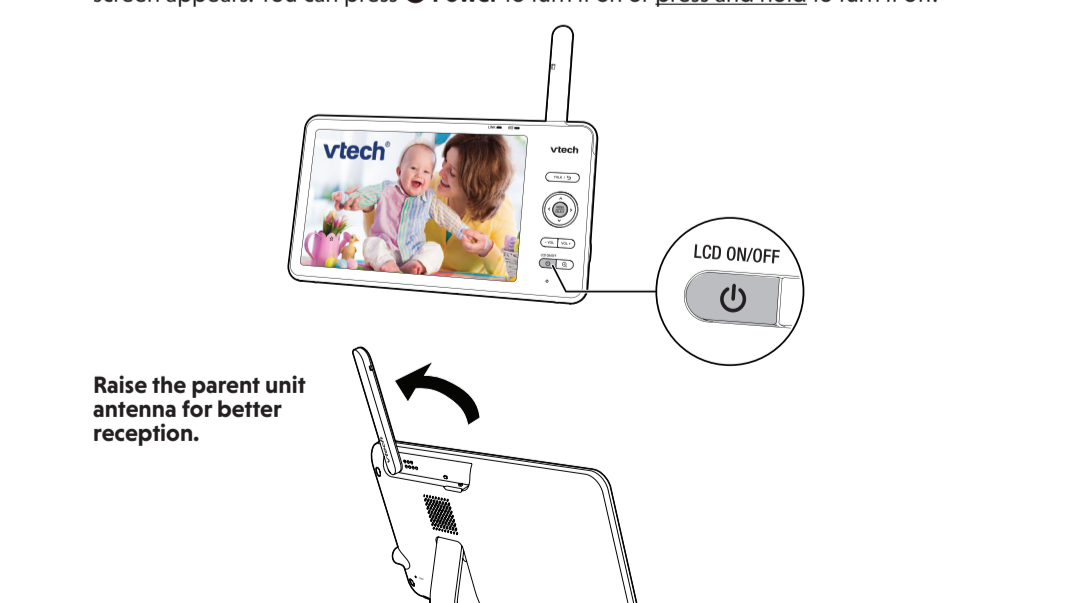
The parent unit operates on an internal rechargeable battery or AC power. To continuously monitor your baby, keep the parent unit connected to AC power.

- NOTES**
- Before using the baby monitor for the first time, charge the parent unit battery for 12 hours. When the parent unit battery is fully charged, the battery icon becomes solid.
 - The standby time varies depending on your actual use.

The battery icon indicates the battery status (see the following table).

| BATTERY INDICATORS | BATTERY STATUS | ACTION |
|--------------------|---|--|
| | The battery has very little charge and may be used for only a short time. | Charge without interruption (about 30 minutes). |
| | The battery is fully charged. | To keep the battery charged, connect it to AC power when in use. |

The parent unit turns on automatically after connecting to the power socket, and the welcome screen appears. You can press **Power** to turn it on or **press and hold** to turn it off.



Raise the parent unit antenna for better reception.

PARENT UNIT ICONS

| Main Menu | Options | Main Menu | Options | Main Menu | Options | Status icons |
|-------------------------------------|--|-------------------------|--|------------------------|--|--|
| Night light | <ul style="list-style-type: none"> Turn on or turn off night light. Select a night light colour. Customized colour is available if your baby unit is paired with MyVtech Baby Pro app. Adjust night light brightness. Set the brightness to Auto ambient adaptive. The room is bright, the night light will be brighter; the room is dim, the night light will be less bright. Set a Timer to turn the night light off. | General settings | <ul style="list-style-type: none"> Connect to home Wi-Fi network. Connect mobile phone. Turn on parking mode for a moment of privacy. Adjust baby unit speaker volume. Adjust parent unit screen brightness. Set screen lock timer. Set screen off timer. Set the Sound Sensitivity level for auto screen on. Reset Settings, Software Update. | Alerts Settings | <ul style="list-style-type: none"> Adjust alerts volume level. Turn on/off temperature alert. Select maximum and minimum temperature for alert range. Turn on/off motion detection alert. Adjust Motion Sensitivity level to activate parent unit screen and speaker. Turn on/off low battery alert. Turn on/off no link alert. | <ul style="list-style-type: none"> Direct mode The parent unit and baby unit connect to each other directly. Red bars indicate no connection. Router mode The parent unit and baby unit connect via the home Wi-Fi network. The red icon(s) on the baby unit or parent unit, indicates no connection between the respective unit(s) and the router. Touch screen is locked. Night vision is turned on. Motion detection alert is turned on. Melodies and soothing sounds are playing. Night light is turned on. Auto night light brightness is activated. Temperature alert is turned on. Parent unit is muted. Temperature Low battery indicator Battery level indicator |
| Melodies and soothing sounds | <ul style="list-style-type: none"> Play/Stop lullaby. Select to play all melodies, or play one of the five melodies or five soothing sounds. Set the timer to stop playing after 15, 30 or 60 minutes, or play non-stop. Adjust the play volume level. | Help and info | <ul style="list-style-type: none"> Support information System information Privacy information | Alert icons | <ul style="list-style-type: none"> Displays when parent unit's battery is low and needs charging. Displays when motion exceeding the set sensitivity level is detected at a baby unit. Displays when baby unit detected temperature reaches or exceeds the set maximum. Displays when baby unit detected temperature at or lower than the set minimum. | |

All rights reserved. 12/22, RM7768HD, OSO, UK, © 2022 Vtech Telecommunications, Inc. Specifications are subject to change without notice.

Android™ and Google Play™ are trademarks of Google Inc. App Store is a trademark of Apple Inc., registered in the U.S. and other countries. © 2022 Vtech Telecommunications, Inc.

IOS is a trademark or registered trademark of Cisco in the U.S. and other countries. The Heart Beat sound file was created by Zambedes, and is used under the Creative Commons license. The Crickets At Night sound file was created by Mike Koenig, and is used under the Creative Commons license. The Steam Noise sound file was created by Caroline Ford, and is used under the Creative Commons license. The background noise sound file was created by Caroline Ford, and is used under the Creative Commons license. Credits:

| Frequency | Channels | LCD | Normal effective range | Power requirement |
|-----------------|----------|---------------|---|--|
| 2412 - 2472 MHz | 13 | 7" Colour LCD | Actual operating range may vary according to environmental conditions (FIS 1280x800 pixels) | Baby unit power adaptor: Output: 5V DC, 1A Parent unit power adaptor: Output: 5V DC, 2A |
| | | | | Parent unit battery: 3.7V 5000mAh, 18.5Wh Lithium-ion battery |

TECHNICAL SPECIFICATIONS

DOWNLOAD APP FOR MOBILE ACCESS

1 App installation

a) From parent unit

- NOTE**
- Before installing the app, please connect your baby monitor to your Wi-Fi network.
- Press **MENU** on the parent unit, go to > >

- Press **MENU** when the parent unit is idle.
- Go to > > **Connect Mobile Phone**.
- Scan the QR code in the parent unit to download the app into your mobile device.

b) From app store

- Browse the App Store or the Google Play store .
- Search for the mobile app with the keyword "myvtech baby pro".
- Download and install the **MyVtech Baby Pro** mobile app to your mobile device.

OR

Scan the QR code on the right to get the app.

- NOTE**
- Make sure your mobile device meets the minimum requirement for the mobile app.

Minimum requirement

- The mobile app is compatible with:
- Android™ 6.0 or later; and
 - iOS 12 or later.

2 Set up user account

In your mobile device:

- Tap to run the mobile app, and then create a user account.
- We recommend that you use common webmail services, such as Google Gmail for registration of your user account. Check your email (and Spam folder), and activate your new camera account via the email link, then sign in to your account.

3 Add camera

Follow the instructions in the mobile app to pair the camera. Tap , then **Add Camera** in the mobile app to get started.



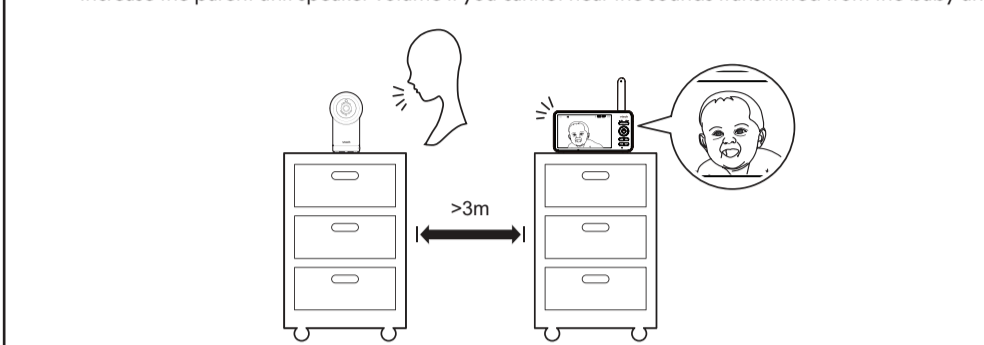
TEST THE SOUND LEVEL AND POSITION THE BABY MONITOR

Testing the sound level of the baby monitor

- NOTE**
- This baby monitor is intended as an aid. It is not a substitute for proper adult supervision, and should not be used as such.

- CAUTION**
- For hearing protection, make sure the parent unit is more than 3 metres away from the baby unit. If you hear any feedback noise from the parent unit, move the parent unit further until the noise stops. You can also press **VOL -** on the parent unit to lower or mute the noise.

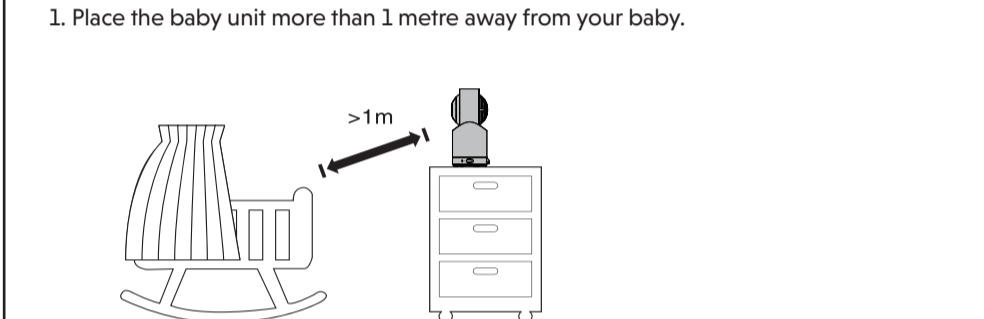
- TIP**
- Increase the parent unit speaker volume if you cannot hear the sounds transmitted from the baby unit.



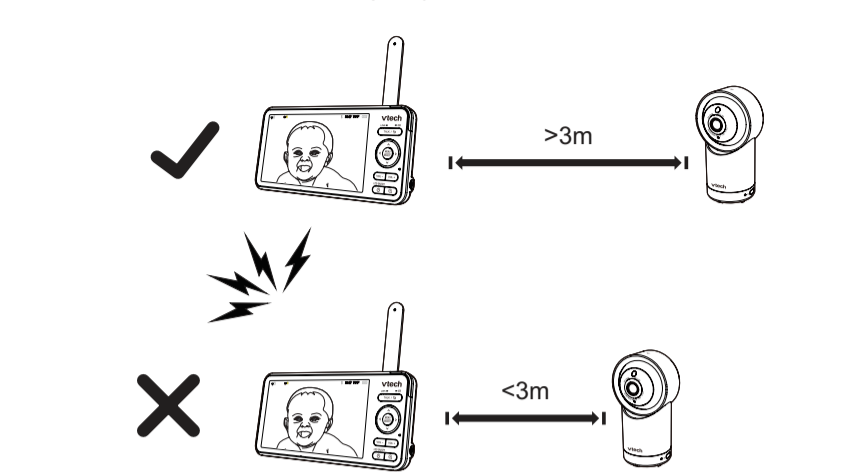
Positioning the baby monitor

- CAUTION**
- Keep the baby unit out of the reach of your baby. Never place or mount the baby unit inside the baby's cot or playpen.

- Place the baby unit more than 1 metre away from your baby.



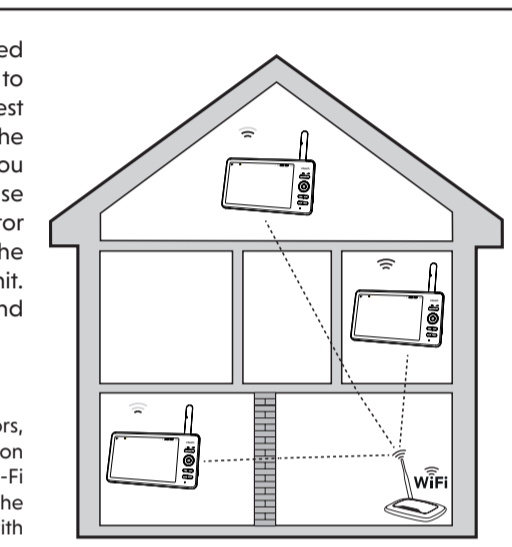
- To avoid causing feedback noise from your baby monitor:
 - Make sure your baby unit and parent unit are more than 3 metres apart; OR
 - Turn down the volume of your parent unit.



TEST THE LOCATION FOR THE BABY UNIT

If you plan to install your baby unit in a designated location, and use your home Wi-Fi network to connect your video monitor, you need to test which of your selected monitoring areas within the house have good Wi-Fi signal strength. After you have powered on your parent unit, you can use your parent unit's Wi-Fi signal strength indicator to assist in checking. Once you have identified the suitable location, you can install your baby unit. Adjust the distance between your baby unit and the Wi-Fi router if needed.

- TIP**
- Depending on surroundings and obstructing factors, such as the effect distance and internal walls have on signal strength, you may experience reduced Wi-Fi signal. To improve the Wi-Fi signal strength, adjust the distance or direction of your parent unit. Check with your parent unit again.



BASIC OPERATION

After powering up your video monitor, the parent unit streams live video in direct mode. We recommend you follow the instructions on screen to set up home Wi-Fi network with your monitor for functionality enhancements and mobile access. See **Auto software and firmware update** and **Download app for mobile access** in this quick start guide.

Use the Control Panel

- Tap the screen to open and use the Control Panel.
- Tap to lock the panel, and tap to unlock it.
- Tap to enter the main menu and tap the menu options directly to control the night light, play lullabies, set the parent unit, etc.

Use the Main Menu

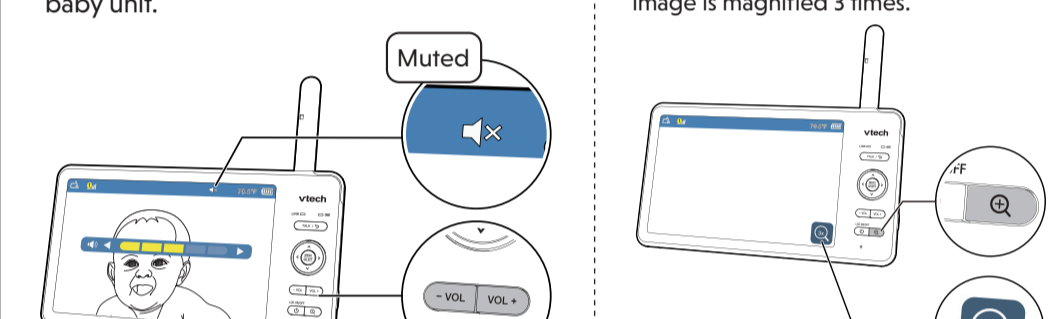
Press **MENU** on the parent unit to enter the main menu, choose a menu item, or save a setting. You can use the parent unit menu for advanced settings or operations, such as to play or stop the baby unit lullaby, or adjust the baby unit motion sensitivity.

While in the menu:

- Press to scroll among the menu options.
- Press **SELECT** to select an item.
- Press **TALK** / to return.

Adjust speaker volume

Press **VOL -** / **VOL +** to adjust the parent unit speaker volume level received from the baby unit.



Zoom

Press to zoom in or out in a fixed zoom sequence. indicates that the image is magnified 3 times.

Talk to your baby via the baby unit

- Press and hold the **TALK** key.
- When the displays on screen, speak to your parent unit. Your voice is transmitted to the baby unit.
- When finished talking, release the **TALK** key to hear your baby again.



Turn on/off the parent unit screen

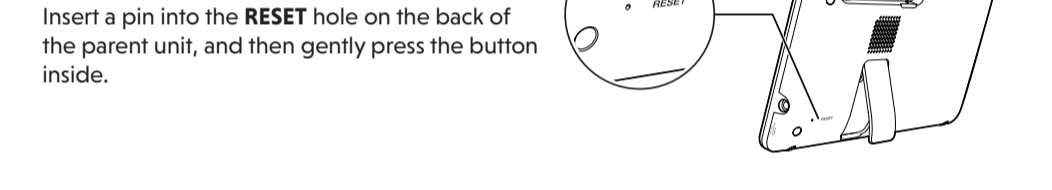
You can turn on or turn off the parent unit screen without powering off the unit. You will still hear sounds from the baby unit.

- Press **LCD ON/OFF** on the parent unit to turn off the screen.
- Press any key on the parent unit to turn the screen on again.



TIP

To restore to the default settings or reset the Wi-Fi connection, you can reset the parent unit by pressing the **RESET** key at the back of the unit.



Pan and Tilt the Camera

Use the arrow keys or the control panel on the parent unit to pan and tilt the camera.

- Press to move the camera leftward, rightward, upward and downward;
- Press and hold to move the camera continuously.

OR

- Scroll up/down once or continuously on the parent unit screen to tilt the camera.
- Swipe left/right once or continuously on the screen to pan the camera.



Parking mode

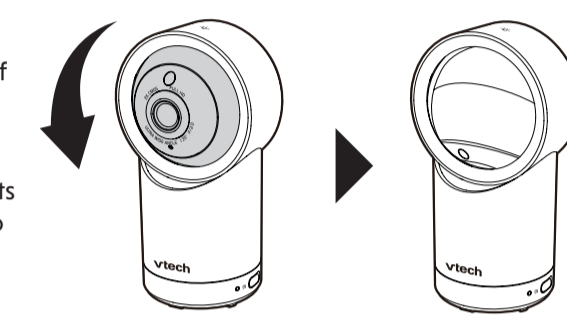
Designed for extra peace of mind, turn on Parking Mode for a moment of privacy.

When turned on, baby unit will fold into the parking position and disable its camera's audio transmission and video monitoring.

In Parking Mode, motion recording, motion detection, and sound detection will be temporarily unavailable.

Activate Parking Mode:

- Press **MENU** or tap the screen, then tap to enter the main menu.
- Go to **General settings** menu.
- Select to turn on the parking mode.
 - To deactivate Parking Mode and resume normal operation, press or tap on Parent Unit.



NIGHT LIGHT

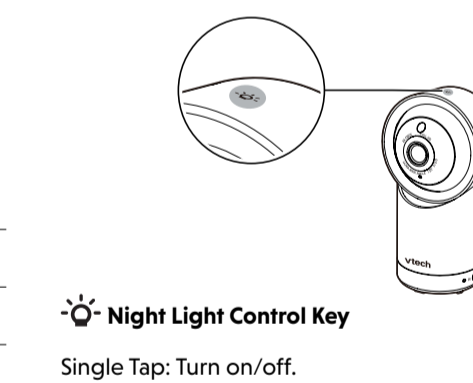
You can control the night light remotely on the parent unit or directly on the baby unit.

On the parent unit:

- Press **MENU**.
- Press **MENU** or to go to **Night Light** menu.
- Press or to choose below options:

- Turn on/off night light.
- Change night light colour.
- Adjust night light brightness.
- Set night light timer.

On the baby unit:



GENERAL PRODUCT CARE

To keep this product working well and looking good, follow these guidelines:

- Avoid placing it near heating appliances and devices that generate electrical noise (for example, motors or fluorescent lamps).
- DO NOT expose it to direct sunlight or moisture.
- Avoid dropping the product or treating it roughly.
- Clean with a soft damp cloth.
- DO NOT immerse the parent unit and the baby unit in water and do not clean under running water.
- DO NOT use cleaning spray or liquid cleaners.
- Make sure the parent unit and the baby unit are dry before you connect them to the mains again.

STORAGE

When you are not going to use the video monitor for some time, store the parent unit, the baby unit and the adaptors in a cool, dry place.

FREQUENTLY ASKED QUESTIONS

Below are the questions most frequently asked about the video monitor.

| | |
|---|--|
| Can I turn the parent unit display screen off but keep hearing sounds from the baby unit? | Yes, press LCD ON/OFF on the parent unit to turn off the screen. The parent unit display will also dim automatically after being inactive for some time. In both instances, you will still be able to hear all sounds from the baby unit. Press any key to turn the screen back on. |
| Why is the baby unit not responding normally? | Try the following (in the order listed) for a common cure: 1. Disconnect the power to the baby unit. 2. Wait a few minutes before connecting power back to the baby unit. 3. Reboot the parent unit. |
| Why is my screen in black and white? | The baby unit has a light sensor that measures ambient light. When the ambient light is dim, such as during night time or in a dark room, the baby unit activates its infrared LEDs, and displays the camera images in black and white night vision. |
| Why does my baby unit show offline? Why is the connection lost every now and then? | The baby unit may have lost connection to the Wi-Fi router. Check your network and router settings. Other electronic products may cause interference with your baby unit. Try installing your baby unit as far away from these electronic devices as possible. |
| Why can't I hear a sound/Why can't I hear my baby crying? | The parent unit speaker volume may be too low. Press VOL + on the parent unit to increase the volume. You may have set a low sound sensitivity level. Set the sound sensitivity to a higher level. For details, go to www.vtechphones.eu for online help topics. |

MOUNT THE BABY UNIT (OPTIONAL)

NOTES

- Check for reception strength and camera angle of the baby unit before drilling the holes.
- The types of screws and wall plugs you need depend on the composition of the wall. You may need to purchase the screws and wall plugs separately to mount your baby unit.

- Place the wall mount bracket on a wall and then use a pencil to mark two holes in parallel. Remove the wall mount bracket and drill two holes in the wall (5.5 mm drill bit).

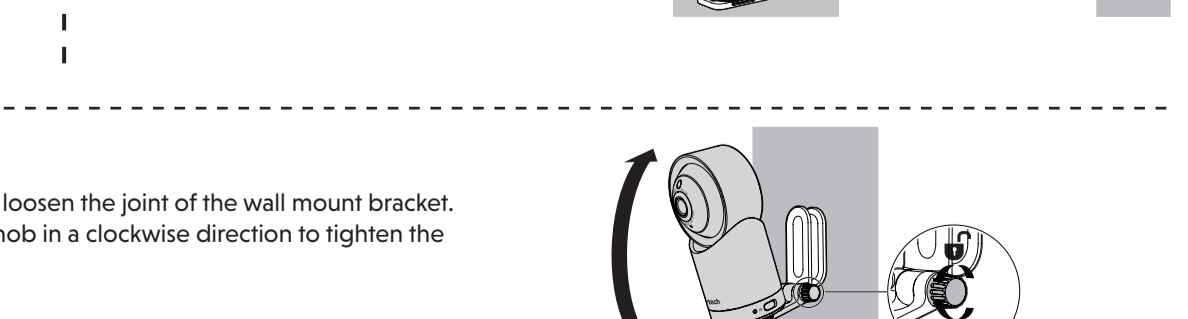
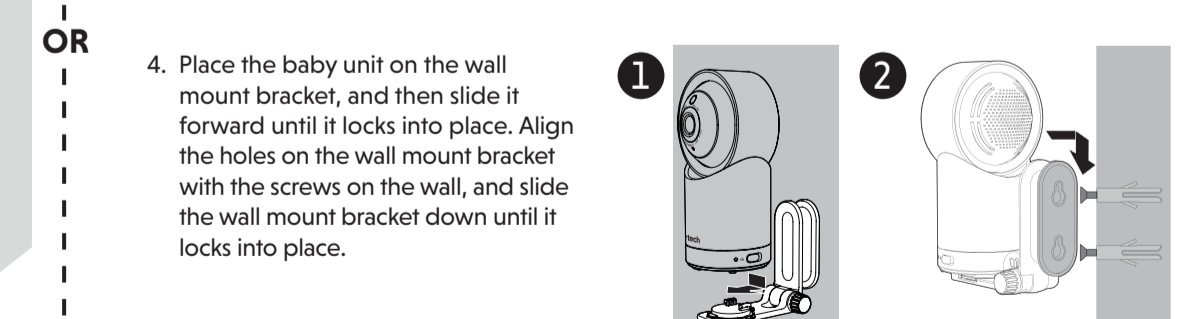
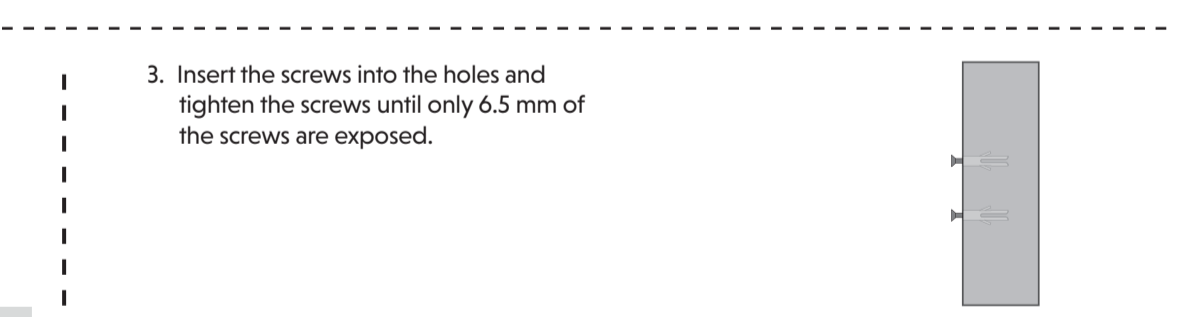
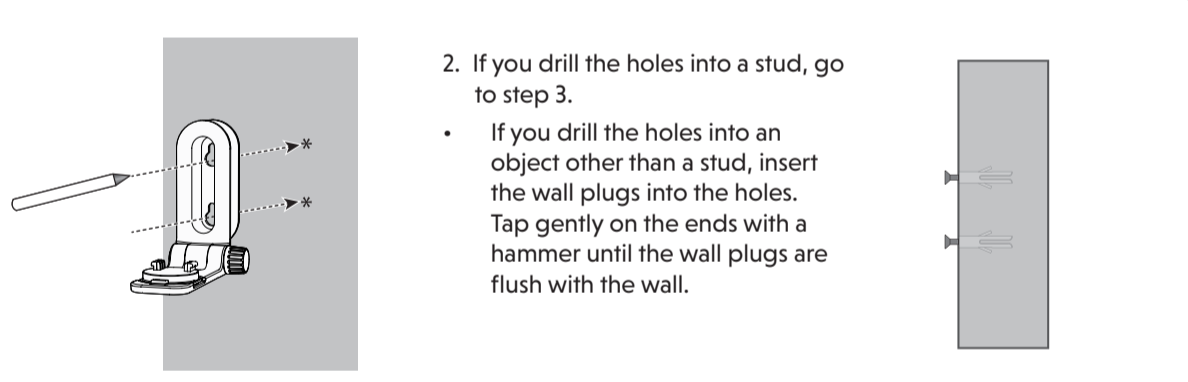
- Align the wall mount bracket and screws with the holes in the wall as shown. Tighten the screw in the middle hole first, so that the wall mount bracket position is fixed. You can tighten the other screw in the top hole.

- Place the baby unit on the wall mount bracket, and then slide it forward until it locks into place. Connect the power adaptor to the baby unit.

- Insert the screws into the holes and tighten the screws until only 6.5 mm of the screws are exposed.

- Place the baby unit on the wall mount bracket, and then slide it forward until it locks into place. Align the holes on the wall mount bracket with the screws on the wall, and slide the wall mount bracket down until it locks into place.

- You can maximise your baby unit viewing angles by tilting the wall mount bracket. Hold the baby unit, and then rotate the knob in an anticlockwise direction. This will loosen the joint of the wall mount bracket. Tilt your baby unit up or down to adjust to your preferred angle. Then, rotate the knob in a clockwise direction to tighten the joint and secure the angle.



CUSTOMER SERVICE AND PRODUCT WARRANTY

PRODUCT WARRANTY

- Thank you for choosing this quality product from Vtech.
- The product detailed above is covered by a one year warranty from the date of purchase, against any defects in materials or workmanship.
 - The product may be returned to the place of purchase. Alternatively the product can be returned to Vtech Electronics Europe Plc (see address below), with proof of purchase, without proof of purchase no replacement will be provided.
 - Vtech Electronics Europe Plc will examine the product and if it is found to be defective due to faulty materials or workmanship, will replace the product at their discretion.
 - If the product covered by this warranty is damaged due to misuse, modification or unauthorized repair, or because of faulty batteries, battery discharge or incorrect electrical connections, then this warranty becomes void.
 - This warranty is personal to the original purchaser and is not transferable.
 - Breakages to the LCD screen are not covered by the warranty.
 - Products returned to Vtech Electronics Europe Plc, should be sent to the address shown below and packed carefully to avoid damage in transit. Please do not include batteries or adaptors. Please include details of the fault together with your name and address, contact phone number and/or email address.
 - To keep an online record of your warranty, please register your product online at www.vtech.co.uk/clbvtech
- Vtech Electronics Europe Plc, c/o XPO Logistics, Warehouse 350, Cat & Fiddle Lane, West Hallam, DE7 6HE
- THIS WARRANTY IS OFFERED AS AN EXTRA BENEFIT AND DOES NOT AFFECT CONSUMERS' STATUTORY RIGHTS.**
- This warranty is valid for the UK and Ireland only. For products purchased outside the UK and Ireland, please contact your local distributor or place of purchase.

IMPORTANT

Please retain this booklet with your sales receipt as proof of the date of purchase.

Customer Service

Please visit www.vtechphones.eu to contact our Customer Services Department.

DISPOSAL OF BATTERIES AND PRODUCT

- The crossed-out wheeled bin symbols on products and batteries, or on their respective packaging, indicates they must not be disposed of in domestic waste as they contain substances that can be damaging to the environment and human health.
- The chemical symbols Hg, Cd or Pb, where marked, indicate that the battery contains more than the specified value of mercury (Hg), cadmium (Cd) or lead (Pb) set out in Battery Directive (2006/66/EC).
- The solid bar indicates that the product was placed on the market after 13th August 2005.
- Help protect the environment by disposing of your product or batteries responsibly.

DECLARATION OF CONFORMITY

This product is intended for use within Europe and UK. This equipment complies with the essential requirements to EU's Radio Equipment Directive (2014/53/EU) and the UK's Radio Regulations 2017 on radio systems and telecommunication equipment.

Vtech Telecommunications Ltd. hereby declares that this Video Baby Monitor RM768HD is in compliance with the essential requirements and other relevant provisions of EU's Radio Equipment Directive (2014/53/EU) and UK's Radio Equipment Regulations 2017.

The Declaration of Conformity for the RM768HD is available from www.vtechphones.eu.

Manufacturer: Vtech Telecommunications Ltd.
23/F, Tai Ping Industrial Centre, Block 1, 57 Ting Kok Road, Tai Po, Hong Kong.
Importer: Vtech Electronics Europe Plc.
Napier Court, Abingdon Science Park, Abingdon, Oxon, OX14 3YT.

