



VM919HD

Full Colour Pan and Tilt HD Video Monitor



Quick start guide

IMPORTANT SAFETY INSTRUCTIONS

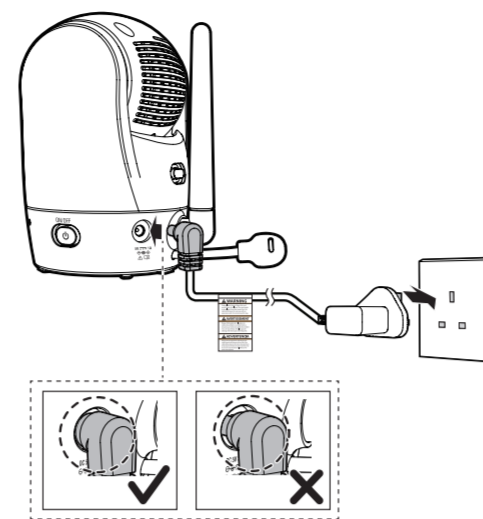
- The applied nameplate is located at the bottom of the baby unit's base.
- When using your equipment, basic safety precautions should always be followed to reduce the risk of fire, electric shock and injury, including the following:
- Follow all warnings and instructions marked on the product.
 - Adult setup is required.
 - CAUTION:** Do not install the baby unit at a height above 2 metres.
 - This product is not a substitute for adult supervision of the infant. Supervising the infant is the responsibility of the parent or carer. This product could cease operating, and therefore you should not assume it will continue working properly for any given period of time. Further, this is not a medical device and should not be used as such. This product is intended to assist you in supervising your baby.
 - Do not use this product near water, for example, near to a bath, sink, swimming pool or shower.
 - CAUTION:** Use only the battery provided. There may be a risk of explosion if a wrong type of battery is used for the parent unit. The battery cannot be subjected to high or low extreme temperature and low air pressure, high altitude during use, storage or transportation. Disposal of battery into fire or a hot oven, or mechanically crushing or cutting of the battery can result in an explosion. Leaving the battery in an extremely high temperature surrounding environment can result in an explosion or the leakage of flammable liquid of gas. Battery subjected to extremely low air pressure may result in an explosion or the leakage of flammable liquid or gas. Dispose of used battery according to the instructions.
 - Use only the power adaptors included with this product. Incorrect power adaptor polarity or voltage can seriously damage the product.
 - Power adaptor information:**
Parent unit output: 5V DC 2A
Vtech Telecommunications Ltd.
Model: VT05EEU05200 (EU), VT05EUK05200 (UK).
Baby unit output: 5V DC 1A.
Vtech Telecommunications Ltd.
Model: VT05EEU05100 (EU), VT05EUK05100 (UK).
 - Rechargeable battery information:**
3.7V 500mAh, 18.5Wh Lithium-ion battery
Zhuohai Great Power Energy Co., Ltd.
Model: GSP806090-5AH-3.7V-LS1P
 - The power adaptors are intended to be correctly oriented in a vertical or floor mount position. The prongs are not designed to hold the plug in place if it is plugged into a ceiling, under-the-table or cabinet outlet.
 - For pluggable equipment, the socket-outlet should be installed near the equipment and should be easily accessible.
 - Unplug this product from the wall outlet before cleaning. Do not use liquid or aerosol cleaners. Use a damp cloth for cleaning.
 - Do not cut off the power adaptors to replace them with other plugs, as this causes a hazardous situation.
 - Do not allow anything to rest on the power cords. Do not install this product where the cords may be walked on or crimped.
 - This product should be operated only from the type of power source indicated on the marking label. If you are not sure of the type of power supply in your home, consult your dealer or local power company.
 - Do not overload wall outlets or use an extension cord.
 - Do not place this product on an unstable table, shelf, stand or other unstable surfaces.
 - This product should not be placed in any area where proper ventilation is not provided. Slots and openings in the back or bottom of this product are provided for ventilation. To protect them from overheating, these openings must be blocked by placing the product on a soft surface such as a bed, sofa or rug. This product should never be placed near or over a radiator or heat source.
 - Never push objects of any kind into this product through the slots because they may touch dangerous voltage points or create a short circuit. Never spill liquid of any kind on the product.
 - To reduce the risk of electric shock, do not disassemble this product, but take it to an authorized service facility. Opening or removing parts of the product other than specified access doors may expose you to dangerous voltages or other risks. Incorrect reassembling can cause electric shock when the product is subsequently used.
 - You should test the sound reception every time you turn on the units or move one of the components.
 - Periodically examine all components for damage.
 - There is a very low risk of privacy loss when using certain electronic devices, such as baby monitors, cordless telephones, etc. To protect your privacy, make sure the product has never been used before purchase, reset the baby monitor periodically by powering off and then powering on the units, and power off the baby monitor if you will not use it for some time.
 - Children should be supervised to ensure that they do not play with the product.
 - The product is not intended for use by persons (including children) with reduced physical, sensory or mental capabilities, or lack of experience and knowledge, unless they have been given supervision or instruction concerning use of the appliance by a person responsible for their safety.
- SAVE THESE INSTRUCTIONS**
- Cautions**
- Use and store the product at a temperature between 0°C and 40°C.
 - Do not expose the product to extreme cold, heat or direct sunlight. Do not put the product close to a heating source.
 - Batteries should not be exposed to excessive heat such as bright sunshine or fire.
 - Warning—Strangulation Hazard—**Children have STRANGLED in cords. Keep this cord out of the reach of children (more than 0.9m away). Do not remove this tag.
 - Never place the baby unit(s) inside the baby's crib or playpen. Never cover the baby unit(s) or parent unit with anything such as a towel or a blanket.
 - Other electronic products may cause interference with your baby monitor. Try installing your baby monitor as far away from these electronic devices as possible: wireless routers, radios, cellular telephones, intercoms, room monitors, televisions, personal computers, kitchen appliances and cordless telephones.
- Precautions for users of implanted cardiac pacemakers**
Cardiac pacemakers (applies only to digital cordless devices): Wireless Technology Research, LLC (WTR), an independent research entity, led a multidisciplinary evaluation of the interference between portable wireless devices and implanted cardiac pacemakers. Supported by the U.S. Food and Drug Administration, WTR recommends to physicians that:
- Pacemaker patients**
- Should keep wireless devices at least six inches from the pacemaker.
 - Should NOT place wireless devices directly over the pacemaker, such as in a breast pocket, when it is turned ON.
- WTR's evaluation did not identify any risk to bystanders with pacemakers from other persons using wireless devices.
- Electromagnetic fields (EMF)**
This Vtech product complies with all standards regarding electromagnetic fields (EMF). If handled properly and according to the instructions in this user's manual, the product is safe to be used based on scientific evidence available today.

1 CONNECT THE BABY MONITOR

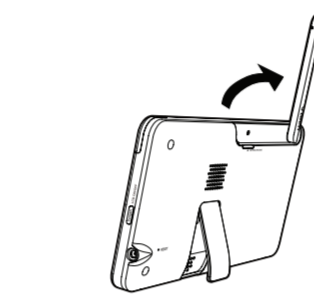
Connect the baby unit

NOTES

- The rechargeable battery in the parent unit is built-in.
- Use only the power adaptors supplied with this product.
- Make sure the parent unit and the baby unit are not connected to the switch controlled electric outlets.
- Connect the power adaptors in a vertical or floor mount position only. The adaptors' prongs are not designed to hold the weight of the parent unit and the baby unit, so do not connect them to any ceiling, under-the-table, or cabinet outlets. Otherwise, the adaptors may not properly connect to the outlets.
- Make sure the parent unit, the baby unit and the power adaptor cords are out of reach of children.

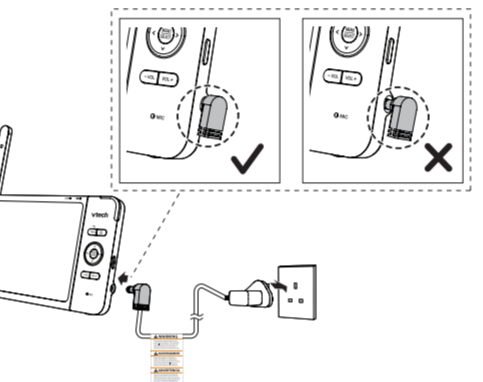


Raise the parent unit antenna for better reception



Charge the parent unit battery before use

When you connect and turn the parent unit on, the battery will charge automatically.



1 CONNECT THE BABY MONITOR (CONT'D)

NOTES

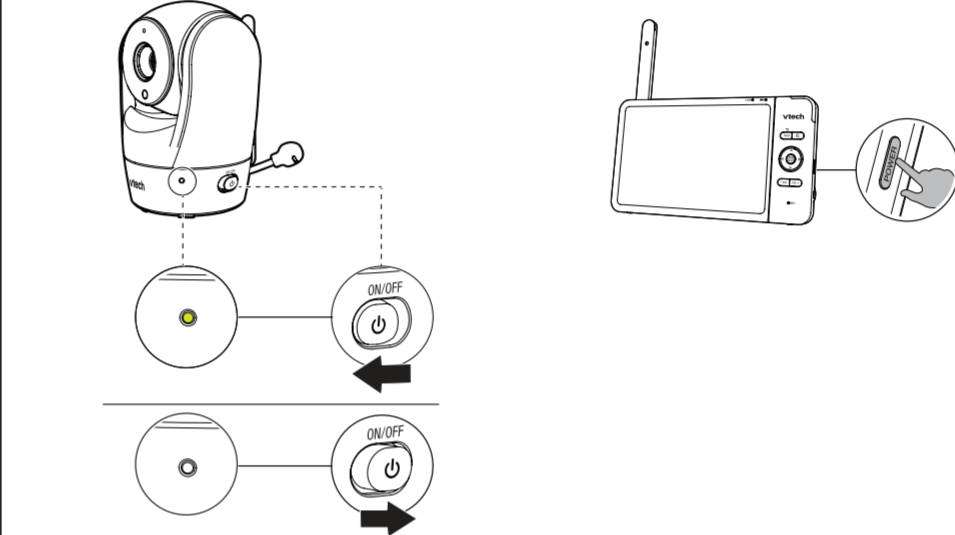
- Before using the baby monitor for the first time, charge the parent unit battery for 12 hours. When the parent unit battery is fully charged, the battery icon becomes solid.
- It takes longer to charge the battery when the parent unit is turned on. To shorten the charging time, turn the parent unit off while charging.
- The standby time varies depending on the sensitivity level you set, your actual use and the age of the battery.

The battery icon indicates the battery status (see the following table).

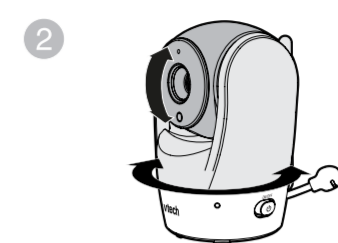
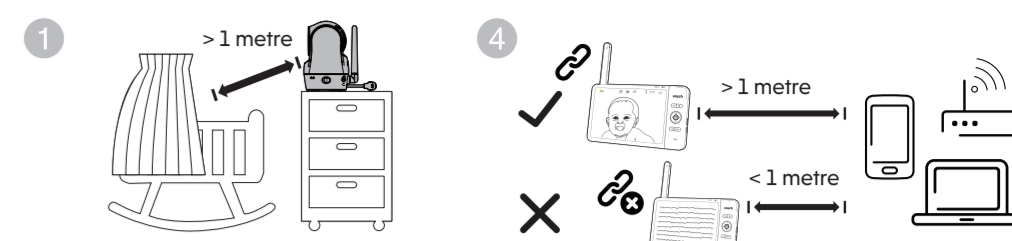
BATTERY INDICATORS	BATTERY STATUS	ACTION
The screen displays	The battery has very little charge and may be used for only a short time.	Charge without interruption (about 30 minutes).
The battery icon becomes solid	The battery is fully charged.	To keep the battery charged, connect it to AC power when not in use.

2 POWER ON OR OFF THE BABY MONITOR

- Slide the switch to **ON** to power on your baby unit.
- After the parent unit is fully charged, press **POWER** until the welcome screen appears.



3 POSITIONING THE BABY MONITOR

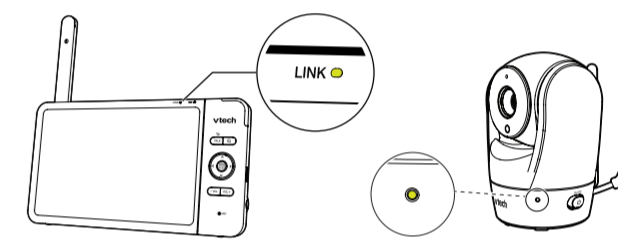


- Position the baby monitor at least 1 metre away from devices such as wireless routers, microwaves, mobile phones and computers.
- CAUTION: To avoid interference from other electronic devices, place your baby monitor at least 1 metre away from devices such as wireless routers, microwaves, mobile phones and computers.
- CAUTION: The default volume of your parent unit is level 3, and the maximum volume is level 5. If you experience feedback from your baby monitor while positioning:
 - Make sure your baby unit and parent unit are more than 1 meter apart, OR
 - Lower the volume of your parent unit.

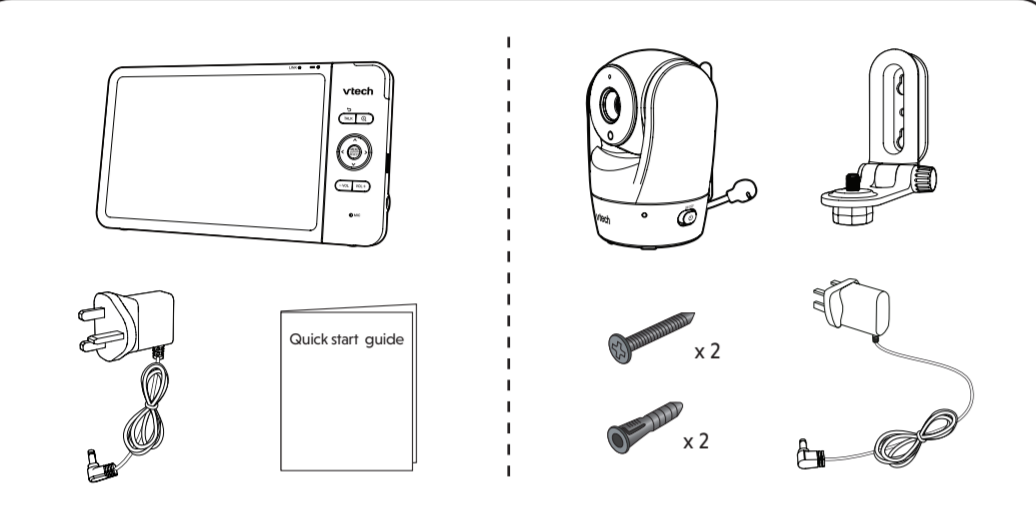
4 STATUS CHECK

Once you power on both your baby unit and parent unit, your parent unit displays images from the baby unit, and the **LINK** LED light turns on.

The baby unit green LED light also turns on.



WHAT'S IN THE BOX



Specifications are subject to change without notice. © 2022 Vtech Communications, Inc. All rights reserved. 07/22_VM919HD_UK_GSG_V2

BASIC OPERATION - PARENT UNIT

Adjust speaker volume
Pressing **-VOL** / **VOL+** adjusts the parent unit speaker volume level received from the baby unit.

Muted

Zoom
Press **Q** to zoom in or out.

Talk to your baby via the baby unit

- Press and hold the **TALK** key.
- When the icon displays on screen, speak to your parent unit. Your voice is transmitted to the baby unit.
- When finished talking, release the **TALK** key to hear your baby again.

Turn on/off the parent unit screen
You can turn on or turn off the parent unit screen without powering off the parent unit. You can still hear sound from the baby unit.

- Press **POWER** on the parent unit to turn off the screen.
- Press any keys on the parent unit to turn on the screen again.

OVERVIEW - PARENT UNIT

- LINK LED light**
- LED light**
- 3-level sound indicator light**
- TALK**
• Press and hold to talk to the baby unit.
• While in a submenu, press to exit.
- Q**
• Press to zoom in/out.
• When in the main menu, press to go to the **Help & info** page.
- Arrow keys**
• Press to enter the main menu.
• While in a menu, press to select an item, or save a setting.
- VOL/ VOL+**
• Increase or decrease parent unit's volume.
- Microphone**
- POWER key**
- Power jack**
- RESET**
• Force reboot the parent unit.
- Antenna**
- Speaker**
- Stand**

OVERVIEW - BABY UNIT

- Microphone**
- Camera lens**
- Light sensor**
- LED indicator**
- Infrared LEDs**
- ON/OFF switch**
- Speaker**
- Temperature sensor**
• Position the sensor horizontally for optimal usage.
• CAUTION: Do not bend the temperature sensor upward.
- Power jack**
- Threaded socket for wall mounting**
- Pair button**

PARENT UNIT ICONS

Main menu icons

Main menu

Melodies and soothing sounds

Melodies and Soothing Sounds

- Select play all melodies, or play one of the five melodies and four soothing sounds.

Timer

You can also set the timer to stop playing after 15, 30 or 60 minutes, or playing non-stop.

Alerts - Sound, motion and temperature

Sound

- Select sound **Sensitivity** level.
- Turn on/off **Sound Detection Alert**.
- Turn on/off **Auto Wake Up** function. (See **Sound Detection and Auto Wake Up** section)

Motion

- Turn on/off **Motion Alert**.
- Select motion **Sensitivity** level. (See **Motion Detection** section)

Temperature

- Turn on/off **Temperature Alert**. Set the parent unit to beep whenever the room temperature detected by the baby unit falls outside of the set temperature range.
- Select **Minimum** temperature for alert range.
- Select **Maximum** temperature for alert range.
- Select temperature **Format**. Set temperature display in Fahrenheit (°F) or Celsius (°C).

Parent unit settings

- Adjust parent unit screen **Brightness**.
- Turn on/off **Dim Mode**.

Baby unit settings

- Turn on/off baby unit's **Status LED**.
- Select **Field of View**. Choose **Wide angle** or **Standard**.
- Adjust baby unit's speaker **Volume**.

General settings

- Turn on/off **Low Battery Alert Tone**. Set the parent unit to beep when the battery is low.
- Turn on/off **No Link Alert Tone**. Set the parent unit to beep when the link between the parent unit and the baby unit is lost.
- Add baby unit.
- Remove baby unit.

Status icons

- Current view status.
- Night vision feature is activated automatically.
- Motion alert is turned on.
- Sound detection alert is turned on.
- Melodies or soothing sound are turned on.
- Parent unit speaker is muted.
- Temperature alert is turned on.
- Real-time temperature indicator
- Battery status indicator

Alert icons

- Displays when parent unit battery is low and needs charging.
- Displays when motion is detected at a baby unit.
- Displays when sound is detected at a baby unit.
- Baby unit detection temperature exceeds the set maximum.
- Baby unit detection temperature is lower than the set minimum.

