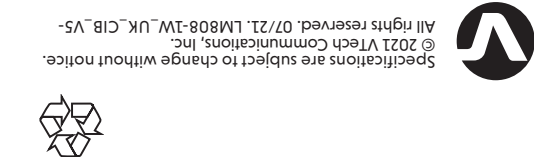
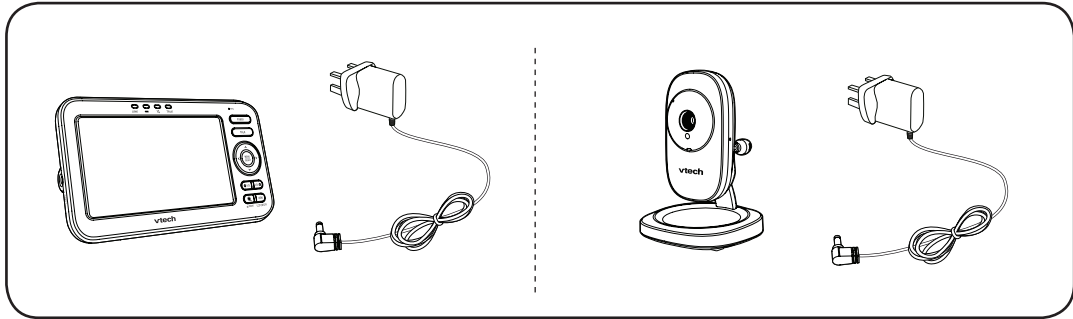




WHAT'S IN THE BOX



Power requirements	
Parent unit: 3.6V Ni-MH Battery	Parent unit power adaptor: Output: 5V DC @ 1A
Nominal effective range	
Actual operating range may vary according to environmental conditions at the time of use	
LCD	5" Colour LCD (WQVGA 480x272 pixels)
Channels	32
Transmit frequency	Parent unit: 2405 - 2475 MHz Baby unit: 2405 - 2475 MHz
Frequency control	Crystal controlled PLL synthesizer

TECHNICAL SPECIFICATIONS

IMPORTANT SAFETY INSTRUCTIONS

The applied nameplate is located at the bottom of the baby unit's base.

- Follow all warnings and instructions marked on the product.
- Adult setup is required.
- CAUTION:** Do not install the baby unit at a height above 2 metres.
- This product is not a substitute for adult supervision of the infant. Supervising the infant is the responsibility of the parent or carer. This product could cease operating, and therefore you should not assume it will continue working properly for any given period of time. Further, this is not a medical device and should not be used as such. This product is intended to assist you in supervising your baby.
- Do not use this product near water, for example, near to a bath, sink, swimming pool or shower.
- CAUTION:** Use only the battery provided. There may be a risk of explosion if a wrong type of battery is used for the parent unit. The battery cannot be subjected to high or low extreme temperature and low air pressure at high altitude during use, storage or transportation. Disposal of battery into fire or a hot oven, or mechanically crushing or cutting or the battery can result in an explosion. Leaving the battery in an extremely high temperature surrounding environment can result in an explosion or the leakage of flammable liquid or gas. Battery subjected to extremely low air pressure may result in an explosion or the leakage of flammable liquid or gas. Dispose of used battery according to the instructions.
- Use only the adaptors included with this product. Incorrect adaptor polarity or voltage can seriously damage the product.
Baby unit power adaptor: Output: 5V DC 1A;
Parent unit power adaptor: Output: 5V DC 1A.
Use only adaptors and battery listed below.

Power adaptor information:
Vtech Telecommunications Limited.
Model : VT05EU05100(UK), VT05EU05100(EU)

Rechargeable battery information:
Corun - Ni-MH AAA900mAh 3.6V
Ni-MH AAA900mAh 3.6V

- The power adaptors are intended to be correctly oriented in a vertical or floor mount position. The prongs are not designed to hold the plug in place if it is plugged into a ceiling, under-the-table or cabinet outlet.
- For pluggable equipment, the socket-outlet should be installed near the equipment and should be easily accessible.
- Unplug this product from the wall outlet before cleaning. Do not use liquid or aerosol cleaners. Use a damp cloth for cleaning.
- Do not cut off the power adaptors to replace them with other plugs, as this causes a hazardous situation.
- Do not allow anything to rest on the power cords. Do not install this product where the cords may be walked on or crimped.
- This product should be operated only from the type of power source indicated on the marking label. If you are not sure of the type of power supply in your home, consult your dealer or local power company.
- Do not overload wall outlets or use an extension cord.
- Do not place this product on an unstable table, shelf, stand or other unstable surfaces.
- This product should not be placed in any area where proper ventilation is not provided. Slots and openings in the back or bottom of this product are provided for ventilation. To protect them from overheating, these openings must not be blocked by placing the product on a soft surface such as a bed, sofa or rug. This product

- Never push objects of any kind into this product through the slots because they may touch dangerous voltage points or create a short circuit. Never spill liquid of any kind on the product.
- To reduce the risk of electric shock, do not disassemble this product, but take it to an authorized service facility. Opening or removing parts of the product other than specified access doors may expose you to dangerous voltages or other risks. Incorrect reassembling can cause electric shock when the product is subsequently used.
- You should test the sound reception every time you turn on the units or move one of the components.
- Periodically examine all components for damage.
- There is a very low risk of privacy loss when using certain electronic devices, such as baby monitors, cordless telephones etc. To protect your privacy, make sure the product has never been used before purchase, reset the baby monitor periodically by powering off and then powering on the units, and power off the baby monitor if you will not use it for some time.
- Children should be supervised to ensure that they do not play with the product.
- The product is not intended for use by persons (including children) with reduced physical, sensory or mental capabilities, or lack of experience and knowledge, unless they have been given supervision or instruction concerning use of the appliance by a person responsible for their safety.

SAVE THESE INSTRUCTIONS

- Use and store the product at a temperature between 0°C and 40°C.
- Do not expose the product to extreme cold, heat or direct sunlight. Do not put the product close to a heating source.
- Batteries should not be exposed to excessive heat such as bright sunshine or fire.

- Warning—Strangulation Hazard—**Children have STRANGLED in cords. Keep this cord out of the reach of children (more than 0.9 m away). Do not remove this tag.
- Never place the baby unit(s) inside the baby's cot or playpen. Never cover the baby unit(s) or parent unit with anything such as a towel or a blanket.
- Other electronic products may cause interference with your baby monitor. Try installing your baby monitor as far away from these electronic devices as possible: wireless routers, radios, cellular telephones, intercoms, room monitors, televisions, personal computers, kitchen appliances and cordless telephones.

Precautions for users of implanted cardiac pacemakers
Cardiac pacemakers (applies only to digital cordless devices): Wireless Technology Research, LLC (WTR), an independent research entity, led a multidisciplinary evaluation of the interference between portable wireless devices and implanted cardiac pacemakers. Supported by the U.S. Food and Drug Administration, WTR recommends to physicians that:

- Pacemaker patients**
 - Should keep wireless devices at least six inches from the pacemaker.
 - Should NOT place wireless devices directly over the pacemaker, such as in a breast pocket, when it is turned ON. WTR's evaluation did not identify any risk to bystanders with pacemakers from other persons using wireless devices.

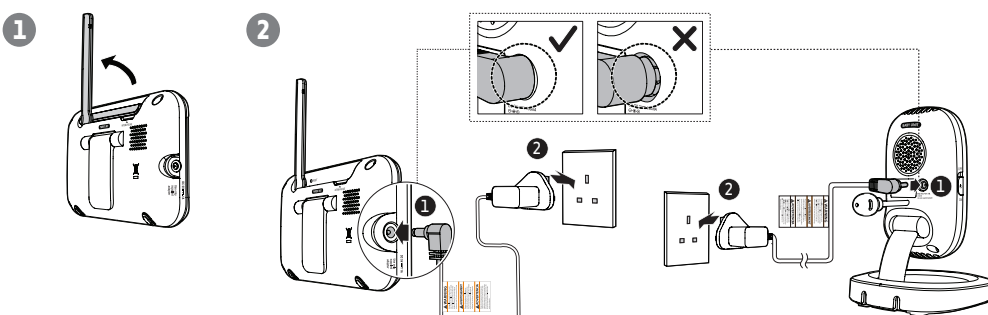
Electromagnetic fields (EMF)
This Vtech product complies with all standards regarding electromagnetic fields (EMF), if handled properly and according to the instructions in this user's manual. The product is safe to be used based on scientific evidence available today.

1 CONNECT AND CHARGE THE BATTERY

Connect the baby monitor

NOTES

- The rechargeable battery in the parent unit is built-in.
- Use only the power adaptors supplied with this product.
- Make sure the baby monitor is not connected to a switch-controlled electric outlet.
- Connect the power adaptors in a vertical or floor mount position only. The adaptors' prongs are not designed to hold the weight of baby monitor, so do not connect them to any outlets, under-the-table, or cabinet outlets. Otherwise, the adaptors may not properly connect to the outlets.
- Make sure the parent unit, the baby unit and the power adaptor cords are out of reach of children.



Charge the parent unit battery

When you have connected the parent unit and installed its battery for the first time or after power outage, the parent unit powers on automatically. The battery icon indicates the battery status (see the following table).

NOTES

- Before using the baby monitor for the first time, charge the parent unit battery for 12 hours. When the parent unit battery is fully charged, the battery icon becomes solid .
- It takes longer to charge the battery when the parent unit is turned on. To shorten the charging time, turn the parent unit off while charging.
- The standby time varies depending on the sensitivity level you set, your actual use and the age of the battery.

BATTERY INDICATORS	BATTERY STATUS	ACTION
The battery icon is off and displays .	Parent unit operates using AC power, and is charging the battery.	
The screen displays the low battery alert and the battery icon becomes .	The battery has very little charge and may be used for only a short time.	Charge without interruption (about 30 minutes).
The battery icon becomes .	The battery is fully charged.	To keep the battery charged, connect it to AC power when not in use.

2 BEFORE USE

NOTE

- This baby monitor should be for use by adults only.
- It is not a substitute for proper adult supervision, and should not be used as such.

Test your baby monitor

You may test the baby monitor before initial use, and at regular times thereafter.

CAUTION

- For hearing protection, make sure the parent unit is more than 1 metre away from the baby unit. If you hear any feedback, move the parent unit further until the noise stops. You can also press VOL on the parent unit to reduce the noise.

- Make sure your baby unit and parent unit are on.
- The parent unit displays images from the baby unit.
 - Speak towards the microphone of the baby unit. You will hear the sound at the parent unit.

NOTE

- When the parent unit displays and then **No Link to CAM # (# represents the baby unit number)**, and the **LINK** LED light flashes, move the parent unit closer to the baby unit (observe the minimum distance of 1 metre). You can also check if the baby unit is connected to a live power socket and switched on.

TIP

- Increase the speaker volume of the parent unit if you cannot hear the sounds transmitted from the baby unit.

Positioning the baby monitor

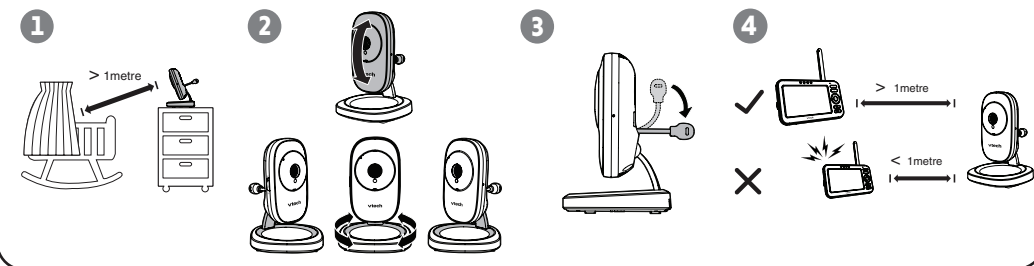
CAUTION

- Keep the baby unit out of the reach of your baby. Never place or mount the baby unit inside the baby's cot or playpen.

NOTE

- To avoid interference from other electronic devices, place your baby monitor at least 1 metre away from devices such as wireless routers, microwaves, cell phones and computers.

- Place the baby unit more than 1 metre away from your baby.
- Adjust the angle of the baby unit camera to aim at your baby.
- Bend down the temperature sensor so that it stays away from baby unit to avoid deviation of temperature detection.
- Place the parent unit more than 1 metre away from the baby unit to avoid feedback.



CAUTION

- The default volume of your parent unit is level 4, and the maximum volume is level 7. If you experience high-pitched screeching noise from your baby monitor while positioning:
 - Make sure your baby unit and parent unit are more than 1 metre apart, OR
 - Lower the volume of your parent unit.

Operating range

The operating range of the baby monitor is up to 300 metres outdoors. The actual operating range may vary depending on the environmental conditions and other interferences such as walls, doors and other obstructions.

3 USING THE BABY MONITOR

Power on or off the baby unit

- Slide the **ON/OFF** switch to **ON** to turn on the baby unit. The **ON/OFF** LED light turns on.
- Slide the **ON/OFF** switch to **OFF** to turn off the baby unit. The **ON/OFF** LED light turns off.

Power on or off the parent unit

- Press and hold **POWER** to turn on the parent unit. The screen turns on.
- Press and hold **POWER** again to turn off the parent unit. The screen turns off.

Turn on or off the parent unit screen

You can turn on or off the parent unit screen without powering off the parent unit. You can still hear sound from the baby unit.

- Press and hold **LCD ON/OFF** on the parent unit to turn off the screen.
- Press any keys on the parent unit to turn on the screen again.

Adjust speaker volume

For parent unit:

- Press **VOL +** or **VOL -** on the parent unit at any time when viewing images. As you adjust the volume, the number of solid bar shows on indicates the current volume level.

For baby unit:

The baby unit speaker volume determines the lullaby volume and talkback volume transmitted from parent unit. It can be adjusted in the parent unit.

- Press **SELECT** when the parent unit is idle.
- Press **<** or **>** to choose , then press **SELECT**.
- Press **<** or **>** to choose the desired volume level. Level 1 is the softest while Level 5 is the loudest. Then, press **SELECT** to confirm your selection.

3 USING THE BABY MONITOR (CONT'D)

Lullaby

The baby monitor has five lullabies and four soothing sounds for you to comfort your baby. You can play lullabies or soothing sounds on the baby unit by controlling remotely with the parent unit.

To play lullabies:

- Press **SELECT** when the parent unit is idle.
- Press **<** or **>** to choose **Play Lullaby**.
- Press **<** or **>** to choose **Play Melodies**, then press **SELECT**.
- Press **<** or **>** to choose a lullaby, or choose **Play All**, then press **SELECT**.
 - If **Play All** is selected, the five lullabies will be played one after the other, until all of them are played.
- When the desired lullaby is selected, press **<** or **>** to choose **Play**, then press **SELECT**.

To play soothing sounds:

- Press **SELECT** when the parent unit is idle.
- Press **<** or **>** to choose **Play Lullaby**.
- Press **<** or **>** to choose **Play Soothing Sounds**, then press **SELECT**.
- Press **<** or **>** to choose a soothing sound, then press **SELECT**.

To stop lullabies or soothing sounds:

- Press **SELECT** when the parent unit is idle.
- Press **<** or **>** to choose **Play Lullaby**.
- Press **<** or **>** to choose **Stop**, then press **SELECT**.

To set auto timer for lullabies:

While the baby unit is playing a lullaby or soothing sound, the auto timer feature automatically stops the lullaby or soothing sound after playing for 15/30/45/60 minutes. You can set auto timer for lullabies with the parent unit.

- Press **SELECT** when the parent unit is idle.
- Press **<** or **>** to choose **Play Lullaby**.
- Press **<** or **>** to choose **Auto Timer**, then press **SELECT**.
- Press **<** or **>** to choose the desired lullabies duration, then press **SELECT** to confirm your selection.

After 15/30/45/60 minutes, the lullaby or soothing sound will stop automatically.

Adjust LCD brightness

You can change the brightness of the parent unit screen from **Level 1** to **Level 5**. The LCD brightness is preset to **Level 3**.

- Press **SELECT** when the parent unit is idle.
- Press **<** or **>** to choose **Brightness**.
- Press **<** or **>** to choose the desired level of brightness.

Turn on and off the dim mode

The dim mode helps save parent unit power. Your parent unit display will dim automatically after 10 minutes of inactivity, when no keys are pressed or alerts are received from the baby unit.

NOTE

- While the screen is dimmed, any keypress or alert message will trigger the screen to return to the preset brightness level. After 10 minutes of inactivity, it will dim again.

Adjust the sound sensitivity of the baby unit

You can turn on **Sound activation** and adjust the **VOX sensitivity** to detect sounds and turn on the parent unit while its screen is switched off or dimmed.

When the baby unit detects sounds that exceed certain levels, the parent unit screen will turn on and the baby unit starts transmitting the sounds to the parent unit, and you can see and hear your baby. If you have turned on the **Night light Auto-on** and the **Projection light Auto-on** feature, they will turn on automatically to soothe your baby.

If you turn off **Sound activation**, you will hear sounds from the baby unit all the time, even when the parent unit screen is switched off.

VOX SENSITIVITY LEVEL	Level 5 (Highest)	Level 4 (High)	Level 3 (Medium)	Level 2 (Low)	Level 1 (Lowest)
DESCRIPTION	(Default setting) The parent unit screen and speaker turn on for loud babbling and louder sounds from your baby. The parent unit remains quiet when your baby sleeps soundly.	The parent unit screen and speaker turn on for loud babbling and louder sounds from your baby. The parent unit remains quiet when your baby makes soft sounds.	The parent unit screen and speaker turns on for crying and louder sounds from your baby. The parent unit remains quiet when your baby makes soft sounds.	The parent unit screen and speaker turn on for loud crying or screeching sounds from your baby. The parent unit remains quiet when your baby makes soft sounds.	The parent unit screen and speaker turn on for loud crying or screeching sounds from your baby. The parent unit remains quiet when your baby makes soft sounds.

- Press **SELECT** when the parent unit is idle.
- Press **<** or **>** to choose **VOX Sensitivity**.
- Press **<** or **>** to choose the desired sensitivity level.

TIPS

- You can adjust the baby unit placement to improve the sound detection.
- If you want to use a sound machine or white noise machine for natural white noise while using this baby monitor to check on your baby, you can:
 - Lower the volume of your sound machine or white noise machine; or
 - Lower the sensitivity level of your baby monitor to medium (level 3) or below. Default level is the highest level.

Turn on or off the sound activation

When **Sound activation** is on, the parent unit screen remains off to save power when the baby unit detects no sound.

Once the baby unit detects sounds that are louder than the chosen sound sensitivity level, the parent unit screen and speaker turn on automatically. The parent unit will then turn off again after 50 seconds of no sound detection.

- Press **SELECT** when the parent unit is idle.
- Press **<** or **>** to choose **Sound-activated Screen**.
- Press **<** or **>** to choose **On** or **Off**, then press **SELECT** to confirm your selection.

NOTES

- If you have muted the parent unit speaker, only the parent unit screen will turn on when a sound is detected.

- When the parent unit screen is off and it receives alerts, for example, link lost between parent unit and baby unit, or battery is low, the parent unit screen and speaker will turn on for 10 seconds.

Zoom

You can zoom in while viewing images from the baby unit.

- Press **Q** to zoom in.
- Press **<** or **>** to move the zoomed image downward or upward.
- Press **<** or **>** to move the zoomed image leftward or rightward.
- Press **Q** again to zoom out.

Talk

You can use the **TALK** function of the parent unit to comfort your baby.

- Press and hold **TALK** on the parent unit. The **TALK** light turns on.
- Speak towards the microphone on the parent unit. Your voice is broadcast to the baby unit.

Set alert tone

Low battery tone

You can set the parent unit to beep when the parent unit operates in low battery condition.

- Press **SELECT** when the parent unit is idle.
- Press **<** or **>** to choose **Alert settings**.
- Press **<** or **>** to choose **Low Battery Tone**, then press **SELECT**.
- Press **<** or **>** to choose **On** or **Off**, then press **SELECT** to confirm your selection.

No link alert

You can set the parent unit to beep when the link between the parent unit and the baby unit is lost.

- Press **SELECT** when the parent unit is idle.
- Press **<** or **>** to choose **Alert settings**.
- Press **<** or **>** to choose **No Link Alert**, then press **SELECT**.
- Press **<** or **>** to choose **On** or **Off**, then press **SELECT** to confirm your selection.

Monitor the temperature

Your baby unit monitors the temperature of your baby's room with its built-in temperature sensor. If the detected temperature is out of the preset temperature range, the parent unit will display an alert message.

Set temperature range

You can set the desired room temperature alert range. The minimum temperature can be set between **11 °C** and **20 °C**. The maximum temperature can be set between **21 °C** and **30 °C**.

- Press **SELECT** when the parent unit is idle.
- Press **<** or **>** to choose **Temperature**.
- Press **<** or **>** to choose **Minimum** or **Maximum**, then press **SELECT**.
- Press **<** or **>** to choose the desired minimum or maximum temperature, then press **SELECT** to confirm your selection.

Temperature alert tone

You can turn on the temperature alert tone so that the parent unit will emit an alert tone if the detected temperature is out of range.

- Press **SELECT** when the parent unit is idle.
- Press **<** or **>** to choose **Temperature**.

