

For product support please call:
01235 546810

vtech® Safe & Sound®
Myla the Monkey
Portable Soother



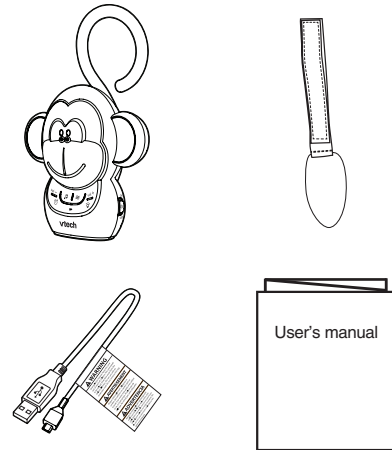
vtech®
User's manual

Congratulations

on purchasing your new VTech product. Before using this product, please read the **Important safety instructions**.

This manual has all the feature operations and troubleshooting necessary to install and operate your new VTech product. Please review this manual thoroughly to ensure proper installation and operation of this innovative and feature rich VTech product.

What's in the box



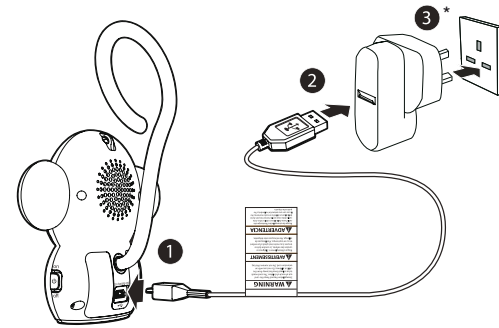
Charge the battery

This portable soother has a built-in rechargeable battery for cordless usage.

To charge the battery, connect the soother with the USB cable provided to power sources with a USB port, e.g. computers, USB power adaptors, portable chargers, etc.

NOTES

- Make sure the soother and the USB cable are out of the reach of children while charging.
- The soother battery is fully charged after 12 hours of continuous charging.
- The USB port is for charging only.



* The USB power adaptor is not provided in the package.

Position the soother

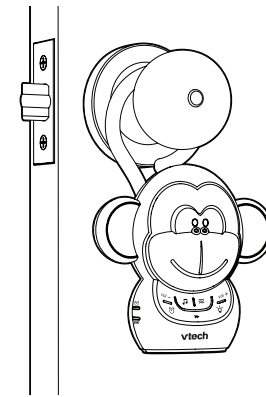
CAUTIONS

- This is not a toy. Do not let your baby play with the product.
- Keep the soother out of the reach of your baby. Never place the soother in, or attach the soother to the baby's cot or playpen.

You can use the tail on the soother or the additional strap provided to hang or attach the soother almost anywhere, e.g. pushchair handle, doorknob, nappy bag straps, etc.

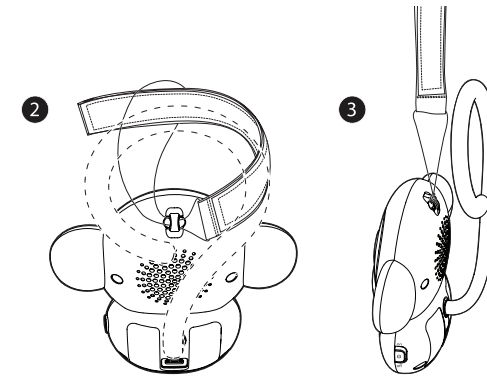
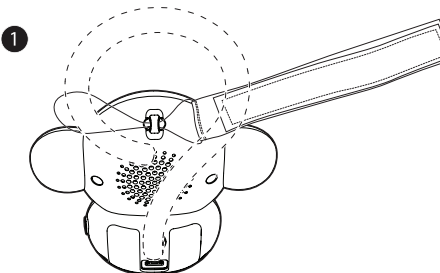
Using the tail

Use the tail to hook the soother on a desired object to keep it in position.

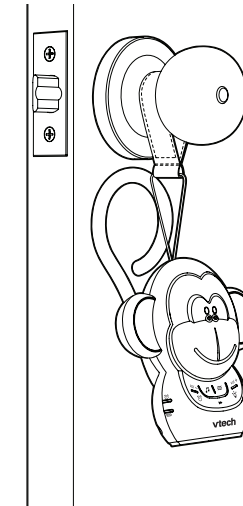


Using the additional strap

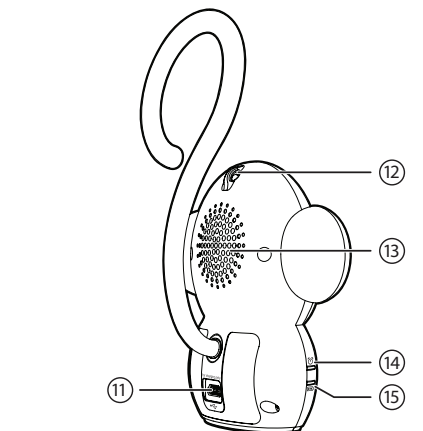
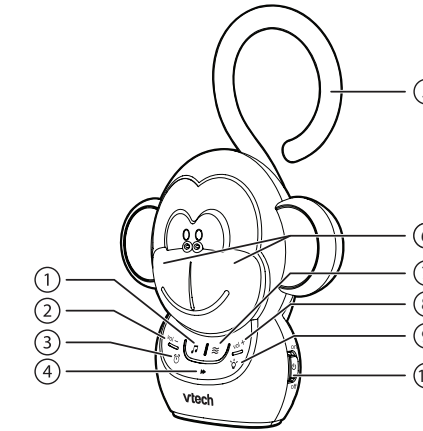
1. To attach the additional strap provided to the soother, pinch the end of the string and insert it into the slot on the top of the soother. Insert the other end of the strap through the loop on the string, then pull the strap to tighten it.



2. Wrap the two tapes of the additional strap around a desired object. Stick the tape with hooks onto the tape with loops, then press the two tapes against each other to close the loop and fix the strap.



Overview



1	🎵 Lullaby • Press to play or stop a lullaby.
2	vol- • Press to decrease the speaker volume.
3	🕒 Auto-off timer • Press to turn on a 60-minute timer while playing lullabies or soothing sounds. It will automatically stop the lullaby or soothing sound after playing for 60 minutes.

4	▶ Skip • Press to skip to the next lullaby or soothing sound.
5	Tail • Hook the soother on an object.
6	🌙 Dimmable soft-glow night light
7	🎵 Soothing sound • Press to play or stop the soothing sound.
8	vol+ • Press to increase the speaker volume.
9	🕒 Dimmable soft-glow night light • Press to turn on the night light in dim light or bright light mode.
10	🔌 on/off switch • Slide to switch the soother on or off.
11	🔌 USB port for battery charging only
12	Slot for the additional strap
13	Speaker
14	🕒 Auto-off timer light indicator • On when the auto-off timer feature is turned on. • Off when the auto-off timer feature is turned off.
15	🔌 Battery status light indicator • On when the battery is being charged. • Flashes when the battery is low and needs charging. • Off when the battery is not being charged; or the battery is fully charged.

Use the soother

Power the soother on or off

- Slide the **on/off** switch on the right-hand side of the soother to **on** or **off**.

NOTE

- Make sure the soother is on before using other features.

Play a lullaby

The soother has five lullabies for you to comfort your baby.

- Hush Little Baby*
- Brahms' Lullaby*
- Rock a Bye Baby*
- Twinkle Twinkle Little Star*
- Minuet in G, Bach*

- Press to start playing lullabies.
- Press to skip to the next lullaby.
- While a lullaby is playing, press again to stop the lullaby.

NOTES

- The soother will play the lullabies continuously unless you manually stop the lullabies or turn on the **auto-off timer** feature.
- When a lullaby ends, the soother automatically skips to the next lullaby. After the soother plays the fifth lullaby, it restarts playing from the first lullaby again.

Play a soothing sound

The soother has five soothing sounds for you to comfort your baby.

- White noise*
- Stream*
- Crickets*
- Vacuum cleaner*
- Heartbeat*

- Press to start playing soothing sounds.
- Press to skip to the next soothing sound.

- While a soothing sound is playing, press again to stop the soothing sound.

NOTES

- The soother will play the soothing sounds continuously unless you manually stop the soothing sounds or turn on the **auto-off timer** feature.
- The soother will repeat the same soothing sound again and again unless you skip to the other soothing sounds.

Adjust the speaker volume

- Press **vol-** or **vol+** at any time.

NOTE

- The soother beeps to notify you when the speaker volume is already at the highest or lowest setting while adjusting.

Turn the auto-off timer on or off

While the soother is playing a lullaby or soothing sound, the auto-off timer feature helps you automatically stop the lullabies or soothing sounds after playing for 60 minutes.

- While a lullaby or soothing sound is playing, press to turn on the auto-off timer feature.
 - The soother will start counting down 60 minutes. The auto-off timer light indicator on the left-hand side of the soother turns on.
- After 60 minutes, the soother will automatically stop any lullaby or soothing sound. The auto-off timer feature and the corresponding light indicator will turn off.

NOTES

- You can only turn on the auto-off timer feature when the soother is playing a lullaby or soothing sound.
- The auto-off timer feature will not power off the soother after the 60-minute countdown.
- You can press again to turn off the auto-off timer feature during the 60-minute countdown.
- If you manually stop the lullabies or soothing sounds while the auto-off timer is counting down, the auto-off timer will turn off.

Turn the dimmable soft-glow night light on or off

When the soother is on, press repeatedly to choose from the below night light options:

- Turn the night light on in dim light mode, or
- Turn the night light on in bright light mode, or
- Turn the night light off.

NOTE

- The night light will automatically switch off after 15 minutes.

General product care

To keep this soother working well and looking good, follow these guidelines:

- Avoid putting the soother near heating appliances and devices that generate electrical noise (for example, motors or fluorescent lamps).
- Avoid dropping the soother or treating it roughly.
- DO NOT expose the soother to direct sunlight or moisture.
- DO NOT use the soother in the rain, or handle it with wet hands.
- Clean with a soft cloth.
- DO NOT immerse the soother in water and do not clean it under the tap.
- DO NOT use cleaning spray or liquid cleaners.
- Make sure the soother is dry before you connect it to the any power sources.

Frequently asked questions

Below are the questions most frequently asked about the soother. If you cannot find the answer to your question, please contact Consumer Services on 01235 546810.

The soother does not play sounds. / The night light does not turn on.	<ul style="list-style-type: none">Make sure the soother is turned on.Make sure the battery has enough charge. Connect the soother to USB power if necessary.
Why does the Battery status light indicator flash?	The soother battery is low and needs charging. Connect the soother to USB power to charge the battery.
When I press to turn on the auto-off timer, the soother beeps. The light indicator doesn't turn on.	The auto-off timer feature is not turned on. Make sure you press when the soother is playing a lullaby or soothing sound.
Why doesn't my computer detect the soother when they are connected via USB cable?	The USB port on the soother is for charging only. It does not support data transfer.

Important safety instructions

When using your equipment, basic safety precautions should always be followed to reduce the risk of fire, electric shock and injury, including the following:

- Follow all warnings and instructions marked on the product.
- Adult setup is required.
- Do not use this product near water. For example, do not use it next to a bath tub, wash bowl, kitchen sink, laundry tub or swimming pool, or in a wet basement or shower.
- CAUTION:** Use only the batteries indicated in this manual. There may be a risk of explosion if a wrong type of battery is used for the product. Use only the supplied rechargeable battery. Do not dispose of batteries in a fire. They may explode.
- Do not place this product on an unstable table, shelf, stand or other unstable surfaces.
- This product should not be placed in any area where proper ventilation is not provided. Slots and openings in the back or bottom of this product are provided for ventilation. To protect them from overheating, these openings must not be blocked by placing the product on a soft surface such as a bed, sofa or rug. This product should never be placed near or over a radiator or heat register.
- Never push objects of any kind into this product through the slots because they may touch dangerous voltage points or create a short circuit. Never spill liquid of any kind on the product.
- To reduce the risk of electric shock, do not disassemble this product, but take it to an authorised service facility. Opening or removing parts of the product other than specified access doors may expose you to dangerous voltages or other risks. Incorrect reassembling can cause electric shock when the product is subsequently used.
- Periodically examine all components for damage.
- Children should be supervised to ensure that they do not play with the product.
- The product is not intended for use by persons (including children) with reduced physical, sensory or mental capabilities, or lack of experience and knowledge, unless they have been given supervision or instruction concerning use of the appliance by a person responsible for their safety.

SAVE THESE INSTRUCTIONS

Cautions

- Use and store the product at a temperature between 0°C and 40°C.
- Do not expose the product to extreme cold, heat or direct sunlight. Do not put the product close to a heating source.
- Make sure the product and the USB cable are always out of reach of the baby, at least 1 metre away from the baby or cot, to avoid a possible strangulation hazard.
- Never place the soother in, or attach the soother to, the baby's cot or playpen. Never cover the product with anything such as a towel or a blanket.



Customer service and product warranty

IMPORTANT

Please retain this booklet with your sales receipt as proof of the date of purchase.

Customer Service

Please call our Consumer Services Department on 01235 546810 (from UK) or +44 1235 546810 (outside UK) and a service representative will be happy to help you.



PRODUCT REGISTRATION

Visit www.vtech.co.uk/clubvtech/login to register your VTech product

By joining the VTech Club you can also enter competitions, find out about news and events, seek expert advice for parents and let your kids play fun learning games and activities.

PRODUCT WARRANTY

Thank you for choosing this quality product from VTech. We hope it will bring many hours of entertainment, imaginative play and learning.

- The product detailed above is covered by a one year warranty from the date of purchase, against any defects in materials or workmanship.
- The product may be returned to the place of purchase. Alternatively the product can be returned to VTech Electronics Europe plc (see address below), with proof of purchase, without proof of purchase no replacement will be provided.
- VTech Electronics Europe plc will examine the product and if it is found to be defective due to faulty materials or workmanship, will replace the product at their discretion.
- If the product covered by this warranty is damaged due to misuse, modification or unauthorised repair, or because of faulty batteries, battery discharge or incorrect electrical connections, then this warranty becomes void.
- This warranty is personal to the original purchaser and is not transferable.
- Breakages to the LCD screen are not covered by the warranty.
- Returns to VTech Electronics Europe plc should include a cheque or postal order for £1.50 towards the cost of return postage and packaging.
- Products returned to VTech Electronics Europe plc, should be addressed as follows and packed carefully to avoid damage in transit (Please do not include batteries or adaptor). Please include details of the fault together with your name and address.
- To keep an online record of your warranty, please register your product online at www.vtech.co.uk/warranty

Vtech Electronics EU PLC, c/o XPO Logistics, Warehouse 350, Cat & Fiddle Lane, West Hallam, DE7 6HE

THIS WARRANTY IS OFFERED AS AN EXTRA BENEFIT AND DOES NOT AFFECT CONSUMERS' STATUTORY RIGHTS.

This warranty is valid for the UK and Eire only. For products purchased outside the UK and Eire, please contact your local distributor or place of purchase.

Technical specifications

Power requirements	Built-in rechargeable 750mAh Ni-MH battery
	Charging via USB to computer or power adaptor

Disposal of batteries and product



The crossed-out wheeled bin symbols on products and batteries, or on their respective packaging, indicates they must not be disposed of in domestic waste as they contain substances that can be damaging to the environment and human health.



The chemical symbols Hg, Cd or Pb, where marked, indicate that the battery contains more than the specified value of mercury (Hg), cadmium (Cd) or lead (Pb) set out in Battery Directive (2006/66/EC).

The solid bar indicates that the product was placed on the market after 13th August, 2005.

Help protect the environment by disposing of your product or batteries responsibly.

Declaration of Conformity

This product is intended for use within Europe.

This equipment complies with the essential requirements for the Radio Equipment and Telecommunications Terminal Equipment Directive 1999/5/EC.

Vtech Telecommunications Ltd. hereby declares that this Myla the Monkey Portable Soother ST1000 is in compliance with the essential requirements and other relevant provisions of Directive 1999/5/EC.

The Declaration of Conformity for the ST1000 is available from <http://www.vtech.com/rtte-directive>.



Credits:

The *Background Noise* sound file was created by Caroline Ford, and is used under the Creative Commons license.

The *Stream Noise* sound file was created by Caroline Ford, and is used under the Creative Commons license.

The *Crickets At Night* sound file was created by Mike Koenig, and is used under the Creative Commons license.

The *20121230_vacuum_cleaner.working.01* sound file was created by dobroide, and is used under the Creative Commons license.

The *Heartbeat 5sec Int* sound file was created by Benboncan, and is used under the Creative Commons license.



Specifications are subject to change without notice.
© 2017 VTech Telecommunications Ltd.
All rights reserved. 04/17. ST1000_UK_CIB_V1