

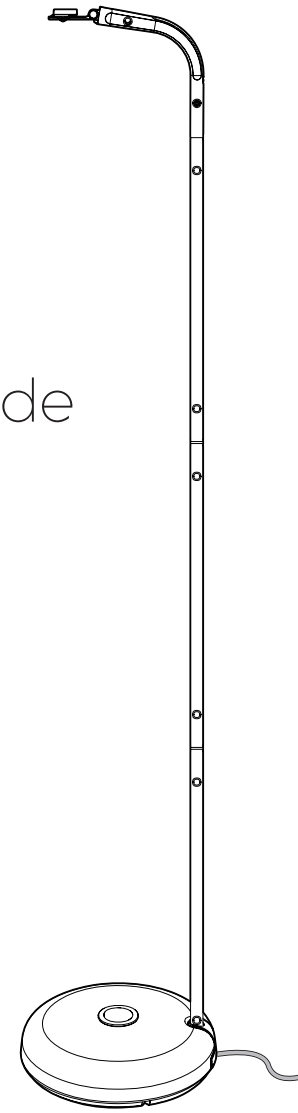
Go to [www.vtechphones.eu](http://www.vtechphones.eu) to find all compatible models for the floor stand accessory.

Universal Floor Stand

# vtech®

## Quick start guide

### VTech ClearView Over-The-Cot Universal Camera Floor Stand



## CAUTION

- Adult setup is required.
- Children should be supervised to ensure that they do not play with the product.
- The small parts of this device can be swallowed by babies or small children. Keep these parts out of reach of children.
- The product is not intended for use by persons (including children) with reduced physical, sensory or mental capabilities, or lack of experience and knowledge, unless they have been given supervision or instruction concerning use of the appliance by a person responsible for their safety.

## NOTES

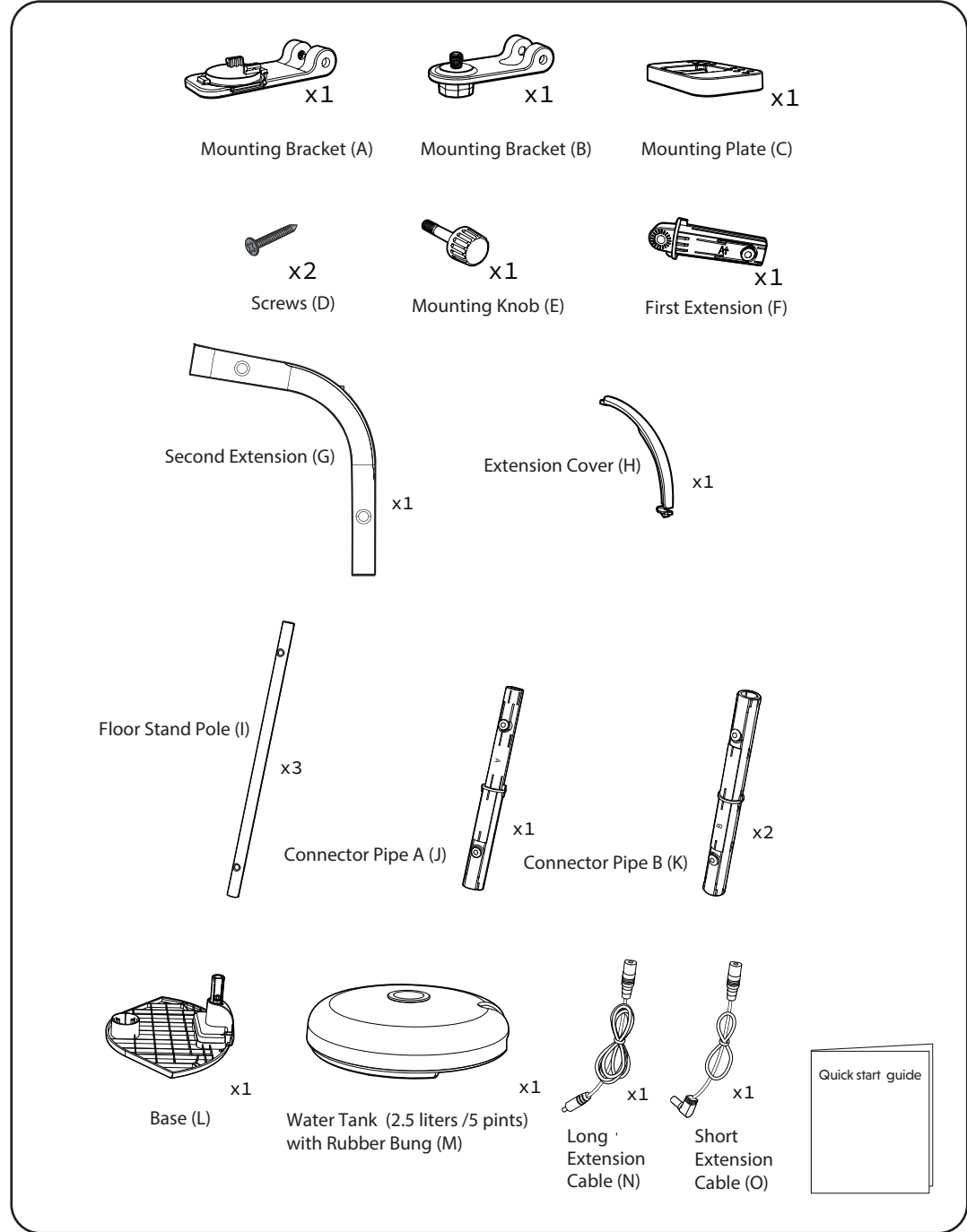
- Universal Floor Stand is an accessory for VTech baby monitors.
- For the best viewing position, please place the floor stand in the middle of the long side and next to the cot.

## Compatibility List Models:

- |            |            |
|------------|------------|
| • RM2751   | • RM5756HD |
| • VM350    | • RM5766HD |
| • VM3254   | • RM7754HD |
| • VM3258   | • RM7764HD |
| • VM4254   | • RM7766HD |
| • VM5467   | • RM7767HD |
| • VM818HD  | • RM7768HD |
| • VM819    | • RM7787HD |
| • VM901-1W | • VM7367HD |
| • VM928HD  | • VM7467   |
| • LM808-1W | • VM919HD  |
| • RM5754HD | • RM9751   |
| • RM5764HD | • RM9761   |
| • RM5755HD |            |

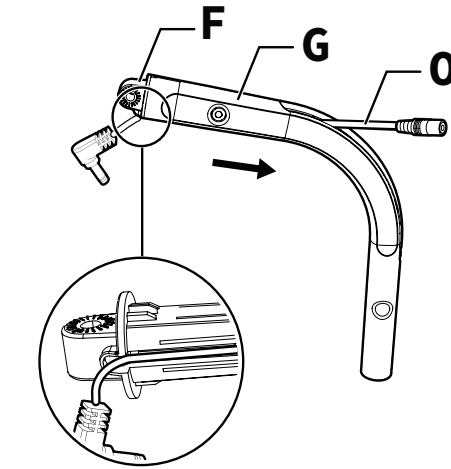
Compatible Baby monitor models are frequently added. Please check [www.vtechphones.eu](http://www.vtechphones.eu) for the full list of compatible models.

## WHAT'S IN THE BOX

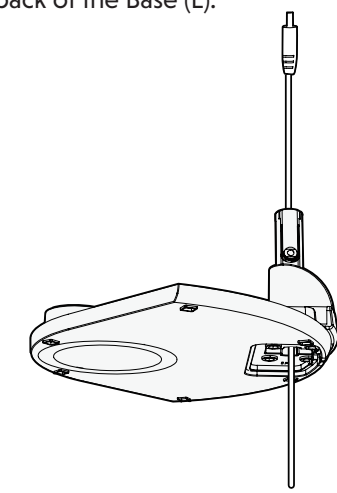


## INSTALL THE FLOOR STAND

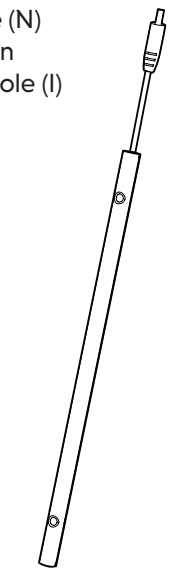
1. Insert the Short Extension Cable (O) through the slot in the First Extension (F). Insert the First Extension into the Second Extension (G) making sure the slot is aligned and First Extension fully inserted. If mounting an over -the-cot type of baby unit (e.g. RM7787HD), use First Extension (A) instead (supplied with the over-the-cot monitors).



2. Insert the plug end of the Long Extension Cable (N) through the back of the Base (L).

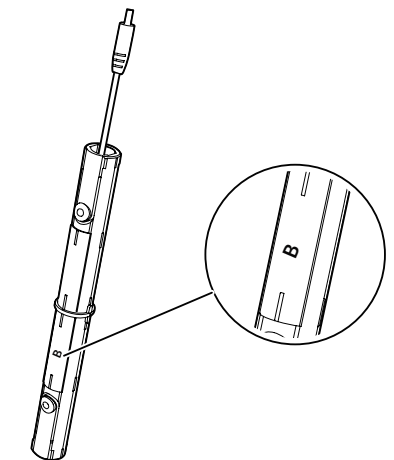


3. Select one Floor Stand Pole (I) and insert the plug end of the Long Extension Cable (N) through the pole, then insert the Mounting Pole (I) into the Base (L).

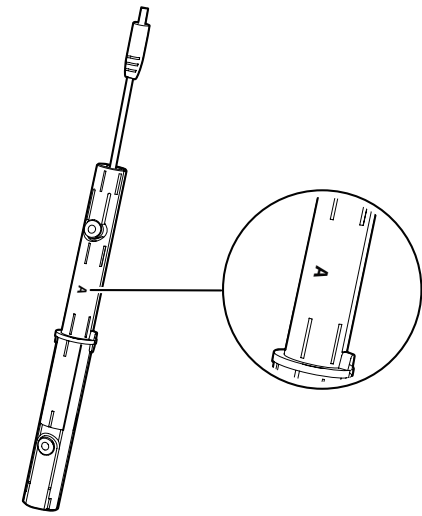


Scan QR code to watch installation video.

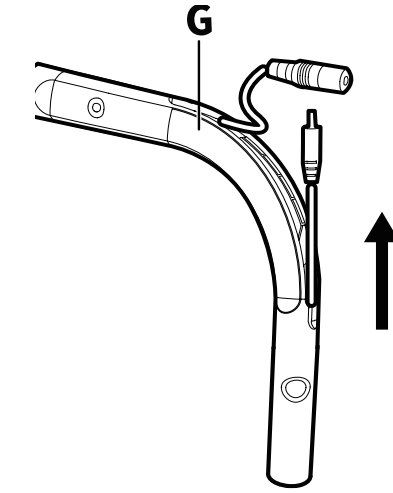
4. Insert the plug end of the Long Extension Cable (N) through a Connector Pipe B (K), a second Floor Stand Pole (I), a second Connector Pipe B (K), then the third Floor Stand Pole (I) in turn. Ensure that all slots are correctly aligned and Connector Pipes B are fully inserted into the Floor Stand Poles.



5. Insert the plug end of the Long Extension Cable (N) through the Connector Pipe A (J), then connect the pipe with the third floor stand pole (I).

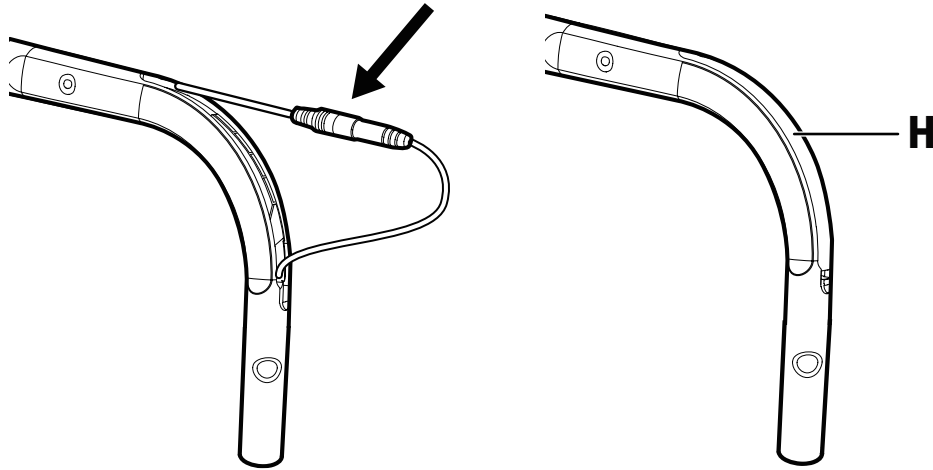


6. Insert the plug end of the Long Extension Cable (N) through the Second Extension (G), until it emerges from the opening of the Second Extension (G). Then connect the Second Extension (G) to the Connector Pipe A (J).

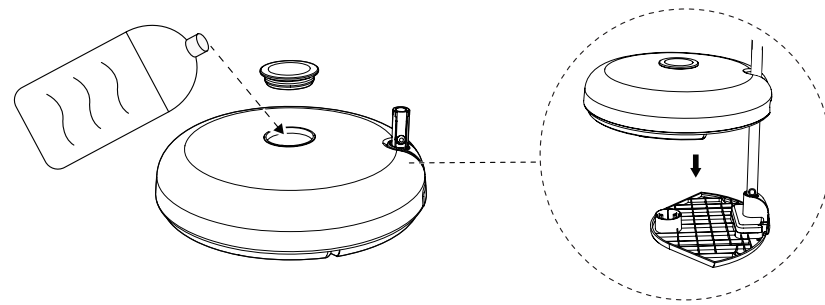


# INSTALL THE FLOOR STAND (CONT'D)

7. Insert the Extension Cable plug into the DC socket, then secure the cable with the Extension Cover (H).

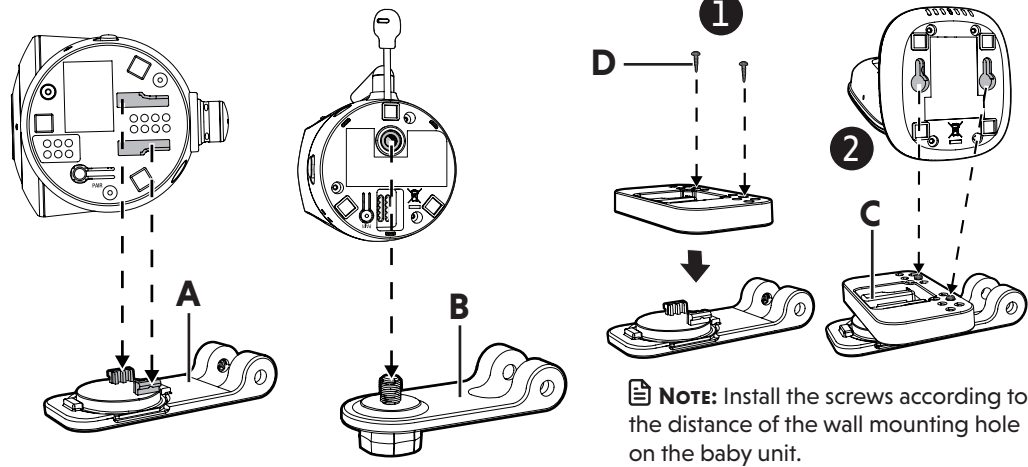


8. Carefully remove the Rubber Bung from the Water Tank (M) and fill with 2.5 litres/ 5 pints of fresh water. Replace the Rubber Bung. Then place the filled Water Tank (M) onto the Base (L) to help prevent the stand from tipping.



9. (Skip this step for over-the-cot monitors e.g. RM7787HD as these monitors do not require the Mounting Brackets supplied in this kit). Examine the wall mounting design on the underside of your Baby Unit (not included) and select the correct Mounting Bracket you require from three mounting designs used. Mounting Bracket (A) is for slots mounts, Mounting Bracket (B) for threaded hole mounts and Mounting Bracket (A) with Mounting Plate (C) is for "keyhole" type slots.

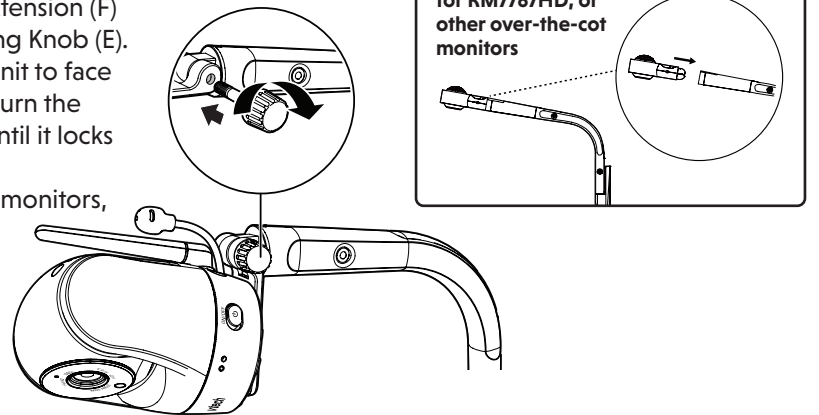
Note that for products shown in the table, identify the hole distance for your Baby Unit and insert the two Screws (D) supplied into the corresponding holes in Mounting Plate (C), leaving around 2mm screw height from fully home. We highly recommend our installation video is referred to.



Distances between screw holes	
VM5266	27.6mm (1)
VM819 /VM350 /VM3254 /VM3258 / VM4254 /LM808-1W /	33mm (2)
VM5467 /VM7367HD /VM7467	47.6mm (3)

\*Compatible Baby monitor models are frequently added. Please check [www.vtechphones.eu](http://www.vtechphones.eu) for the full list of compatible models

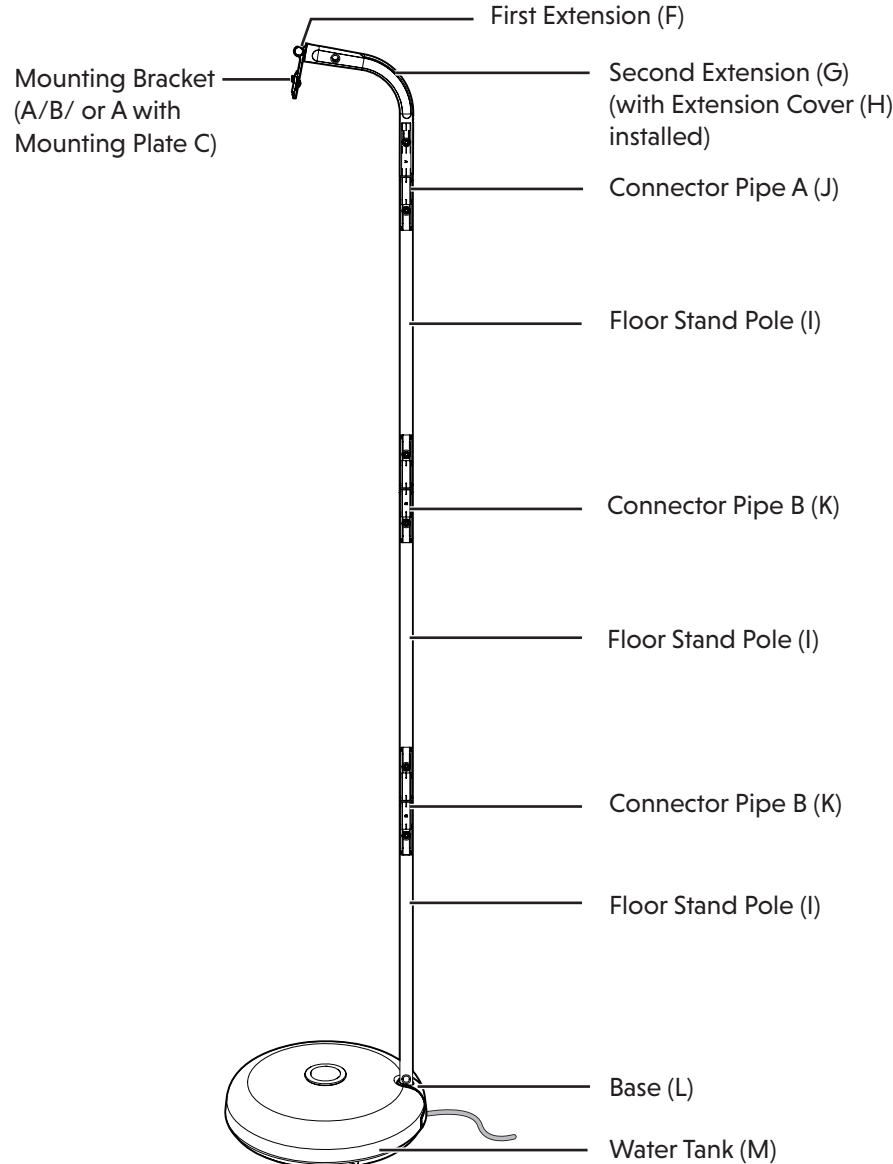
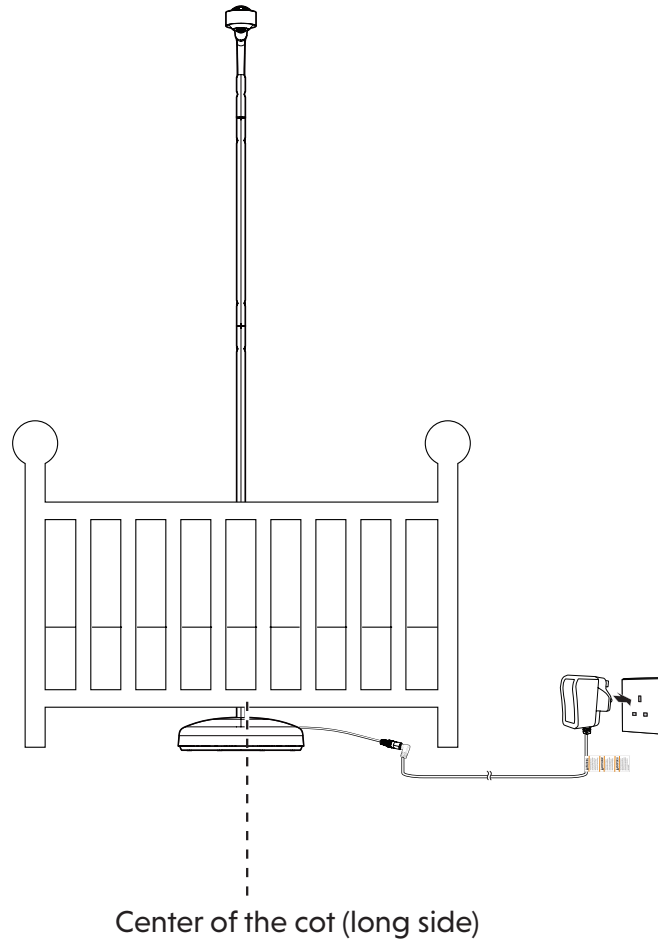
10. Attach the mounted baby unit to the First Extension (F) using the Mounting Knob (E). Adjust the baby unit to face downwards and turn the knob clockwise until it locks firmly in place (For over-the-cot monitors, e.g. RM7787HD, insert the baby unit onto the first extension (A)).



11. Connect the baby unit to the Short Extension Cable (O). Then connect the Long Extension Cable (N) to your power adaptor (not included). Power on the baby unit.

## WARNING:

The water tank included in this base is required for stability. You must fill and install the water tank before attaching the camera. Always remove the camera from the stand before removing the water tank. Failure to do so could cause the stand to become unstable, leading to the camera falling and potential damage.



Assembled Universal Floor Stand.

# CUSTOMER SERVICE AND PRODUCT WARRANTY



## PRODUCT WARRANTY

Thank you for choosing this quality product from VTech.

- The product detailed above is covered by a one year warranty from the date of purchase, against any defects in materials or workmanship.
- The product may be returned to the place of purchase.
- If the product covered by this warranty is damaged due to misuse, modification or unauthorised repair, or because of faulty batteries, battery discharge or incorrect electrical connections, then this warranty becomes void.
- This warranty is personal to the original purchaser and is not transferable.
- Breakages to the LCD screen are not covered by the warranty.
- Damage to the antenna is not covered by the warranty.

Email: [service-ukbm@vtechphones.eu](mailto:service-ukbm@vtechphones.eu)

VTech Electronics Europe Plc, c/o XPO Logistics, Warehouse 350, Cat & Fiddle Lane, West Hallam, DE7 6HE

THIS WARRANTY IS OFFERED AS AN EXTRA BENEFIT AND DOES NOT AFFECT CONSUMERS' STATUTORY RIGHTS.

This warranty is valid for the UK and Ireland only. For products purchased outside the UK and Ireland, please contact your local distributor or place of purchase.

## IMPORTANT

Please retain your sales receipt as proof of the date of purchase.

## Customer Service

Please visit [www.vtechphones.eu](http://www.vtechphones.eu) to contact our Customer Services Department.

Manufacturer: VTech Telecommunications Ltd.  
23/F., Tai Ping Industrial Centre, Block 1, 57 Ting Kok Road, Tai Po, Hong Kong.

Importer: VTech Electronics Europe Plc.  
Napier Court, Abingdon Science Park, Abingdon, Oxon, OX14 3YT.



Specifications are subject to change without notice.  
© 2025 VTech Telecommunications, Ltd.  
All rights reserved. 04/25. Universal Floor Stand\_UK\_QSG\_V1

