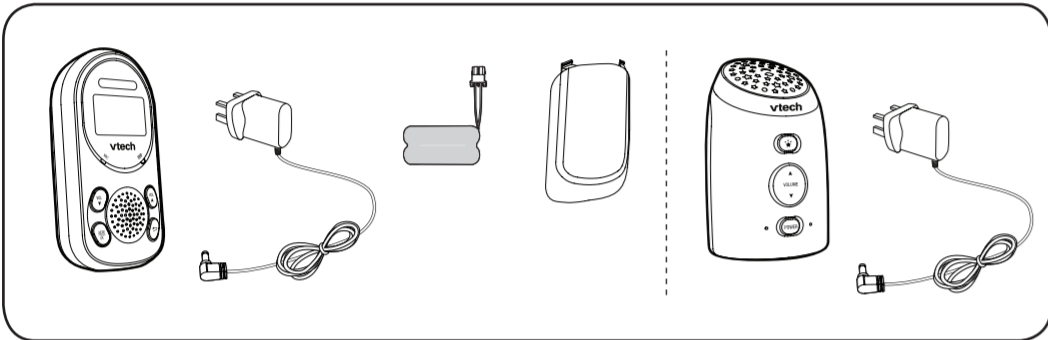


AM706-1W Digital Audio Monitor



vtech® User's manual

WHAT'S IN THE BOX



IMPORTANT SAFETY INSTRUCTIONS

- The applied nameplate is located at the bottom of the baby unit's base.
- When using your equipment, basic safety precautions should always be followed to reduce the risk of fire, electric shock and injury, including the following:
- Follow all warnings and instructions marked on the product.
 - Adult setup is required.
 - CAUTION:** Do not install the baby unit at a height above 2 metres.
 - This product is not a substitute for adult supervision of the infant. Supervising the infant is the responsibility of the parent or carer. This product could cease operating, and therefore you should not assume it will continue working properly for any given period of time. Further, this is not a medical device and should not be used as such. This product is intended to assist you in supervising your baby.
 - Do not use this product near water, for example, near to a bath, sink, swimming pool or shower.
 - CAUTION:** Use only the battery provided. There may be a risk of explosion if a wrong type of battery is used for the parent unit. The battery cannot be subjected to high or low extreme temperature and low air pressure at high altitude during use, storage or transportation. Disposal of battery into fire or a hot oven, or mechanically crushing or cutting or the battery can result in an explosion. Leaving the battery in an extremely high temperature surrounding environment can result in an explosion or the leakage of flammable liquid or gas. Battery subjected to extremely low air pressure may result in an explosion or the leakage of flammable liquid or gas. Dispose of used battery according to the instructions.
 - CAUTION:** Use only the adaptors included with this product. Incorrect adaptor polarity or voltage can seriously damage the product. Use only adaptors and battery listed below.
- Power adaptor information:**
Ten Pao Industrial Co., Ltd.
Model : S003ATB0600045 (UK)
Vtech Telecommunications Limited.
Model: VT05EEU06045 (EU), VT05EUK06045 (UK, alternative)
- Rechargeable battery information:**
Corun - Ni-MH AAA400mAh 2.4V.
Ni-MH AAA400mAh 2.4V.
- The power adaptors are intended to be correctly oriented in a vertical or floor mount position. The prongs are not designed to hold the plug in place if it is plugged into a ceiling, under-the-table or cabinet outlet.
 - For pluggable equipment, the socket-outlet should be installed near the equipment and should be easily accessible.
 - Unplug this product from the wall outlet before cleaning. Do not use liquid or aerosol cleaners. Use a damp cloth for cleaning.
 - Unplug the power cords before replacing batteries.
 - Do not cut off the power adaptors to replace them with other plugs, as this causes a hazardous situation.
 - Do not allow anything to rest on the power cords. Do not install this product where the cords may be walked on or crimped.
 - This product should be operated only from the type of power source indicated on the marking label. If you are not sure of the type of power supply in your home, consult your dealer or local power company.
 - Do not overload wall outlets or use an extension cord.
 - Do not place this product on an unstable table, shelf, stand or other unstable surfaces.
 - This product should not be placed in any area where proper ventilation is not provided. Slots and openings in the back or bottom of this product are provided for ventilation. To protect them from overheating, these openings must not be blocked by placing the product on a

- soft surface such as a bed, sofa or rug. This product should never be placed near or over a radiator or heat source.
- Never push objects of any kind into this product through the slots because they may touch dangerous voltage points or create a short circuit. Never spill liquid of any kind on the product.
 - To reduce the risk of electric shock, do not disassemble this product, but take it to an authorized service facility. Opening or removing parts of the product other than specified access doors may expose you to dangerous voltages or other risks. Incorrect reassembling can cause electric shock when the product is subsequently used.
 - You should test the sound reception every time you turn on the units or move one of the components.
 - Periodically examine all components for damage.
 - There is a very low risk of privacy loss when using certain electronic devices, such as baby monitors, cordless telephones, etc. To protect your privacy, make sure the product has never been used before purchase, reset the baby monitor periodically by powering off and then powering on the units, and power off the baby monitor if you will not use it for some time.
 - Children should be supervised to ensure that they do not play with the product.
 - The product is not intended for use by persons (including children) with reduced physical, sensory or mental capabilities, or lack of experience and knowledge, unless they have been given supervision or instruction concerning use of the appliance by a person responsible for their safety.

- SAVE THESE INSTRUCTIONS**
- Caution**
- Use and store the product at a temperature between 0°C and 40°C.
 - Do not expose the product to extreme cold, heat or direct sunlight. Do not put the product close to a heating source.
 - Batteries should not be exposed to excessive heat such as bright sunshine or fire.

- Warning—Strangulation Hazard—Children have STRANGLED in cords. Keep this cord out of the reach of children (more than 0.9 m away). Do not remove this tag.**
- Never place the baby unit inside the baby's cot or playpen. Never cover the baby unit or parent unit with anything such as a towel or a blanket.
 - Other electronic products may cause interference with your baby monitor. Try installing your baby monitor as far away from these electronic devices as possible: wireless routers, radios, cellular telephones, intercoms, room monitors, televisions, personal computers, kitchen appliances and cordless telephones.

- Precautions for users of implanted cardiac pacemakers**
Cardiac pacemakers (applies only to digital cordless devices): Wireless Technology Research, LLC (WTR), an independent research entity, led a multidisciplinary evaluation of the interference between portable wireless devices and implanted cardiac pacemakers. Supported by the U.S. Food and Drug Administration, WTR recommends to physicians that:
- Pacemaker patients**
- Should keep wireless devices at least six inches from the pacemaker.
 - Should NOT place wireless devices directly over the pacemaker, such as in a breast pocket, when it is turned ON. WTR's evaluation did not identify any risk to bystanders with pacemakers from other persons using wireless devices.
- Electromagnetic fields (EMF)**
This Vtech product complies with all standards regarding electromagnetic fields (EMF). If handled properly and according to the instructions in this user's manual, the product is safe to be used based on scientific evidence available today.

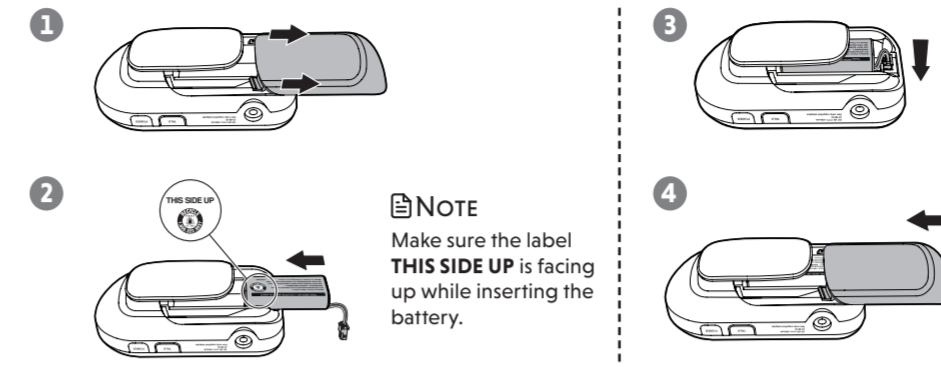
1 CONNECT AND CHARGE THE BATTERY

Install the parent unit battery

The parent unit runs on rechargeable battery or AC power. To continuously monitor your baby, keep the parent unit connected to AC power. With the battery alone, the parent unit can cordlessly run for a short time only.

NOTES

- Use only the battery supplied with this product.
- If the parent unit will not be used for a long time, disconnect and remove the battery to prevent possible leakage.



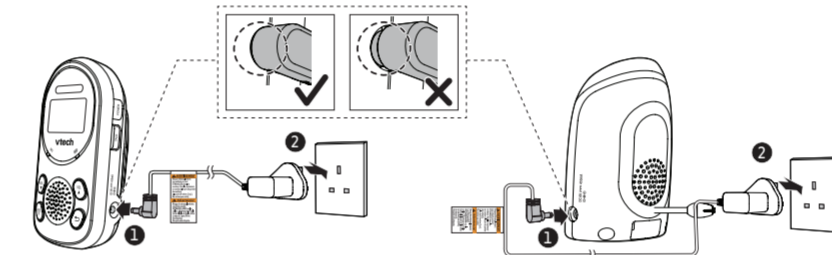
Replace the battery

To replace the battery, unplug the battery connector from the socket, and then pull the battery out of the battery compartment. Follow the steps above to install the battery.

Connect the baby monitor

NOTES

- Use only the power adaptors supplied with this product.
- Make sure the baby monitor is not connected to an electric outlet that is controlled by a switch.
- Connect the power adaptors in a vertical or floor mount position only. The adaptors' prongs are not designed to hold the weight of baby monitor, so do not connect them to any ceiling, under-the-table, or cabinet outlets. Otherwise, the adaptors may not properly connect to the outlets.
- Make sure the parent unit, the baby unit and the power adaptor cords are out of reach of children.
- With audio reminder feature preset to **ON**, the parent unit plays an audio reminder when it is connected to a baby unit.



Charge the parent unit battery

When you have connected the parent unit and installed its battery for the first time or after power outage, the parent unit powers on automatically. The battery icon indicates the battery status (see the following table).

2 BEFORE USE

NOTE

- This baby monitor should be for use by adults only.
- It is not a substitute for proper adult supervision, and should not be used as such.

Test your audio monitor

You may test the baby monitor before initial use, and at regular times thereafter.

CAUTION

- For hearing protection, make sure the parent unit is more than 2 metres away from the baby unit. If you hear any feedback, move the parent unit further until the noise stops. You can also press **VOL** on the parent unit to lower or mute the noise.

- Make sure your baby unit and parent unit are on.
- Speak towards the microphone of the baby unit. You will hear the sound at the parent unit, and see the visual sound indicators light up.

NOTE

- When the parent unit displays **NOT LINKED** and **Y** flashes, move the parent unit closer to the baby unit (observe the minimum distance of 2 metres).

TIP

- Increase the speaker volume of the parent unit if you cannot hear the sounds transmitted from the baby unit.

Positioning the baby monitor

CAUTION

- Keep the baby unit out of the reach of your baby. Never place or mount the baby unit inside the baby's cot or playpen.

- Place the baby unit more than 1 metre away from your baby.
- Place the parent unit more than 2 metres away from the baby unit.

NOTES

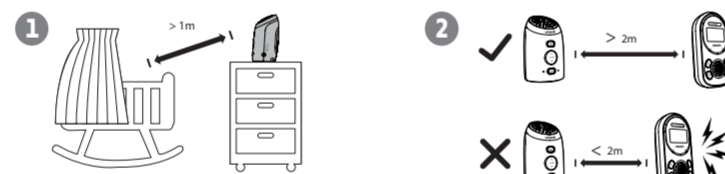
- The parent unit battery is fully charged after 11 hours of continuous charging.
- It takes longer to charge the battery when the parent unit is turned on. To shorten the charging time, turn the parent unit off while charging.
- The standby time varies depending on the sensitivity level you set, your actual use and the age of the battery.

BATTERY INDICATORS	BATTERY STATUS	ACTION
The battery icon is off.	No battery is installed but operates using AC power.	Install the parent unit battery. Charge without interruption (at least 30 minutes).
The screen displays LOW BATTERY and Y . The BATT light flashes.	The battery has very little charge and may be used for only a short time.	Charge without interruption (about 30 minutes).
The battery icon becomes solid 100% .	The battery is fully charged.	To keep the battery charged, connect it to AC power when not in use.

Specifications are subject to change without notice.
© 2021 Vtech Communications, Inc.
All rights reserved. 07/21 AM706-1W UK C1B V4



2 BEFORE USE (CONT'D)



CAUTION

- The default volume of your parent unit is level 3. If you experience feedback from your baby monitor while positioning:
 - Make sure your baby unit and parent unit are more than 2 metres apart, OR
 - Turn down the volume of your parent unit.

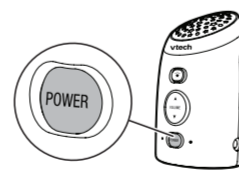
Operating range

The operating range of the baby monitor is up to 300 metres outdoors or 50 metres indoors. The actual operating range may vary depending on the environmental conditions, and other interferences such as walls, doors, and other obstructions.

3 USING THE BABY MONITOR

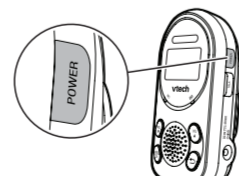
Power on or off the baby unit

- Press and hold **POWER** to power on the baby unit. The power light turns on.
- Press and hold **POWER** to power off the baby unit. The power light turns off.



Power on or off the parent unit

- Press and hold **POWER** to power on the parent unit. The screen turns on.
- Press and hold **POWER** again to power off the parent unit. The screen turns off.



NOTE

- The parent unit powers on automatically once it is connected to power socket or battery installed. The baby unit also powers on automatically once connected to power socket.

Adjust the speaker volume for baby unit

- Press **VOLUME ▲** or **VOLUME ▼** on the baby unit at any time.

NOTE

- The speaker of baby unit cannot be muted.

Adjust the speaker volume for baby unit using parent unit

The baby unit volume can also be adjusted in the parent unit.

- Press **MENU/OK** when the parent unit is not in use.
- Press **VOL ▲** or **VOL ▼** to scroll to **BABY VOLUME**, then press **MENU/OK**.

- Press **VOL ▲** or **VOL ▼** to choose the desired volume level. **VOLUME 1** is the softest while **VOLUME 5** is the loudest.
- Press **MENU/OK** to confirm your selection. The screen displays **SAVED** and you hear a confirmation tone.

Adjust the speaker volume for parent unit

You can adjust the speaker volume from **VOLUME 1** to **VOLUME 5**, or turn it off. The speaker volume is preset to **VOLUME 3**.

- Press **VOL ▲** or **VOL ▼** when the parent unit is not in use.

When the speaker volume is set to off, the screen displays **Y**.

Adjust the Voice-activated (VOX) sensitivity level of the baby unit

You can choose to hear sounds from the baby unit all the time, or to hear sounds that exceed a certain level. You can use the parent unit to adjust the microphone sensitivity of your baby unit. The higher the VOX sensitivity level, the more sensitive the baby unit is in detecting sounds for transmitting to the parent unit. The VOX sensitivity level is preset to **HIGHEST**.

VOX SENSITIVITY LEVEL	Highest	High	Medium	Low	Lowest
DESCRIPTION	The parent unit speaker is constantly on, and you will hear all sounds (including background noises) from your baby's room.	The parent unit speaker turns on for soft babbling and louder sounds from your baby. It remains quiet when your baby sleeps soundly.	The parent unit speaker turns on for loud babbling and louder sounds from your baby. It remains quiet when your baby makes soft sounds.	The parent unit speaker turns on for crying and louder sounds from your baby. It remains quiet when your baby makes soft sounds.	The parent unit speaker turns on for loud crying or screeching sounds from your baby. It remains quiet when your baby makes soft sounds.

- Press **MENU/OK** when the parent unit is not in use.
- Press **VOL ▲** or **VOL ▼** to scroll to **SENSITIVITY**, then press **MENU/OK**.
- Press **VOL ▲** or **VOL ▼** to choose the VOX sensitivity level.
- Press **MENU/OK** to confirm your selection. The screen displays **SAVED** and you hear a confirmation tone.

NOTE

- To enter the **VOX Level** menu of the parent unit, the baby unit must be turned on.

Sound alert

If you turn on the sound alert, the parent unit beeps when the baby unit detects sounds which had triggered the red light of visual sound indicator on the parent unit.

When the sound alert of the parent unit is turned on, **Y** is shown on LCD display. The sound alert is preset to **OFF**.

- Press **MENU/OK** when the parent unit is not in use.
- Press **VOL ▲** or **VOL ▼** to choose **SOUND ALERT**, then press **MENU/OK**. The screen displays **ON?** or **OFF?**
- Press **MENU/OK** to confirm your selection. The screen displays **SAVED** and you hear a confirmation tone.

NOTE

- The sound alert setting on each parent unit is independent.

Vibration alert

You can turn on the vibration alert so that the parent unit vibrates when the baby unit detects sounds which had triggered the red light of visual sound indicator on the parent unit. When the vibration alert of the parent unit is turned on, **Y** is shown on LCD display. The vibration alert is preset to **OFF**.

- Press **MENU/OK** when the parent unit is not in use.
- Press **VOL ▲** or **VOL ▼** to choose **VIBRATOR**, then press **MENU/OK**. The screen displays **ON?** or **OFF?**
- Press **MENU/OK** to confirm your selection. The screen displays **SAVED** and you hear a confirmation tone.

NOTES

- Each time you set the vibration alert to **ON**, the parent unit vibrates briefly after you press **MENU/OK**.
- The vibration alert setting on each parent unit is independent.

Lullaby

The baby monitor has five lullabies for you to comfort your baby. You can play or stop lullabies on the baby unit by controlling remotely with the parent unit.

- Press **MENU/OK** when the parent unit is not in use.
- Press **VOL ▲** or **VOL ▼** to choose **LULLABY**, then press **MENU/OK**.
- Press **VOL ▲** or **VOL ▼** to choose a lullaby, or choose **PLAY ALL**, then press **MENU/OK**. The screen displays **PLAY** or **STOP**.
- Press **MENU/OK** to confirm your selection. The screen displays **SAVED** and you hear a confirmation tone.

NOTES

- If you choose a lullaby, the selected lullaby will be played repeatedly for about 20 minutes.
- If **PLAY ALL** is selected, the five lullabies will be played one after the other, until all of them are played.
- When the lullaby is playing, the parent unit displays the name of the selected lullaby, or **PLAY ALL** on the idle screen.

Turn on or off the glow-on-ceiling night light

You can turn on the glow-on-ceiling night light on the baby unit. The baby unit projects a starry night scene onto the ceiling.

When the glow-on-ceiling night light is turned on, **Y** displays on the parent unit screen.

Turn on/off the night light using the baby unit:

- Press **Y** to turn on the night light.
- Press **Y** again to turn off the night light.

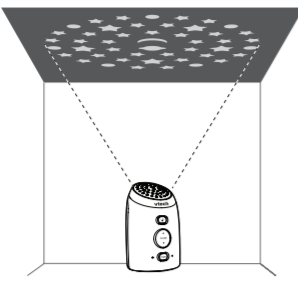
TECHNICAL SPECIFICATIONS

Frequency control	Crystal controlled PLL synthesizer
Transmit frequency	Baby unit: 1921.536-1928.448 MHz Parent unit: 1921.536-1928.448 MHz
Channels	5
LCD	35 (x) x 21.2 (y) mm B&W LCD
Nominal effective range	Actual operating range may vary according to environmental conditions at the time of use.
Power requirement	Parent unit: 2.4 V Ni-MH battery Baby unit power adaptor: Output: 6V DC 450mA Parent unit power adaptor: Output: 6V DC 450mA

3 USING THE BABY MONITOR (CONT'D)

Turn on/off the night light using the parent unit:

1. Press **MENU** when the parent unit is not in use.
2. Press **VOL** or **VOL** to choose **NIGHTLIGHT**, then press **MENU**. The screen displays **ON?** or **OFF?**
3. Press **MENU** to confirm your selection. The screen displays **SAVED** and you hear a confirmation tone.



NOTES

- The night light on baby unit operates even when the parent unit battery is out of charge or has been turned off.
- If the parent unit lost link, the night light icon on its LCD display will disappear, regardless of the night light status.

Language

You can select a language to be used in all screen displays.

1. Press **MENU** when the parent unit is not in use.
2. Press **VOL** or **VOL** to choose **LANGUAGE**, then press **MENU**.
3. Press **VOL** or **VOL** to choose a language.
4. Press **MENU** to confirm your selection. The screen displays **SAVED** and you hear a confirmation tone.

NOTE

- The language setting on each parent unit is independent.

Temperature

Your baby unit monitors the temperature of your baby's room with its built-in temperature sensor. If the detected temperature is out of the preset temperature range, the parent unit will display an alert message.

Set temperature format:

You can choose to display the temperature in Fahrenheit (°F) or Celsius (°C).

1. Press **MENU** when the parent unit is not in use.
2. Press **VOL** or **VOL** to scroll to **TEMPERATURE**, then press **MENU**.
3. Press **VOL** or **VOL** to choose **FORMAT**, then press **MENU**. The screen colours **FAHRENHEIT?** or **CELSIUS?**
4. Press **MENU** to confirm your selection. The screen displays **SAVED** and you hear a confirmation tone.

Set temperature range:

You can set the desired room temperature alert range. The minimum temperature can be set between 10°C and 20 °C. The maximum temperature can be set between 21 °C and 30 °C.

1. Press **MENU** when the parent unit is not in use.
2. Press **VOL** or **VOL** to scroll to **TEMPERATURE**, then press **MENU**.
3. Press **VOL** or **VOL** to choose **MINIMUM** or **MAXIMUM**, then press **MENU**.
4. Press **VOL** or **VOL** to choose the desired minimum or maximum temperature.

5. Press **MENU** to confirm your selection. The screen displays **SAVED**. You hear a confirmation tone.

Set temperature alert tone

You can turn on the temperature alert tone so that the parent unit will emit an alert tone if the detected temperature is out of range.

1. Press **MENU** when the parent unit is not in use.
2. Press **VOL** or **VOL** to scroll to **TEMPERATURE**, then press **MENU**.
3. Press **VOL** or **VOL** to choose **ALERT ON/OFF**, then press **MENU**. The screen displays **ON?** or **OFF?**
4. Press **MENU** to confirm your selection. The screen displays **SAVED**. You hear a confirmation tone.

Extended ECO

You can turn on the extended ECO mode so that the radiation emitted will be lowered to the minimum, so as the operating range will be reduced to the minimum.

1. Press **MENU** when the parent unit is not in use.
2. Press **VOL** or **VOL** to scroll to **EXTENDED ECO**, then press **MENU**. The screen displays **ON?** or **OFF?**
3. Press **MENU** to confirm your selection. The screen displays **SAVED** and you hear a confirmation tone.

ECO range

You can change the setting of the ECO range. The shorter the ECO range, the lower the radiation will be emitted, so as the operating range will be reduced.

1. Press **MENU** when the parent unit is not in use.
2. Press **VOL** or **VOL** to scroll to **ECO RANGE**, then press **MENU**.
3. Press **VOL** or **VOL** to choose **AUTO**, **BIG ROOM** or **SMALL ROOM**.
4. Press **MENU** to confirm your selection. The screen displays **SAVED**. You hear a confirmation tone.

Set default

Use this feature to restore to the default settings. Restoring the default settings on one parent unit will also reset the shared settings for VOX sensitivity level of the other parent unit.

1. Press **MENU** when the parent unit is not in use.
2. Press **VOL** or **VOL** to choose **RESET**, then press **MENU**. The screen displays **CONFIRM?**
3. Press **VOL** or **VOL** to choose **YES** or **NO**.
4. Press **MENU** to confirm your selection. The screen displays **SAVED**. You hear a confirmation tone.

-OR-

Press **↩** to exit the menu. The current setting remains unchanged.

Talk to the baby unit

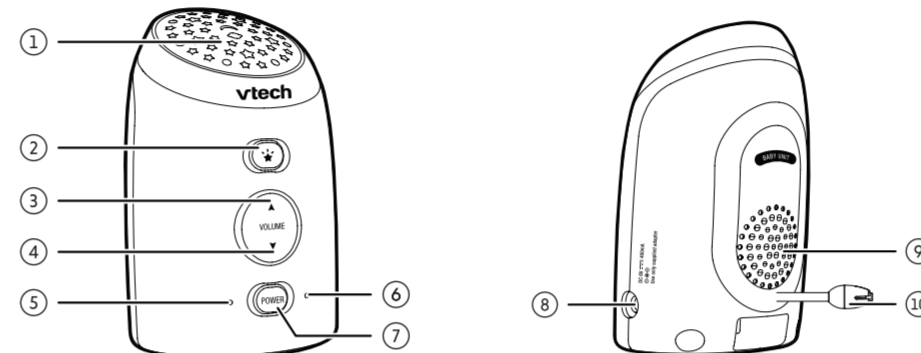
You can broadcast messages from a parent unit to the baby unit and the other parent unit.

- Press and hold **TALK** on the side of the parent unit. The screen displays **TALK** when the voice connection to the baby unit is made. Speak towards the **MIC** on the parent unit. Your voice is broadcast to the baby unit.

NOTES

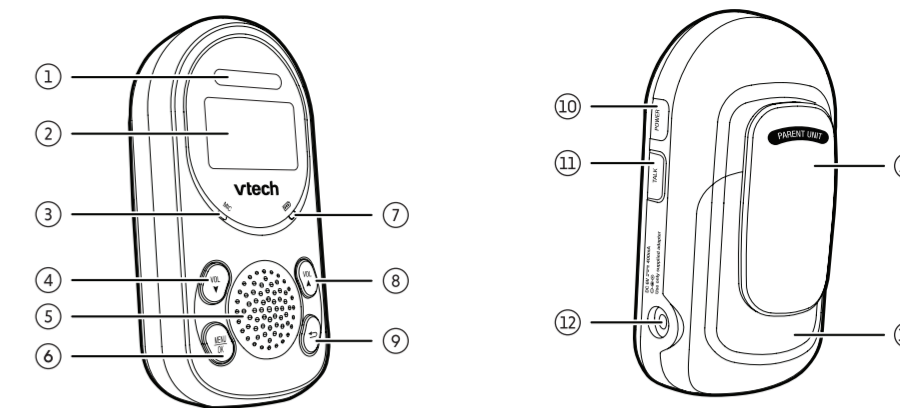
- When a parent unit is talking to the baby unit, sounds from the baby unit cannot be transmitted to the parent unit at the moment.
- If speaker volume of the parent unit has been turned off before the talk, it will change to default volume level after the talk finished.

BABY UNIT OVERVIEW



- | | |
|--|---|
| 1 Glow-on-ceiling night light | 6 Power light |
| 2 ★ | • On when the baby unit is turned on. |
| 3 VOLUME ▲ | 7 POWER |
| • Press to turn on or off the glow-on-ceiling night light. | • Press and hold to power on, and the power light turns on. |
| 4 VOLUME ▼ | • Press and hold to power off, and the power light turns off. |
| • Press to increase the speaker volume. | 8 Power jack |
| 5 Microphone | 9 Speaker |
| | 10 Temperature sensor |

PARENT UNIT OVERVIEW



- | | |
|---|---|
| 1 Visual sound indicator | 7 Battery LED |
| | • Light on when the battery is being charged. |
| The visual sound indicator shows the sound level detected by the baby unit. | • Light flashes when the battery is low and needs charging. |
| • One to three green lights indicate a moderate sound level detected by the baby unit. | • Light off when the parent unit is running on AC power without battery installed, or the parent unit is running on battery only. |
| • Additional red lights indicate a higher sound level detected by the baby unit (e.g. baby crying loudly). | 8 VOL ▲ |
| | • Press to increase the speaker volume. |
| 2 LCD display | • While in a menu, press to scroll up. |
| 3 Microphone | 9 ↩ |
| 4 VOL ▼ | • While in a menu, press to return to the previous menu. |
| • Press to decrease the speaker volume. | 10 POWER |
| • Press repeatedly until the volume reaches the minimum to turn it off. | • Press and hold to power on, the screen turns on. |
| • While in a menu, press to scroll down. | • Press and hold again to power off, the screen turns off. |
| 5 Speaker | • While in a menu, press to return to idle screen. |
| 6 MENU | 11 TALK |
| • Press to enter the menu. | • Press and hold to talk to the baby. |
| • While in a menu, press to choose an item, or save a setting. | 12 Power jack |
| | 13 Belt clip |
| | 14 Battery compartment cover |

PARENT UNIT ICONS

Status icons	Parent unit display screen messages
Connection status	LINKED
• displays when strong signal strength is detected between the baby unit and the parent unit.	• The link between the parent unit and the baby unit is established.
• displays when moderate signal strength is detected between the baby unit and the parent unit.	LOW BATTERY
• displays when the weak signal strength is detected between the baby unit and the parent unit.	• The parent unit uses only the rechargeable battery pack and it needs to be recharged.
• flashes when the link between the baby unit and the parent unit is lost.	NOT LINKED
• flashes when the link between the baby unit and the parent unit is lost.	• The link between the parent unit and the baby unit is lost continuously for over 10 seconds.
Full ECO mode	SAVED
• Displays when Full ECO Mode is turned on.	• Your selection has been saved.
Glow-on-ceiling night light	SEARCHING
• Displays when the glow-on-ceiling night light of the baby unit is on.	• The parent unit is out of range of the baby unit, or the baby unit is out of power.
Sound alert	TALK
• Displays when the sound alert of the parent unit is turned on.	• You are using the parent unit to talk to your baby.
• Flashes when there are loud sounds detected from the baby unit.	HI TEMP
Vibration alert	• The temperature detected from the selected baby unit is above the set maximum temperature.
• Displays when the vibration alert of the parent unit is turned on.	LOW TEMP
• Flashes when there are loud sounds detected from the baby unit.	• The temperature detected from the selected baby unit is below the set minimum temperature.
Mute	oF / oC
• Displays when the parent unit speaker volume is turned off.	• The real-time temperature detected by the baby unit in Fahrenheit (°F) or Celsius (°C).
Battery status	
• animates when the battery is charging.	
• displays solid when the battery is fully charged.	
• flashes when the battery is charged with AC adaptor, or charging is failed.	
• flashes when the battery is in low level and needs charging.	
• No battery icon displays when there is no battery installed.	

GENERAL PRODUCT CARE

To keep this product working well and looking good, follow these guidelines:

- Avoid placing it near heating appliances and devices that generate electrical noise (for example, motors or fluorescent lamps).
- DO NOT expose it to direct sunlight or moisture.
- Avoid dropping the product or treating it roughly.
- Clean with a soft damp cloth.
- DO NOT immerse the parent unit and the baby unit in water and do not clean them under running water.
- DO NOT use cleaning spray or liquid cleaners.
- Make sure the baby unit and parent unit are dry before you connect them to the mains again.

STORAGE

When you are not going to use the baby monitor for some time, remove the rechargeable battery from the parent unit. Store the parent unit, the baby unit and the adaptors in a cool and dry place.

FREQUENTLY ASKED QUESTIONS

Below are the questions most frequently asked about the baby monitor.

Why does the baby monitor not respond normally?	Try the following (in the order listed) for common cure: 1. Disconnect the power to the baby unit and the parent unit. 2. Remove the batteries in the parent unit. Then, install the batteries again. 3. Wait a few minutes before connecting power back to the baby unit and the parent unit. 4. Turn on the baby unit and the parent unit. 5. Wait for the parent unit to synchronize with the baby unit. Allow up to one minute for this to take place.
Why doesn't the screen of the parent unit go on when I switch on the unit?	Perhaps the rechargeable battery of the parent unit is empty and the parent unit is not connected to the power. Insert the appliance plug into the parent unit and put the adaptor in a wall socket.
Why doesn't the power light of the baby unit go on when I switch on the unit?	Perhaps the baby unit is not connected to the power. Connect the baby unit to the power.
Why does the baby monitor produce a high-pitched noise?	The units may be too close to each other. Make sure the parent unit and the baby unit are more than 2 metres away from each other.
Why does the parent unit react too quickly to other sounds?	The baby unit also detects other sounds than those of your baby. Adjust the VOX sensitivity level to a lower level or adjust the speaker volume on the parent unit.
Why don't I hear a sound/Why can't I hear my baby cry?	The volume of the parent unit may have set too low. Press VOL ▲ to increase the volume level. You may have set a low VOX sensitivity level. See Adjust the sound sensitivity of the baby unit to change the setting.
Why does the parent unit beep?	If the sound alert feature is on, there is sound detected from the baby unit. The baby unit may be out of range. Move the parent unit closer to the baby unit (but not less than 2 metres). If the parent unit is powered by the provided battery, it may not have enough charge for the parent unit to perform normally. Charge the battery in the parent unit for up to 11 hours.
Why can't I establish a connection? Why is the connection lost every now and then? Why are there sound interruptions?	The baby unit may be out of range. Move the parent unit closer to the baby unit (but not less than 2 metres). Other electronic products may cause interference with your baby monitor. Try installing your baby monitor as far away from these electronic devices as possible.
Why doesn't the battery icon shown on LCD display even I have properly installed the battery?	The battery may not be working. Contact our customer service to purchase a new battery.

CUSTOMER SERVICE AND PRODUCT WARRANTY



PRODUCT REGISTRATION

Visit www.vtech.co.uk/clubvtech/login to register your VTech product

By joining the VTech Club you can also enter competitions, find out about news and events, seek expert advice for parents and let your kids play fun learning games and activities.



PRODUCT WARRANTY

Thank you for choosing this quality product from VTech.

1. The product detailed above is covered by a one year warranty from the date of purchase, against any defects in materials or workmanship.
2. The product may be returned to the place of purchase. Alternatively the product can be returned to VTech Electronics Europe Plc (see address below), with proof of purchase, without proof of purchase no replacement will be provided.
3. VTech Electronics Europe Plc will examine the product and if it is found to be defective due to faulty materials or workmanship, will replace the product at their discretion.
4. If the product covered by this warranty is damaged due to misuse, modification or unauthorized repair, or because of faulty batteries, battery discharge or incorrect electrical connections, then this warranty becomes void.
5. This warranty is personal to the original purchaser and is not transferable.
6. Breakages to the LCD screen are not covered by the warranty.
7. Products returned to VTech Electronics Europe Plc, should be sent to the address shown below and packed carefully to avoid damage in transit. Please do not include batteries or adaptors. Please include details of the fault together with your name and address, contact phone number and/or email address.
8. To keep an online record of your warranty, please register your product online at www.vtech.co.uk/clubvtech

VTech Electronics Europe Plc, c/o XPO Logistics, Warehouse 350, Cat & Fiddle Lane, West Hallam, DE7 6HE
THIS WARRANTY IS OFFERED AS AN EXTRA BENEFIT AND DOES NOT AFFECT CONSUMERS' STATUTORY RIGHTS.

This warranty is valid for the UK and Ireland only. For products purchased outside the UK and Ireland, please contact your local distributor or place of purchase.

IMPORTANT

Please retain this booklet with your sales receipt as proof of the date of purchase.

Customer Service

Please call our Consumer Services Department on 03306 780149 (from UK) or +44 3306 780149 (outside UK) and a service representative will be happy to help you.

DISPOSAL OF BATTERIES AND PRODUCT



The crossed-out wheellie bin symbols on products and batteries, or on their respective packaging, indicates they must not be disposed of in domestic waste as they contain substances that can be damaging to the environment and human health.

The chemical symbols Hg, Cd or Pb, where marked, indicate that the battery contains more than the specified value of mercury (Hg), cadmium (Cd) or lead (Pb) set out in Battery Directive (2006/66/EC).

The solid bar indicates that the product was placed on the market after 13th August, 2005.

Help protect the environment by disposing of your product or batteries responsibly.



DECLARATION OF CONFORMITY

This product is intended for use within Europe and UK. This equipment complies with the essential requirements to EU's Radio Equipment Directive (2014/53/EU) and the UK's Radio Regulations 2017 on radio systems and telecommunication equipment. VTech Telecommunications Ltd. hereby declares that this Audio Monitor AM706-1W is in compliance with the essential requirements and other relevant provisions of EU's Radio Equipment Directive (2014/53/EU) and UK's Radio Equipment Regulations 2017. The Declaration of Conformity for the AM706-1W is available from www.vtechbabycare.com.



Manufacturer: VTech Telecommunications Ltd.
23/F., Tai Ping Industrial Centre, Block 1, 57 Ting kok Road, Tai Po, Hong Kong.
Importer: VTech Electronics Europe Plc
Napier Court, Abingdon Science Park, Abingdon, Oxon, OX14 3YT, U.K.