

VM923

2.8" Pan & Tilt Video Baby Monitor



vtech®

Quick start guide

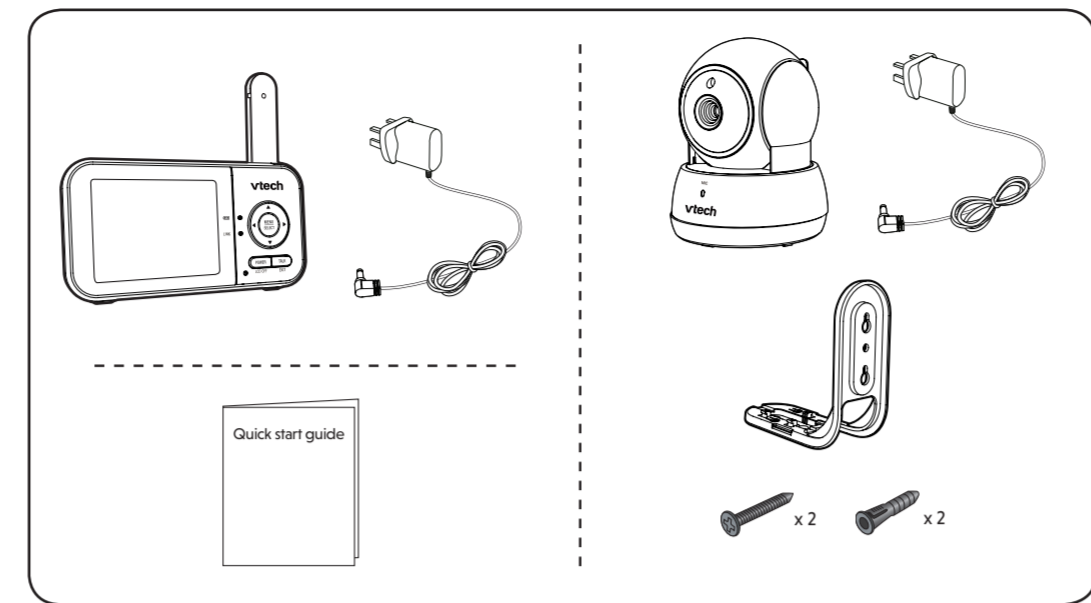
Technical specifications table with columns for LCD, Channels, Transmitt frequency, and Power requirements.

TECHNICAL SPECIFICATIONS

IMPORTANT SAFETY INSTRUCTIONS

- Follow all warnings and instructions marked on the product.
- Adult setup is required.
- CAUTION:** Do not install the baby unit at a height above 2 metres.
- This product is intended as an aid. It is not a substitute for responsible and proper adult supervision and should not be used as such.
- This product is not intended for use as a medical monitor.
- Do not use this product near water, for example, near to a bath, sink, swimming pool or shower.
- CAUTION:** Use only the battery provided. There may be a risk of explosion if a wrong type of battery is used for the parent unit. The battery cannot be subjected to high or low extreme temperature and low air pressure at high altitude during use, storage or transportation. Dispose of battery in fire or a hot oven, mechanically crushing or cutting of the battery can result in an explosion. Leaving the battery in an extremely high temperature surrounding environment can result in an explosion or the leakage of flammable liquid or gas. Battery subjected to extremely low air pressure may result in an explosion or the leakage of flammable liquid or gas. Dispose of used batteries according to the information in instructions.
- Use only the power adaptors included with this product. Incorrect power adaptor polarity or voltage can seriously damage the product.

WHAT'S IN THE BOX



1 CONNECT THE BABY MONITOR

NOTES: The rechargeable battery in the parent unit is built-in. Use only the power adaptors supplied with this product. Make sure the baby monitor is not connected to a switch-controlled electric outlet. Connect the power adaptor in a vertical or floor mount position only. Batteries should not be exposed to excessive heat such as bright sunshine or fire. **Warning - Strangulation Hazard - Children have STRANGLED in cords.** Never place the baby unit(s) inside the baby's cot or playpen. Never cover the baby unit(s) or parent unit with anything such as a towel or a blanket. Other electronic products may cause interference with your baby monitor. Try installing your baby monitor as far away from these electronic devices as possible: wireless routers, radios, cellular telephones, intercoms, room monitors, televisions, personal computers, kitchen appliances and cordless telephones.

1 CONNECT THE BABY MONITOR (CONT'D)

Charge the parent unit battery
When you have connected and turned the parent unit on, the battery charges automatically.

NOTES: Before using the baby monitor for the first time, charge the parent unit battery for 12 hours. When the parent unit battery is fully charged, the battery icon becomes solid. It takes longer to charge the battery when the parent unit is turned on. To shorten the charging time, turn the parent unit off while charging. The standby time varies depending on the sensitivity level you set, your actual use and the age of the battery.

BATTERY INDICATORS	BATTERY STATUS	ACTION
The screen displays [Battery icon with 1 bar]	The battery has very little power and may only be used for a short time.	Charge without interruption (about 30 minutes).
The battery icon becomes solid [Battery icon with 4 bars]	The battery is fully charged.	To keep the battery charged, connect it to AC power when in use.

2 POWER ON OR OFF THE BABY MONITOR

1 Slide the ON/OFF switch to power on or off your baby unit. 2 Press and hold POWER to power on or off your parent unit.

3 POSITIONING THE BABY MONITOR

CAUTION
Keep the baby unit out of the reach of your baby. Never place or mount the baby unit inside the baby's cot or playpen.

1 >1m 2 3 >1m 4 ≥1m <1m

CAUTION
The default volume of your parent unit is level 3, and the maximum volume is level 5. If you experience feedback noise from your baby monitor while positioning:
- Make sure your baby unit and parent unit are more than 1 metre apart, OR
- Turn down the volume of your parent unit.

NOTE
To avoid interference from other electronic devices, place your baby monitor at least 1 metre away from devices such as wireless routers, microwaves, mobile phones and computers.

4 STATUS CHECK

Once you power on both your baby unit and parent unit, your parent unit displays images from the baby unit, and the LINK LED light turns on.

The baby unit's POWER LED light turns on.

BASIC OPERATION - PARENT UNIT

Use the menu
Press MENU to enter the menu, or save a setting. You can use the parent unit for advanced settings or operations, such as to play or stop the baby unit's lullaby or to adjust the baby unit's sound sensitivity.

While in the menu:
- Press ◀ or ▶ to scroll among the menu options.
- Press ▲ or ▼ to select an item.
- Press SELECT to confirm your selection.
- Press TALK/EXIT to exit the menu and return to live view.

Talk to your baby unit
Press and hold TALK and speak to your parent unit. Your voice is transmitted to the baby unit. When you finished talking, release TALK to hear your baby again.

Turn off the screen
Press POWER/LCD OFF to switch off the screen. You can still hear sounds from the baby unit.

TIP
Press any key on the parent unit to turn the screen on again.

Adjust parent unit speaker volume

- Press MENU when in idle mode.
- Press SELECT to choose [Speaker icon].
- Press ▲ or ▼ to select the desired volume level, then press SELECT to confirm your selection.

Zoom

- Press MENU when in idle mode.
- Press ◀ or ▶ to choose [Zoom icon].
- Press SELECT to choose [2x] (Zoom in) or [1x] (Zoom out), then press SELECT to confirm your selection.

OVERVIEW - PARENT UNIT

1 Battery LED light	5 LINK LED light	9 Power jack
2 3-level sound indicator light	6 TALK/EXIT	10 Antenna
3 Arrow Keys	7 POWER/LCD OFF	11 RESET
4 MENU/SELECT	8 Microphone	12 Speaker

OVERVIEW - BABY UNIT

1 Light sensor	7 Speaker
2 Camera	8 Antenna
3 Infrared LEDs	9 Power jack
4 Microphone	10 Slots for wall mounting
5 POWER LED light	11 PAIR/RESET key
6 ON/OFF switch	

PARENT UNIT ICONS

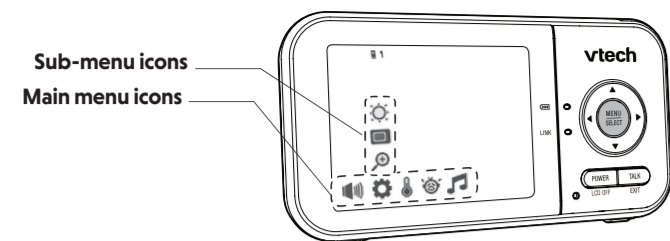
Status icons

- Connection status:** Full or Y displays when strong signal strength is detected between the baby unit and the parent unit. Yn or Y displays when moderate or low signal strength is detected between the baby unit and the parent unit.
- Current view status:** Displays the baby unit number of the baby unit being viewed.
- Zoom:** Displays when the current image on the parent unit has been zoomed in.
- Night vision:** Displays when the baby unit being viewed has activated the night vision feature.
- Talkback:** Displays when the parent unit is talking to the baby unit.
- Lullaby:** Displays when a lullaby is playing.
- Mute alert:** Displays when the parent unit speaker volume is set to zero. Displays when the parent unit is talking to the baby unit.
- Real-time temperature:** Displays the real-time temperature detected by the baby unit in Fahrenheit (°F) or Celsius (°C) (e.g. 57°F or 14°C).
- Battery status:** [Battery icon with 1 bar] animates when the battery is charging. [Solid battery icon] displays when the battery is fully charged. [Battery icon with 1 bar] displays when the battery is low and needs charging.

Main menu icons

Main menu	Sub-menu
Volume	Parent unit speaker volume - Adjust the parent unit's speaker volume.
Settings	Zoom - Zoom in and out of the video displayed from the baby unit. Screen off timer - The parent unit display will turn off to conserve energy after your chosen amount of time inactive. Brightness - Adjust the parent unit's LCD screen brightness level.
Temperature	Temperature - Turn on/off temperature alert tone. - Set the parent unit to beep whenever the room temperature detected by the baby unit falls outside of the set temperature range. - Set the minimum/maximum temperature. - Set temperature display in Fahrenheit (°F) or Celsius (°C).

PARENT UNIT ICONS (CONT'D)



Main menu icons

Main menu

Sound Detection



VOX (Voice Activated Alert) Sensitivity

- You can choose to hear sounds from the baby unit all the time, or to only hear sounds that exceed a certain level. Adjust the microphone sensitivity of your baby unit, where the higher the sensitivity level, the more sensitive the baby unit is in detecting sounds that will transmit to the parent unit. See **Sound sensitivity and sound activation** section.



OFF ON

Sound-activated screen

- When it is on, and the baby unit detects no sound, the parent unit screen stays off to save power. Once a sound is detected, the parent unit screen and speaker turns on automatically, and you can see and hear your baby. The parent unit will then turn off again after 50 seconds of no sound detection.

NOTE

- When the parent unit screen is off and it receives alerts, for example, link lost between parent unit and baby unit or battery is low, the parent unit screen and speaker will turn on for 10 seconds.

Lullaby



Lullaby volume

- Adjust the baby unit's speaker volume when playing the lullaby.



STOP 1 2 3 4

- Select one of the four melodies to play, or stop a lullaby.

Warning icons and messages



Battery low at Parent Unit

The battery is empty and needs to be recharged.



Operation is in progress.



Temperature too high

The temperature detected by the baby unit is higher than the desired temperature alert range.



Temperature too low

The temperature detected by the baby unit is lower than the desired temperature alert range.



No Link to Camera

The parent unit is searching for baby unit or the link between the baby unit and the parent unit is lost, for example, due to out of range.



The parent unit is connected to AC power.

Parent Unit Indication Lights

LINK

- On when the parent unit is linked to the baby unit.
- Flashes when the link to the baby unit being viewed is lost.



- On when the parent unit is connected to AC power, or the battery is charging.
- Flashes when the parent unit battery is low and needs charging.
- Off when the parent unit is disconnected from AC power.

SOUND SENSITIVITY AND SOUND ACTIVATION

Adjust the sound sensitivity of the baby unit

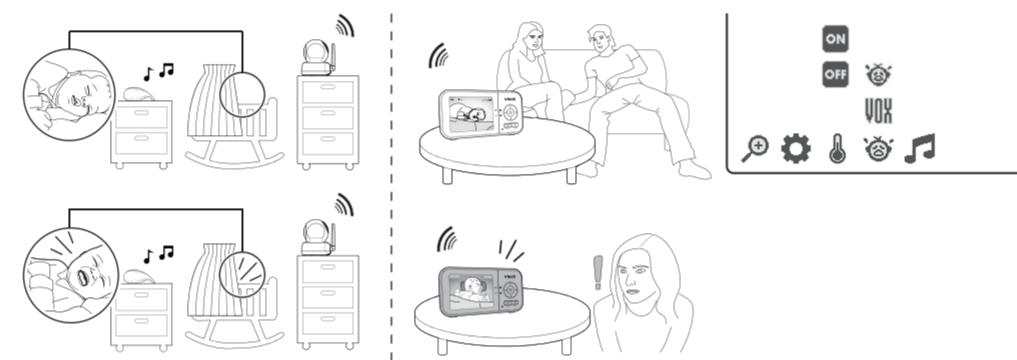
You can choose to hear sounds from the baby unit all the time, or to only hear sounds that exceed a certain level. Use the parent unit to adjust the baby unit's microphone sensitivity. The higher the sensitivity level, the more sensitive the baby unit will be in detecting sounds that transmit to the parent unit. The VOX sensitivity level is preset to the highest level.



VOX SENSITIVITY LEVEL	Highest	High	Medium	Low	Lowest
DESCRIPTION	The parent unit speaker is constantly on, and you will hear all sounds (including background noises) from your baby's room.	The parent unit speaker turns on for soft babbling and louder sounds from your baby. It remains quiet when your baby sleeps soundly.	The parent unit speaker turns on for loud babbling and louder sounds from your baby. It remains quiet when your baby makes soft sounds.	The parent unit speaker turns on for crying and louder sounds from your baby. It remains quiet when your baby makes soft sounds.	The parent unit speaker turns on for loud crying or screaming sounds from your baby. It remains quiet when your baby makes soft sounds.

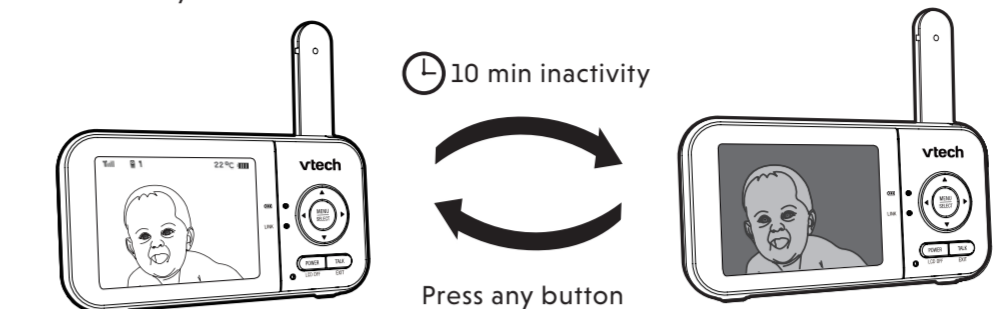
Sound activated screen

With sound activation turned on, the parent unit screen remains off to save power when the baby unit detects no sound. Once the baby unit detects sounds that are louder than the chosen sound sensitivity level, the parent unit screen turns on automatically. It will then turn off again after 50 seconds of no sound detection.



DIM MODE

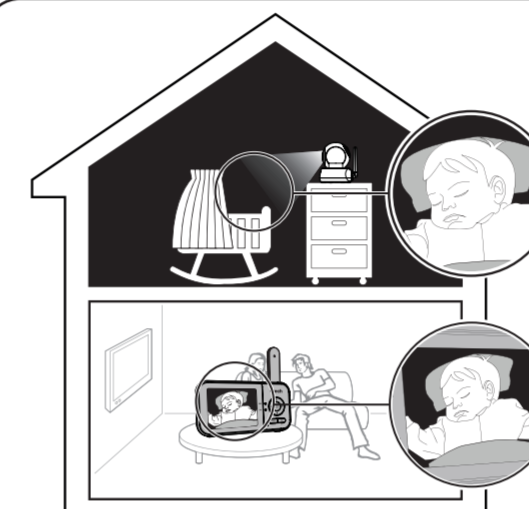
The dim mode helps save parent unit power. Your parent unit display will turn off automatically after 10 minutes of inactivity, when no keys are pressed or alerts are received from the baby unit.



NOTE

- While the screen is turned off, any keypress or alert message will trigger the screen to return to the preset brightness level. After 10 minutes of inactivity, it will resume to dim mode.

NIGHT VISION



The baby unit has infrared LEDs that allow you to see your baby clearly at night or in a dark room. When the baby unit being viewed detects low light levels, the infrared LEDs are switched on automatically. The images from the baby unit are in black and white, and appears on the screen.

NOTES

- It is normal to see a short white glare on your parent unit screen as the baby unit adapts to the dark environment.
- When the infrared LEDs are on, it is normal for the images to be in black and white.

TIP

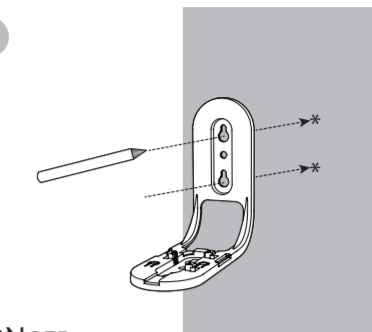
- Depending on the surrounding and other interfering factors, like lighting, objects, colours and backgrounds, the display resolution may vary. Adjust the baby unit angle or place the baby unit at a higher elevation to prevent glare and a blurry display.

MOUNT THE BABY UNIT ON DRY WALL (OPTIONAL)

NOTES

- Check for reception strength and camera angle before drilling the holes.
- The types of screws and anchors you need depend on the composition of the wall. You may need to purchase the screws and anchors separately to mount your camera unit.

1

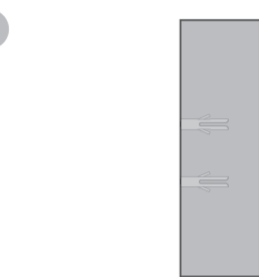


NOTE

- Check for reception strength and camera angle before drilling the holes.

Place the wall mount bracket on a wall and then use a pencil to mark two holes in parallel.

2

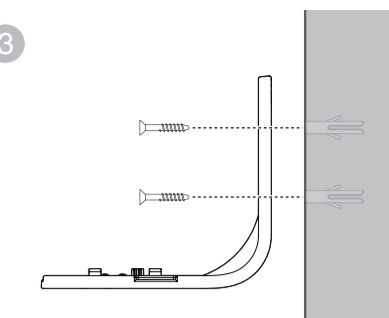


Drill two holes in the wall (5.5mm drill bit). If you drill the holes into a stud, go to step 3.

-OR-

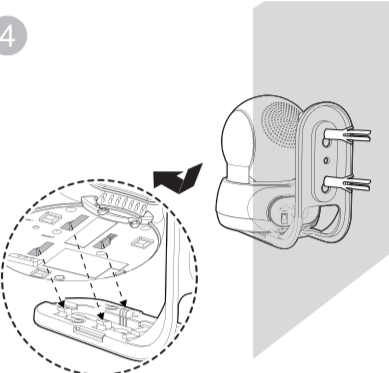
If you drill the holes into an object other than a stud, insert the wall anchors into the holes. Tap gently on the ends with a hammer until the wall anchors are flush with the wall.

3



Align the wall mount bracket and screws with the holes in the wall as shown. Tighten the screw in the middle hole first, so that the wall mount bracket position is fixed. You can tighten the other screw in the top hole.

4



Place the camera unit on the wall mount bracket, and then slide it forward until it locks into place. Connect the power adaptor to the camera unit and a power supply not controlled by a wall switch.

5



FREQUENTLY ASKED QUESTIONS

Below are the questions most frequently asked about the baby monitor.

Why does the baby monitor not respond normally?	Try the following (in the order listed) for a common cure: 1. Disconnect the power to the baby unit and the parent unit. 2. Wait a few seconds before connecting power back to the baby unit and the parent unit. 3. Turn on the baby unit and the parent unit. 4. Wait for the parent unit to synchronize with the baby unit. Allow up to one minute for this to take place.
Why doesn't the baby unit and parent unit power-on light illuminate when the units are switched on?	Perhaps the parent unit is not connected to power. Insert the appliance plug into the parent unit and insert the adaptor in a wall socket. Then, press and hold POWER to switch on the parent unit and to establish connection with the baby unit. Perhaps the baby unit is not connected to power. Insert the appliance plug into the baby unit and insert the adaptor in a wall socket. Then, slide the ON/OFF switch to ON to switch on the baby unit and to establish connection with the parent unit.
Why doesn't my parent unit charge while connected to AC power?	Make sure the power is not controlled by an electronic wall switch. You may have used the battery for a long time. See Warranty for repair/replacement.
Why is my screen in black and white?	The screen is in black and white during night-time or in a dark room when the night vision feature is activated. This is normal.
Why do I get glare or blurry display on my screen when viewing my baby at night?	During night-time or in a dark room, the surrounding and other interfering factors, like lighting, objects, colours and backgrounds may affect the image quality on your parent unit screen. Adjust the baby unit angle or place the baby unit at a higher elevation to prevent glare and a blurry display.
Why does the baby monitor produce feedback noise?	The parent unit and baby unit may be too close to each other. • Move the parent unit away from the baby unit until the noise stops; OR • Turn down the volume of your parent unit.
Why does the parent unit beep?	The baby unit may be out of range. Move the parent unit closer to the baby unit (but not less than 1 metre). The parent unit may not have enough battery for the parent unit to perform normally. Charge the battery in the parent unit until the battery icon becomes solid . The temperature of your baby's room may be too high or too low.
Why does the parent unit react too quickly to other sounds?	The baby unit also picks up other sounds than those of your baby. Adjust the VOX sensitivity level to a lower level or lower the parent unit speaker volume. See Adjust the sound sensitivity of the baby unit .
Why don't I hear a sound/Why can't I hear my baby cry?	The parent unit speaker volume may be too low. See Adjust parent unit speaker volume to increase the volume. You may have set a low VOX sensitivity level. See Adjust the sound sensitivity of the baby unit to set to a higher level.
Why can't I establish a connection? Why is the connection lost every now and then? Why are there sound interruptions?	The baby unit may be out of range. Move the parent unit closer to the baby unit (but not less than 1 metre). Other electronic products and wireless products may cause interference with your baby monitor. Try installing your baby monitor as far away from these devices as possible.

CUSTOMER SERVICE AND PRODUCT WARRANTY



PRODUCT REGISTRATION

Visit www.vtech.co.uk/clubvtech/login to register your VTech product

By joining the VTech Club you can also enter competitions, find out about news and events, seek expert advice for parents and let your kids play fun learning games and activities.



PRODUCT WARRANTY

Thank you for choosing this quality product from VTech.

- The product detailed above is covered by a one year warranty from the date of purchase, against any defects in materials or workmanship.
- The product may be returned to the place of purchase. Alternatively the product can be returned to Vtech Electronics Europe Plc (see address below), with proof of purchase, without proof of purchase no replacement will be provided.
- Vtech Electronics Europe Plc will examine the product and if it is found to be defective due to faulty materials or workmanship, will replace the product at their discretion.
- If the product covered by this warranty is damaged due to misuse, modification or unauthorized repair, or because of faulty batteries, battery discharge or incorrect electrical connections, then this warranty becomes void.
- This warranty is personal to the original purchaser and is not transferable.
- Breakages to the LCD screen are not covered by the warranty.
- Products returned to Vtech Electronics Europe Plc, should be sent to the address shown below and packed carefully to avoid damage in transit. Please do not include batteries or adaptors. Please include details of the fault together with your name and address, contact phone number and/or email address.
- To keep an online record of your warranty, please register your product online at www.vtech.co.uk/clubvtech

VTech Electronics Europe Plc, c/o XPO Logistics, Warehouse 350, Cat & Fiddle Lane, West Hattam, DE7 6HE
THIS WARRANTY IS OFFERED AS AN EXTRA BENEFIT AND DOES NOT AFFECT CONSUMERS' STATUTORY RIGHTS.

This warranty is valid for the UK and Ireland only. For products purchased outside the UK and Ireland, please contact your local distributor or place of purchase.

IMPORTANT

Please retain this booklet with your sales receipt as proof of the date of purchase.

Customer Service

Please call our Consumer Services Department on 03306 780149 (from UK) or +44 3306 780149 (outside UK) and a service representative will be happy to help you.

DECLARATION OF CONFORMITY

This product is intended for use within Europe and UK. This equipment complies with the essential requirements to EU's Radio Equipment Directive (2014/53/EU) and the UK's Radio Regulations 2017 on radio systems and telecommunication equipment.

VTech Telecommunications Ltd. hereby declares that 2.8" Pan & Tilt Video Baby Monitor VM923 is in compliance with the essential requirements and other relevant provisions of EU's Radio Equipment Directive (2014/53/EU) and UK's Radio Equipment Regulations 2017. The Declaration of Conformity for the VM923 is available from <http://www.vtech.com/rte-directive>.



DISPOSAL OF BATTERIES AND PRODUCT



The crossed-out wheeled bin symbols on products and batteries, or on their respective packaging, indicates they must not be disposed of in domestic waste as they contain substances that can be damaging to the environment and human health.



The chemical symbols Hg, Cd or Pb, where marked, indicate that the battery contains more than the specified value of mercury (Hg), cadmium (Cd) or lead (Pb) set out in Battery Directive (2006/66/EC).

The solid bar indicates that the product was placed on the market after 13th August, 2005.

Help protect the environment by disposing of your product or batteries responsibly.

Credits:

The Background Noise sound file was created by Caroline Ford, and is used under the Creative Commons license. The Stream Noise sound file was created by Caroline Ford, and is used under the Creative Commons license. The Crickets At Night sound file was created by Mike Koernig, and is used under the Creative Commons license. The Heart Beat sound file was created by Zarabadeu, and is used under the Creative Commons license.

Manufacturer: VTech Telecommunications Ltd.

23/F, Tai Ping Industrial Centre, Block 1, 57 Ting Kok Road, Tai Po, Hong Kong.

Importer: VTech Electronics Europe Plc.

Napier Court, Abingdon Science Park, Abingdon, Oxon, OX14 3YT.

GENERAL PRODUCT CARE

To keep this product working well and looking good, follow these guidelines:

- Avoid placing it near heating appliances and devices that generate electrical noise (for example, motors or fluorescent lamps).
- DO NOT expose it to direct sunlight or moisture.
- Avoid dropping the product or treating it roughly.
- Clean with a soft damp cloth.
- DO NOT immerse the parent unit and the baby unit in water and do not clean them under running water.
- DO NOT use cleaning spray or liquid cleaners.
- Make sure the baby unit and parent unit are dry before you connect them to the mains again.

STORAGE

When you are not going to use the baby monitor for some time, store the parent unit, the baby unit and the adaptors in a cool and dry place.

ADULT SUPERVISION

- This baby monitor should be for use by adults only.
- Do not place the baby unit inside the cot or playpen.
- To ensure your children's safety, do not allow them to touch or play with the baby monitor and its accessories. THIS IS NOT A TOY.