

CS2000
CS2001
CS2002
CS2003



Scan the QR code or go to
www.vtechphones.eu for
support information



vtech®

Quick Start Guide



Specifications are subject to change without notice.
©2024 VTech Telecommunications Ltd.
All rights reserved. 07/24, CS2000-CS2003_UK_GSO_V2



| Frequency control | Crystal controlled PLL synthesizer |
|-------------------------|--|
| Transmit frequency | 1.88 GHz to 1.9GHz |
| Channels | 10 |
| Nominal effective range | Actual operating range may vary according to environment conditions at the time of use. |
| Handset | NI-MH AAA 400mAh 1.2V Battery: CORUN |
| Base/Charger | VTPL: VT05EEU06045 A0HAI: A318-060045W-EU1 Input 100-240V AC 50/60Hz 0.15A, Output 6VDC 0.45A 2.7W (EU plug); VTPL: VT05EUK06045 A0HAI: A318-060045W-UK1 Input 100-240V AC 50/60Hz 0.15A, Output 6VDC 0.45A 2.7W (UK plug); |
| RF power | <250mW |

Important safety instructions

When using your telephone equipment, basic safety precautions should always be followed to reduce the risk of fire, electric shock and injury, including the following:

1. Read and understand all instructions.
2. Follow all warnings and instructions marked on the product.
3. Unplug this product from the wall outlet before cleaning. Do not use liquid or aerosol cleaners. Use a damp cloth for cleaning.
4. Do not use this product near water (for example, near a bath tub, kitchen sink, swimming pool).
5. Do not expose the telephone to direct sunlight or extreme cold environment. Do not put the telephone close to heating sources such as radiators, cookers, etc.
6. Do not overload wall outlets and extension cords as this can result in the risk of fire or electric shock.
7. Unplug this product from the wall outlet and refer servicing to VTech/distributor under the following conditions:
When the power supply cord or plug is damaged or frayed.
If the product does not operate normally by following the operating instructions.
If the product has been dropped and the cabinet has been damaged.
If the product exhibits a distinct change in performance.
8. Avoid using a telephone (other than a cordless type) during an electrical storm. There may be a remote risk of electric shock from lightning.
9. Do not use the telephone to report a gas leak in the vicinity of the leak.
10. Use only the supplied NiMH (Nickel Metal Hydride) batteries! The operation periods for the handsets are only applicable with the default battery capacities.
11. The use of other battery types or non-rechargeable batteries/primary cells can be dangerous. These may cause interference and/or unit damages. The manufacturer will not be held liable for damage arising from such non-compliance.
12. Do not use third party charging bays. The batteries may be damaged.
13. Please note the correct polarity while inserting the batteries.
14. Battery should not be exposed to excessive heat such as bright sunshine or fire and immersed in water.
15. ⚠️ Use only adaptors and battery listed below; Use only the provided external power supply: VTech Telecommunications Limited. Model: VT05EEU06045 | VT05EUK06045. Jiangxi Jian Aohai Technology Co., Ltd. Model: A318-060045W-EU1 | A318-060045W-UK1. Use only the supplied batteries: Yi Yang CORUN battery CO. LTD. Model: Ni-MH AAA 400mAh 1.2V.

Disposal of Old Equipment and Batteries (WEEE)

Only for European Union and countries with recycling systems

These symbols (a, b) on the products, packaging, and/or accompanying documents mean that used electrical and electronic products and batteries must not be mixed with general household waste. For proper treatment, recovery and recycling of old products and batteries, please take them to applicable collection points in accordance with your national legislation.

By disposing of them correctly, you will help to save valuable resources and prevent any potential negative effects on human health and the environment.



For more information about collection and recycling, please contact your local municipality. Penalties may be applicable for incorrect disposal of this waste, in accordance with national legislation.

Product disposal instructions for business users

If you wish to discard electrical and electronic equipment, please contact your dealer or supplier for further information.

Information on Disposal in other countries outside the European Union

These symbols (a, b) are only valid in the European Union. If you wish to discard these items, please contact your local authorities or dealer and ask for the correct method of disposal.

Note for the battery symbol

This symbol (b) might be used in combination with a chemical symbol. In this case it complies with the requirement set by the Directive for the chemical involved.

Recycle your device (WEEE directive 2012/19/EU)

The WEEE logo appears on the product to indicate that this product must not be disposed off or dumped with your other household wastes. You are liable to dispose of all your electronic or electrical waste equipment by relocating over to the specified collection point for recycling of such hazardous waste.

Approval and conformity

This product is intended for use within Europe and the UK. This equipment complies with the essential requirements to EU's Radio Equipment Directive (2014/53/EU) and the UK's Radio Regulations 2017 on radio systems and telecommunication equipment.

Vtech Telecommunication Ltd. hereby declares that this telephone CS2000/CS2001/2002/2003 is in compliance with the essential requirements and other relevant provisions of EU's Radio Equipment Directive (2014/53/EU) and the UK's Radio Equipment Regulations 2017.

The declaration of conformity may be viewed at www.vtechphones.eu.

The symbol confirms the conformity of the telephone and the above directive.

Importer: VTech Electronics Europe Plc.

Napier Court, Abingdon Science Park, Abingdon, Oxon, OX14 3YT.

Manufacturer: VTech Telecommunications Ltd.

23/F, Tai Ping Industrial Centre, Block 1, 57 Ting Kok Road, Tai Po, Hong Kong.

| Operating condition | Power consumption |
|----------------------|-------------------|
| Off mode | <1 W |
| Network standby mode | <1 W |

Customer Service and Product Warranty

IMPORTANT

Please retain this guide with your sales receipt as proof of the date of purchase.

Customer Service

Please call our Customer Services Department at 0330 678 1988 or email to service-ukphone@vtechphones.eu and a service representative will be happy to help you.



PRODUCT WARRANTY

Thank you for choosing this quality product from VTech.

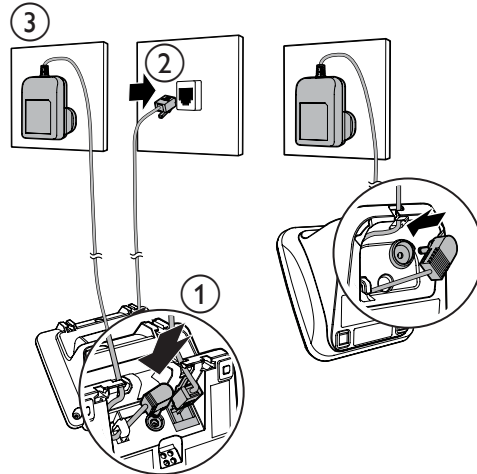
1. The product detailed above is covered by a one year warranty from the date of purchase, against any defects in materials or workmanship.
2. The product may be returned to the place of purchase.
3. If the product covered by this warranty is damaged due to misuse, modification or unauthorised repair, or because of faulty batteries, battery discharge or incorrect electrical connections, then this warranty becomes void.
4. This warranty is personal to the original purchaser and is not transferable.
5. Breakages to the LCD screen are not covered by the warranty.

VTech Electronics Europe Plc, c/o XPO Logistics, Warehouse 350, Cat & Fiddle Lane, West Hallam, DE7 6HE

THIS WARRANTY IS OFFERED AS AN EXTRA BENEFIT AND DOES NOT AFFECT CONSUMERS' STATUTORY RIGHTS.

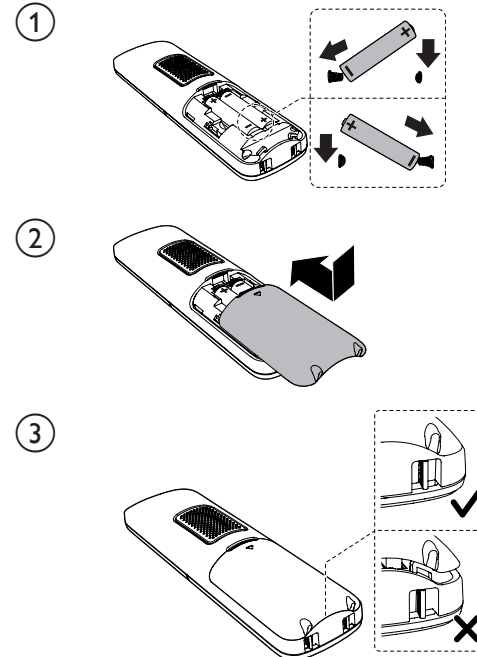
This warranty is valid for the UK and Ireland only. For products purchased outside the UK and Ireland, please contact your local distributor or place of purchase.

Connect the base / charger

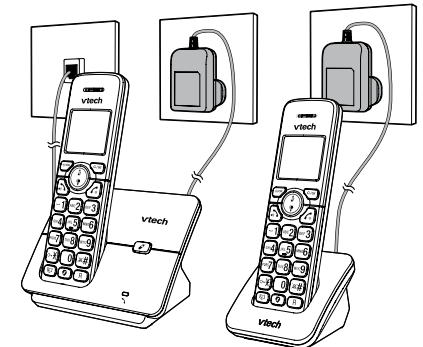


1 x charger set for CS2001
2 x charger set for CS2002
3 x charger set for CS2003

Install the battery



Charge the battery



Settings

Set language

⌂/OK → ▲/▼ → HS Settings → ⌂/OK
→ ▲/▼ → LANGUAGE → ⌂/OK
→ ▲/▼ → English | Deutsch | Français | Italiano |
Español | Nederlands → ⌂/OK

Set date or time format

⌂/OK → ▲/▼ → HS Settings → ⌂/OK → ▲/▼
→ DATE & TIME → ⌂/OK

1. → ▲/▼ → Date Format → ⌂/OK
→ ▲/▼ to select DD-MM-YY or MM-DD-YY →
⌂/OK ;
-OR-

2. → ▲/▼ → Time Format → ⌂/OK
→ ▲/▼ to select 12 HR / 24 HR → ⌂/OK

Set date & time

⌂/OK → ▲/▼ → HS Settings → ⌂/OK
→ ▲/▼ → DATE & TIME → ⌂/OK
→ ▲/▼ → Set Date or Set Time → ⌂/OK
→ Enter the date → ⌂/OK
→ Enter the time → ⌂/OK

Ringer - external calls

⌂/OK → ▲/▼ → HS Settings → ⌂/OK
→ ▲/▼ → Ring Setup → ⌂/OK
→ ▲/▼ → Ext, Ring → ⌂/OK
→ ▲/▼ to select melody → ⌂/OK

Ringer - internal calls

⌂/OK → ▲/▼ → HS Settings → ⌂/OK
→ ▲/▼ → Ring Setup → ⌂/OK
→ ▲/▼ → Int, Ring → ⌂/OK
→ ▲/▼ to select melody → ⌂/OK

Ringer - volume

⌂/OK → ▲/▼ → HS Settings → ⌂/OK
→ ▲/▼ → Ring Setup → ⌂/OK
→ ▲/▼ → Ring Volume → ⌂/OK
→ ▲/▼ to select volume → ⌂/OK

Tone - set key tone on/off

⌂/OK → ▲/▼ → HS Settings → ⌂/OK
→ ▲/▼ → Tone Setup → ⌂/OK → Key Tone →
⌂/OK → ▲/▼ to choose On or Off → ⌂/OK

Tone - set alert tones on/off

⌂/OK → ▲/▼ → HS Settings → ⌂/OK
→ ▲/▼ → Tone Setup → ⌂/OK → ▲/▼ to choose
Battery Tone or Out of Range → ⌂/OK → ▲/▼
to choose On or Off → ⌂/OK

Alarm - set alarm time and activation

⌂/OK → ▲/▼ → HS Settings → ⌂/OK
→ ▲/▼ → Alarm → ⌂/OK
→ ▲/▼ → On → ⌂/OK
→ Enter alarm time in 24 hr format → ⌂/OK
→ Display SNOOZE → ⌂/OK → ▲/▼ to select
Snooze On or Off → ⌂/OK

Set the auto answer

⌂/OK → ▲/▼ → HS Settings → ⌂/OK
→ ▲/▼ → Auto Answer → ⌂/OK
→ ▲/▼ to select On or Off → ⌂/OK

Phonebook

⌂/OK → ▲/▼ → Phonebook → ⌂/OK
→ All Contacts → ⌂/OK twice
→ Add → ⌂/OK
→ Name → ⌂/OK and enter name
→ ⌂/OK → Number → ⌂/OK and enter phone
number → ⌂/OK → Melody 1
→ ▲/▼ to select melody → ⌂/OK

Quick access keys




Call
list



Redial list



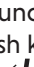
Phonebook



Call
Blocker



Recall



Mute ringer



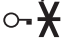
Keypad
lock



Space | 1



| Pound or
Hash key



Star
key

Nuisance and Unwanted Call Blocker

Add a call block entry

⌂/OK → ▲/▼ → Call Blocker → ⌂/OK
→ Black List → ⌂/OK
→ ⌂/OK → ADD → ⌂/OK
→ NAME → ⌂/OK and enter name
→ ⌂/OK → Number → ⌂/OK and enter phone
number → ⌂/OK

Block unknown calls

⌂/OK → ▲/▼ → Call Blocker → ⌂/OK
→ ▲/▼ → Settings → ⌂/OK
→ ▲/▼ → Call Type → ⌂/OK
→ ▲/▼ → Unavailable → ⌂/OK

Choose from the table below to block
different types of calls:-

| Block mode | Call type |
|---|--|
| <ul style="list-style-type: none">• OFF• Block feature is off. All calls ring normally. | <ul style="list-style-type: none">• WITHHELD (Withheld number) |
| <ul style="list-style-type: none">• BLOCK ALL• No ring for all calls. | <ul style="list-style-type: none">• INTERNAT'L (International number) |

| | |
|---|---|
| <ul style="list-style-type: none">• ALLOW WLIST• Ring for those numbers in the White List. | <ul style="list-style-type: none">• UNAVAILABLE (Unavailable number) |
| <ul style="list-style-type: none">• BLOCK BLIST• Ring for all calls except numbers in the Black List. | <ul style="list-style-type: none">• PAYPHONE (Payphone number) |